



SHINING STAR POWER - (From left) Shining Stars board member Arley Tree, Josephine County Parks operations head Steve Schalk, and JoCo Parks employee Tony Ruiz take a break from their work digging trenches and running conduit for a new 200-amp power service in the Mallard Loop area at Lake Selmac. The Shining Stars, Iron Horse Rodeo, Kerby Electric and PP&L donated money, resources and labor to complete the project before summer festivities. (Photo by Michelle Binker)

I-5 speed meet in GP set May 24

Oregon Transportation Commission (OTC) has established procedures and evaluation criteria for increasing interstate speed limits to 70 mph for cars and 65 mph for trucks and buses.

Oregon Dept. of Transportation (ODOT) held a public meeting in Salem to conclude round 2 of a speed limit study that began in January.

Legislation passed during the 2003 session allows ODOT to conduct engineering and traffic investigations, take public comments, and let OTC decide if speed limits should be increased.

ODOT staff has been looking at all segments of the interstate system to gather information, such as vehicle mix, accident history, problem bridges, road geometry, pavement condition, and the availability of law enforcement resources.

ODOT and the commission may consider those factors in determining the recommended speed for a particular area, as well as factors such as the proximity of emergency services, commercial trucking recommendations and restrictions, and the type and frequency of weather-related adverse road conditions.

ODOT held five meetings in February in Grants Pass, Eugene, La Grande, The Dalles and Portland to allow submittal of public comments to the Speed Zone Review Panel.

The meeting involved considering proposals to change speed limits on specific sections of the interstate.

The panel will make recommendations to OTC, which could adopt any speed limit changes during an Aug. 19 meeting.

The National Highway System Designation Act of 1995 repealed the federal maximum speed limit and allowed states to set their own limits. Oregon was the only western state, other than Hawaii and Alaska, to keep its 65 mph speed limit on rural interstate highways.

ODOT has scheduled a public meeting on Monday, May 24 at Riverside Inn and Conference Center in Grants Pass. Phone (800) 334-4567 for more information.

Lovejoy topic for session: CNA, aides

On Monday, May 10, the Lovejoy Hospice Nursing Services Team will present an hour-long informational session on the services and work of certified nursing assistants and home health aides.

Charlena Scriven, home health aide, will facilitate the noon-time "Conversations with..." meeting. It is open to everyone, and will be held from noon until 1 p.m. in the Lovejoy Hospice conference room, 939 S.E. Eighth St. behind the Riverside Convention Center in Grants Pass.

Guests are encouraged to bring their own lunch.

Beverages and a dessert will be provided. Phone (541) 474-1193 or (888) 758-8569 to register or for further information.

Support the merchants who advertise in the 'I.V. Noose'

CLOUSER Calling

Locally owned and operated in the Valley for over 25 years.

Water Wells Pump Sales Installation Service

592-6777

1470 Caves Highway

Licensed • Bonded • Insured

WWC #1504 • CCB #152266 • CFI #7-113

Member Oregon Ground Water Assoc.

Many things -- such as loving, going to sleep or behaving unaffectionately -- are done worst when we try hardest to do them.

- C.S. Lewis -

People who snore always fall asleep first.

- Unknown -

BLALOCK INSURANCE

invites you to see our new building at 328 Caves Hwy. and meet our new staff.

Watch for our new drive-up window for your payment convenience.



THE MARKET

SOUTHERN OREGON'S USED CAR & TRUCK HEADQUARTERS

\$9,999 & UNDER

1988 Toyota Camry \$9999 16676, LE, moonroof, loaded	2000 Ford Contour \$8999 16796, SE, loaded, 28,000 mi	1995 Chevrolet Caprice \$6999 16759, 4 dr, loaded, low mi.
1997 Chevrolet \$9999 P16477, LXI, coupe, auto, air, all power, leather, tilt, cd	1992 Ford F-150 \$6999 16888, S.Cab, 4x2, XLT, loaded	1995 Dodge Dakota \$7999 16747, Club Cab, loaded
1996 Toyota Extra Cab \$9999 16875, 4x2, PS, Air, 38,000 mi	1999 Ford Contour \$6999 16738, loaded	1996 Ford Taurus GL \$5999 16746, loaded
1992 Oldsmobile Royal \$2999 15659, 4 dr, auto, all power, loaded	1998 Ford Taurus \$6999 16795, SE, loaded, only 41,000 mi.	1997 GMC Jimmy \$9999 16571, 75k miles, auto, 4x4, air, all power, tilt, cruise

Mock's Used Car Center

1992 Oldsmobile Royal \$2999 15659, 4 dr, auto, all power, loaded	2002 Chevrolet Cavalier LS \$9999 P16663, 4 dr, loaded	2003 Ford Focus \$13999 FC315, SE, 4 dr, 5 spd, air, low miles
1995 Pontiac Grand Am \$4999 16923, 4 dr, loaded	2002 Ford Escort \$9999 P16678, 5 spd, alloy wheels, sharp	2001 Lincoln Town Car \$18999 16909, Signature Series, loaded
1996 Ford Taurus GL \$5999 16746, loaded	2002 Ford Taurus \$10999 P16461, SE, loaded, 24k	2003 Mercury Grand Marquis \$19999 P16869, LS, loaded
1997 Saturn \$5999 16844, SLI, 4 door, auto, ps, air	2000 Ford Mustang \$11999 P16318, coupe, 5 spd, 28k miles, air, power, tilt, cd	2001 Ford Mustang GT \$20999 P16348, convertible, auto, air, all power, leather, cd
1995 Chevrolet Caprice \$6999 16759, 4 dr, loaded, low miles	2000 Pontiac GT Grand Am \$11999 P16679, 4 dr, loaded	2003 Ford Mustang \$22999 16654, GT, 5 spd, leather, all power, tilt, cruise, cd, prem sound
1996 Ford Crown Victoria \$6999 16541, auto, air, all power, tilt, cruise	2001 Ford Taurus Wagon \$11999 P16733, loaded	2003 Ford Mustang Mach I \$23999 16825, coupe, loaded
1998 Ford Taurus \$6999 16795, SE, loaded, only 41,000 mi.	2002 Chevrolet Cavalier \$11999 P16900, LS, Sport Coupe, loaded	2002 Lincoln LS \$29999 P16557, loaded
1999 Ford Contour \$6999 16738, loaded	2003 Ford Focus \$11999 P16774, SE, 4 dr, loaded	2002 Lincoln LS \$29999 16767, loaded
2000 Ford Focus \$8999 16796, SE, loaded, 28,000 mi	2003 Ford Focus \$11999 P16775, SE, 4 dr, loaded	2003 Lincoln LS \$29999 P16870, EX, loaded
2000 Ford Focus \$8999 16801, LX, 4 dr, auto, ps, air, 17,000 mi.	2003 Ford Taurus \$12500 P16855, SE, loaded	2003 Lincoln LS \$31999 P16871, Signature Series, loaded
1997 Chrysler PT \$9999 P16477, LXI, coupe, air, all power, leather, tilt, cd	2002 Oldsmobile Alero \$12999 P16902, GL, loaded, 28k mi.	

Mock's Used Import Center

1996 Toyota Camry \$9999 16875, 4x2, PS, Air, 38,000 mi	2001 Toyota Camry \$14999 16723, 4 dr, loaded, 28k miles	1998 Lexus ES300 \$18999 P16901, ES300, 4 dr, loaded, 46 k
1998 Toyota Camry \$9999 16676, LE, moonroof, loaded	1999 Toyota Solara \$15999 P16636, S.E. coupe, loaded	2002 Nissan Frontier \$18999 16891, 4 door, Kingcab, 4x4, auto, ps, air & more
1999 Honda Civic \$10999 16719, 4 dr, loaded	2002 Toyota Tacoma \$16999 16728, 4x4, air, 8K miles	2003 Volkswagen Jetta \$18999 16896, Wolfsburg, 4dr, loaded 10,000 mi.
2001 Nissan Sentra \$10999 16890, S.E., 4 door, loaded	1999 Toyota Tacoma \$16999 16792, Limited, Xtra-cab, 4x4, loaded	1999 Honda Odyssey \$21999 16820, EX, minivan, 4 dr, loaded
1999 Nissan Quest \$11999 P16903, GXE, minivan, loaded	2001 Subaru Outback Wgn \$17999 P16866, 4x4, loaded	2001 Honda Passport \$21999 P16863, 4x4, loaded
2000 Mazda Minivan \$11999 16829, MPV, LX, loaded	1999 Toyota Sienna \$17999 P16895, minivan, XLE, loaded	2002 Nissan Xterra \$21999 P16862, 4x4, loaded
	2002 Toyota Rav 4 \$17999 16905, 4x4, 4 dr, loaded	2004 Mazda RX-8 \$32999 16897, loaded, 2000 miles

Mock's Used Truck Center

4X2s: Pickups, Mini & Passenger Vans

1988 Ford F-150 \$4988 16525, 4 spd, air, ps, am/fm, cassette, sliding rear window	2000 Ford F-150 \$12999 P16832, S.Cab, 4x4, XLT, loaded	2003 Ford Windstar \$17999 P16560, LX, minivan, auto, 7 pass, air, rear air, all power, tilt, cd
1992 Ford F-150 \$6999 16888, S.Cab, 4x2, XLT, loaded	2001 Dodge Dakota C. Cab \$14999 P16516, flatbed, 19K miles, 5 spd, air, ps, tilt, cruise	2003 Ford E-350 \$19999 P16588, passenger van, XLT, loaded
1995 Dodge Dakota \$7999 16747, Club Cab, loaded	1999 Ford F-150 \$15999 16836, S.Cab, 4x2, XLT, loaded	2003 Ford Windstar \$23999 P16872, S.E.L. loaded
1998 Plymouth Grd Voyager \$10999 P16466, SE, auto, 7 pass, air, all power, tilt, cruise	2002 Chrysler Town & Country \$16999 P16714, minivan, fully loaded	2001 Ford F-150 \$23999 P16494, XLT, SuperCrew, loaded
2000 Ford Windstar \$11999 16894, LX, loaded	2002 Ford F-250 \$17999 16879, 8 pass, SuperCab, loaded	2000 Ford Excursion \$27999 16877, Turbo Diesel, XLT, 4x2, loaded
2003 Ford Ranger \$11999 P16750, XL, 4,731 mi.	1999 Ford F-250 \$17999 P16833, S.Duty, SuperCab, 4x2, XLT, loaded	

4X4s: Pickups & Sport Utility Vehicles

1997 GMC Jimmy \$9999 16571, 75k mi, auto, 4x4, air, all power, tilt, cruise	1999 Chevrolet Tahoe \$19999 16837, 4x4, LT, 4 door, loaded	2001 Chevrolet Suburban \$24999 P16910, 4x4, LT, loaded
1999 Ford F-150 \$13999 P16904, S.Cab, 4x4, XLT, loaded, 42k	2002 Ford Ranger \$19999 P16752, S.Cab, 4x4, XLT, loaded	2001 Ford F-250 \$25999 16704, SuperCab, XLT, 4x4, 5 spd, loaded, 17k mi.
1998 Dodge Club Cab \$15999 16727, 4x4, 3/4 ton, loaded	2003 Jeep Wrangler \$19999 16771, Hard Top, 4x4, loaded 10k miles	2003 Ford Explorer Spt Trac \$25999 P16911, XLT, 4x4, loaded, 12k
2001 Ford Explorer \$16999 P16912, 4 dr, 4x4, XLT, loaded	2001 Jeep Grand Cherokee \$20999 P16861, 4x4, loaded	2001 Ford Expedition \$26999 P16737, 4x4, Eddie Bauer, loaded, white
1998 Ford F-150 \$17999 P16889, S.Cab, 4x4, XLT, loaded	2002 Ford Explorer \$20999 16892, 4x4, XLT, loaded, 28k	2000 Ford F-350 Lariat \$27999 P16821, SuperDuty, 4x4, CrewCab, loaded
2000 Dodge Durango \$17999 16841, 4x4, SLT, loaded	2002 Ford Explorer \$23999 16924, 4dr, XLT, 4x4, loaded	2000 Ford Excursion \$27999 16849, 4x4, Turbo Diesel, loaded, limited
2002 Chevrolet Blazer \$17999 16826, 4 door, 4x4, LS, loaded	2000 Ford F-150 \$21999 P16887, S.Cab, 4x4, Lariat, loaded, 38k	2000 Lincoln Navigator \$29999 16635, 4x4, loaded
1998 Dodge Ram \$18999 P16529, Club Cab, 4x4, long bed, auto, air, all power, tilt, cruise	2001 Jeep Grand Cherokee \$21999 P16864, 4x4, loaded	2003 Ford Expedition \$31999 P16777, 4x4, XLT, loaded
1999 Chevrolet Suburban \$18999 P16822, LT, 1500 Sport Utility, 4x4, loaded	2001 Ford F-150 \$21999 16895, S.Cab, 4x4, XLT, loaded	2001 Ford F-250 \$33999 P16467, SuperCab, Lariat, 4x4, diesel, auto, air, all power, leather
2001 Ford Escape \$18999 P16715, 4x4, XLT, loaded & sharp!	2003 Ford Ranger \$21999 P16751, S.Cab, 4x4, XLT, loaded	2002 Ford Excursion \$34999 P16168, 4x4, Limited, loaded
2001 Dodge Durango \$18999 P15538, SLT, 4x4, auto, air, all power, tilt, cruise, 3rd seat	1999 Ford F-350 Lariat \$22999 16893, S.Duty, S.Cab, 4x4, loaded, 26k	2003 Ford Expedition \$35999 P16773, 4x4, Eddie Bauer, TV, loaded
2001 Ford Escape \$18999 P16715, 4x4, XLT, loaded & sharp!	2002 Ford Explorer \$23999 16252, XLT, 4x4, auto, air, rear air, all power, tilt, cruise, cd	2003 Ford F-350 CrewCab \$36999 16907, 4x4, Power Stroke, Lariat, loaded
2003 Ford Ranger \$18999 P16886, 4x4, S.Cab, XLT, 5 sp,ps, air, 11k	2002 Ford F-150 \$23999 16611, SuperCab, 4x4, 19k miles, XLT, loaded	2003 Lincoln Navigator \$44999 P16355, fully loaded
	2003 Mercury Mountaineer \$23999 P16664, loaded, 4x4, 3rd seat	2003 Hummer H2 \$49999 P16778, 4x4, loaded

Mock's

no photo available gone for a test drive

2002 Chevrolet Cavalier LS
\$9999
P16663, 4 dr, loaded

1995 Pontiac Grand Am
\$4999
16923, 4 dr, loaded

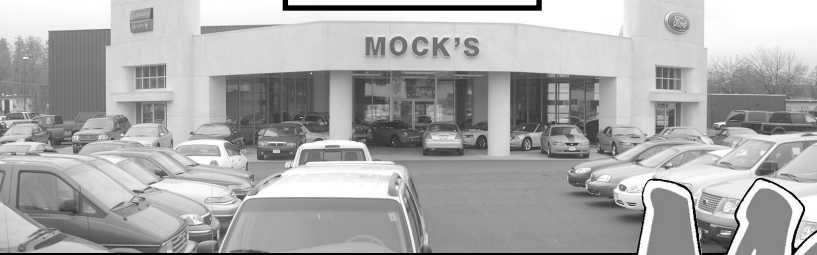
1997 Saturn
\$5999
16844, SLI, 4 door, auto, ps, air

2002 Ford Focus
\$8999
16801, LX, 4 dr, Auto, ps, air, 17,000 mi.

1988 Ford F-150
\$4988
16525, 4 spd, air, ps, am/fm, cassette, sliding rear window

1996 Ford Crown Victoria
\$6999
16541, auto, air, all power, tilt, cruise

Not one penny down on approved credit!



GRANTS PASS
913 SE 6TH STREET
476-6656

Mock's

SEE OUR USED CARS ONLINE WWW.MOCKS.COM

110 POINT INSPECTION
On Every Mock's Used Vehicle!

toll free 1-800-NEXT CAR
6398-227
MEDFORD 779-6273

The fragrance always stays in the hand that gives the rose.

- Hada Bejar -