



PACK TO THE FUTURE - Rudy Stauffer (third from left), conducted a llama packing clinic on Saturday, April 17 at Forest Edge Farm on Takilma Road. Placing a pack properly is shown above. Stauffer is a life-long mountaineer and llama packer. Forest Edge plans various programs. Watch for 'Noose' ads. (Photo by Shane Welsh)

County's jobless rate drops to 8.7%

With addition of 250 nonfarm payroll jobs during March, Josephine County's unemployment rate dropped to 8.7 percent with 29,443 persons working, said Oregon Employment Dept. (OED).

The rate during February was 9.4 percent. It was 10.2 percent during March 2003, said OED.

This March, the manufacturing sector led the way with a rise of 70 jobs. During the past year, payroll employment, said OED, has increased by 750, or an annual growth rate of 3.3 percent.

During March, several "diverse manufacturing industries added to their payrolls, combining for a net increase of 70 for the month," said OED. "Total manufacturing employment has risen by 170 since March 2003," the agency said.

It added, "With the former U.S. Forest Industries mill in Grants Pass being primed for a return to production under new ownership, further gains in the manufacturing sector are likely.

"Construction employment during March rose by 30, and has added 110 jobs during the past 12 months.

"Building permit data continues to be strong, with data from the U.S. Census Bureau showing that there were 35 single-family home permits is-

sued during February, up from 29 the same month a year ago.

"Wholesale and retail trade combined for 40 new jobs in March. During the previous 12 months, trade employment in Josephine County has increased by 250 jobs. This sector em-

ploys one in five payroll workers in the county."

Jackson County's unemployment rate last month as 7.7 percent. The seasonally adjusted rate for Oregon was 7.2 percent. For the country the adjusted rate was 5.7 percent.

'Emergency' for Biscuit timber mulled

Siskiyou National Forest officials are pondering whether to seek an emergency declaration for the Biscuit Fire area that would put logging on a fast track, according to an Associated Press report.

By using a new power granted by the Bush Administration, it's possible that an emergency could

be declared on the basis that failure to act would cost the government money, it was reported.

The move could be aimed at stopping "environmentalists" from jamming the sale of timber in legal challenges.

Timber companies are concerned that if trees are left too long in the

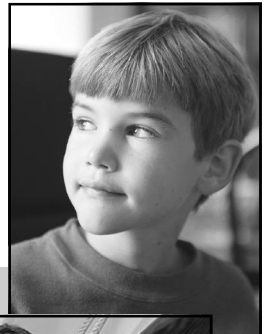
500,000-acre area of the Biscuit Fire, they will rot and be of no value. "Environmentalists" claim that the idea is a tactic to avoid the appeals process.

The Biscuit Fire in 2002 nearly caused evacuation of the entire Illinois Valley.

(See related items on page 16).

Want to look great?

Have Tony create a contemporary style to compliment your features. Tony's rates are reasonable, you don't need an appointment and he is open Monday through Saturday. That's right - even Monday! So when it's time for a good haircut, stop by Tony's. You'll ... **Look better, feel better, and do better ... with a neat Tony cut.**



TONY'S BARBER SHOP

1691 Rogue River Hwy., Grants Pass

(541) 471-0830

Monday: 8 a.m. to 4 p.m.
Tuesday - Friday: 8 a.m. to 5 p.m.
Saturday: 8 a.m. to 1 p.m.

'Where the Nicest People Meet.'



THE MARKET

SOUTHERN OREGON'S USED CAR & TRUCK HEADQUARTERS

SPECIAL PURCHASE!

We did it again!

2003 Ford Taurus SE model



Just Arrived!

These vehicles sold new with an msrp as high as \$21,500 less than a year ago! All vehicles are fully equipped and come with:

your choice **\$12,500** first come first served prior daily rental car

85 to choose from! at this price (#P16851 shown)

- automatic transmission
- power steering
- air conditioning
- power windows
- power door locks
- cruise control
- tilt steering wheel
- power seats
- alloy wheels
- much more

\$9,999 & UNDER

1992 Oldsmobile Royal \$2999 15659, 4 dr, auto, all power, loaded	1996 Ford Crown Victoria \$8999 16541, auto, air, all power, tilt, cruise	2000 Ford Contour \$8999 16796, SE, loaded, 28,000 mi
1988 Ford F-150 \$4988 16525, 4 spd, air, ps, am/fm, cassette, sliding rear window	1998 Ford Taurus \$6999 16795, SE, loaded, only 41,000 mi.	2002 Ford Escort \$8999 16828, 4 dr, auto, ps, air, fm cass
1987 Ford Bronco \$5999 16844, 4x4, XLT, loaded, 59,000 actual miles	1998 Chevrolet Malibu \$6999 16835, LS, 4 door, loaded	1988 Toyota Camry \$9999 16676, LE, moonroof, loaded
1996 Ford Taurus GL \$5999 16746, loaded	1999 Ford Contour \$6999 16738, loaded	1996 Toyota Extra Cab \$9999 16875, 4x2, PS, Air, 38,000 mi
1997 Saturn \$5999 16844, SLI, 4 door, auto, ps, air	1995 Dodge Dakota \$7999 16747, Club Cab, loaded	1997 GMC Jimmy \$9999 16571, 75k miles, auto, 4x4, air, all power, tilt, cruise
1992 Ford F-150 \$6999 16888, S.Cab, 4x2, XLT, loaded	1999 Ford Taurus \$7999 16811, GL, loaded	1997 Chrysler Sebring \$9999 P16477, LXI, coupe, auto, air, all power, leather, tilt, cd
1995 Chevrolet Caprice \$6999 16759, 4 dr, loaded, low mi.	2000 Ford Focus \$8999 16801, LX, 4 dr, Auto, ps, air, 17,000 mi.	2002 Chevrolet Cavalier LS \$9999 P16663, 4 dr, loaded
		2002 Ford Escort ZX2 \$9999 P16678, 5 spd, ps, air, alloy wheels, sharp!

Not one penny down on approved credit!



GRANTS PASS
913 SE 6TH STREET
476-6656

Mock's
SEE OUR USED CARS ONLINE WWW.MOCKS.COM

Mock's Used Car Center

1992 Oldsmobile Royal \$2999 15659, 4 dr, auto, all power, loaded	2002 Ford Focus \$8999 16828, 4 dr, air, fm cass	2003 Ford Focus \$13999 FC315, SE, 4 dr, 5 spd, air, low miles
1996 Ford Taurus GL \$5999 16746, loaded	1997 Chrysler Sebring \$9999 P16477, LXI, coupe, auto, air, all power, leather, tilt, cd	2002 Ford Mustang \$18999 P16201, convertible, auto, air, all power, tilt, cruise, cd, leather
1997 Saturn \$5999 16844, SLI, 4 door, auto, ps, air	2002 Chevrolet Cavalier LS \$9999 P16663, 4 dr, loaded	2003 Mercury Grd Marquis \$19999 P16869, LS, loaded
1995 Chevrolet Caprice \$6999 16759, 4 dr, loaded, low miles	2002 Ford Escort ZX2 \$9999 P16678, 5 spd, ps, air, alloy wheels, sharp	2001 Ford Mustang GT \$20999 P16348, convertible, auto, air, all power, leather, cd
1996 Ford Crown Victoria \$6999 16541, auto, air, all power, tilt, cruise	2000 Ford Mustang \$11999 P16318, coupe, 5 spd, 28k miles, air, all power, tilt, cd	2003 Ford Mustang \$22999 16554, GT, 5 spd, leather, all power, tilt, cruise, cd, prem sound
1998 Ford Taurus \$6999 16795, SE, loaded, only 41,000 mi.	2000 Pontiac GT Grand Am \$11999 P16679, 4 dr, loaded	2003 Ford Mustang Mach I \$23999 16825, coupe, loaded
1998 Chevrolet Malibu \$6999 16835, LS, 4 door, loaded	2001 Ford Taurus Wagon \$11999 P16733, loaded	2002 Lincoln LS \$29999 P16557, loaded
1999 Ford Contour \$6999 16738, loaded	2003 Ford Focus \$11999 P16774, SE, 4 dr, loaded	2002 Lincoln LS \$29999 16767, loaded
1999 Ford \$7999 16811, GL, loaded	2003 Ford Focus \$11999 P16775, SE, 4 dr, loaded	2003 Lincoln Town Car \$29999 P16870, Executive, loaded
2000 Ford Contour \$8999 16796, SE, loaded, 28,000 mi	2003 Ford Taurus \$12500 P16851, SE, loaded	2003 Lincoln Town Car \$31999 P16871, Signature, loaded

Mock's Used Import Center

1996 Toyota Extra Cab \$9999 16875, 4x2, PS, Air, 38,000 mi	2002 Mitsubishi Galant \$12999 P16300, ES, auto, air, all power, tilt, cruise, cd	1999 Toyota Tacoma \$16999 16792, Limited, Xtra-Cab, 4x4, loaded
1998 Toyota Camry \$9999 16676, LE, moonroof, loaded	2002 Mazda 626 \$13999 P15883, LX, 4 dr, auto, air, all power, tilt, cd	2001 Subaru Outback Wgn \$17999 P16866, 4x4, loaded
1999 Honda Accord \$10999 16719, 4 dr, loaded	2001 Toyota Camry \$14999 16723, 4 dr, loaded, 28K miles	1999 Toyota Sienna \$17999 P16992, minivan, XLE, loaded
2001 Nissan Sentra \$10999 16890, S.E., 4 door, loaded	1999 Toyota Solara \$15999 P16636, SLE, coupe, loaded	2002 Nissan Frontier \$18999 16891, 4 door, Kingcab, 4x4, auto, ps, air & more
2002 Mazda \$10999 P16662, loaded	2000 VW Beetle \$15999 16094, loaded	2001 Honda Passport \$20999 P16862, 4x4, loaded
2000 Mazda Minivan \$11999 16829, MPV, LX, loaded	2002 Toyota Tacoma \$16999 16728, 4x4, air, 8K miles	1999 Honda Odyssey \$21999 16820, EX, minivan, 4 dr, loaded
		2002 Nissan Xterra \$21999 P16863, 4x4, loaded

Mock's Used Truck Center

4X2s: Pickups, Mini & Passenger Vans

1988 Ford F-150 \$4988 16525, 4 spd, air, ps, am/fm, cassette, sliding rear window	2000 Ford Ranger \$12999 P16832, S.Cab, 4x2, XLT, loaded	2003 Ford Windstar \$17999 P16560, LX, minivan, auto, 7 pass, air, rear air, all power, tilt, cd
1992 Ford F-150 \$6999 16888, S.Cab, 4x2, XLT, loaded	2001 Dodge Dakota C. Cab \$14999 P5, 116, flatbed, 19K miles, 5 spd, air, ps, tilt, cruise	1999 Ford F-250 \$18999 P16833, S.Duty, SuperCab, 4x2, XLT, loaded
1995 Dodge Dakota \$7999 16747, Club Cab, loaded	1999 Ford F-150 \$15999 16836, S.Cab, 4x4, XLT, loaded	2003 Ford E-350 \$19999 P16588, passenger van, XLT, loaded
1998 Plymouth Grd Voyager \$10999 P16466, SE, auto, 7 pass, air, all power, tilt, cruise	1999 Chevrolet Suburban \$16999 P16661, LT, loaded	2003 Ford \$20999 P16866, 12 passenger, XLT, loaded
2003 Ford Ranger \$11999 P16750, XL, 4,731 mi.	2002 Chrysler Town & Country \$16999 P16714, minivan, fully loaded	2003 Ford Windstar \$23999 P16872, S.E.L, loaded
	2002 Ford E-150 \$17999 16879, 8 passenger van, loaded	2001 Ford F-150 \$25999 P16494, XLT, SuperCrew, loaded

4X4s: Pickups & Sport Utility Vehicles

1987 Ford Bronco \$5999 16846, 4x4, XLT, loaded, 59,000 actual miles	2003 Ford Ranger \$18999 P16886, 4x4, S.Cab, XLT, 5 sp, ps, air, 11k miles	2001 Ford F-250 \$25999 16704, SuperCab, XLT, 4x4, 5 spd, loaded, 17k mi.
1997 GMC Jimmy \$9999 16571, 75k miles, auto, 4x4, air, all power, tilt, cruise	1999 Chevrolet Tahoe \$19999 16837, 4x4, LT, 4 door, loaded	2001 Ford Expedition \$26999 P16737, 4x4, Eddie Bauer, loaded, white
2000 Jeep Cherokee \$14999 P16530, classic 4 dr, 4x4, air, all power, tilt, cruise, am/fm, cassette	2002 Ford Ranger \$19999 P16752, S.Cab, 4x4, XLT, loaded	2000 Ford F-350 Lariat \$27999 P16821, SuperDuty, 4x4, CrewCab, loaded
1998 Dodge Club Cab \$15999 16727, 4x4, 3/4 ton, loaded	2003 Jeep Wrangler \$19999 16771, Hard Top, 4x4, loaded 10k miles	2000 Ford Excursion \$27999 16849, 4x4, Turbo Diesel, loaded, limited
2001 Ford Escape \$16999 P16690, XLS, 4x4, V6, loaded	2001 Jeep Grand Cherokee \$20999 P16861, 4x4, loaded	2000 Ford Excursion \$27999 16877, Turbo Diesel, XLT, 4x4, loaded
2000 Dodge Durango \$17999 16841, 4x4, SLT, loaded	2000 Ford F-150 \$21999 P16887, S.Cab, 4x4, Lariat, loaded, 38k	2000 Lincoln Navigator \$29999 16635, 4x4, loaded
2002 Chevrolet Blazer \$17999 16826, 4 door, 4x4, LS, loaded	2001 Jeep Grand Cherokee \$21999 P16864, 4x4, loaded	2003 Ford Expedition \$31999 P16777, 4x4, XLT, loaded
1998 Dodge Ram \$18999 P16529, Club Cab, 4x4, long bed, auto, air, all power, tilt, cruise	2003 Ford Ranger \$21999 P16751, S.Cab, 4x4, XLT, loaded	2001 Ford F-250 \$33999 P16467, SuperCab, Lariat, 4x4, diesel, auto, air, all power, leather
1999 Chevrolet Suburban \$18999 P16822, LT, 1500 Sport Utility, 4x4, loaded	2000 Ford Excursion \$22999 16741, 4x4, loaded	2002 Ford Excursion \$34999 P16168, 4x4, Limited, loaded
2001 Ford Escape \$18999 P16715, 4x4, XLT, loaded & sharp!	2002 Ford Explorer \$23999 16252, XLT, 4x4, auto, air, rear air, all power, tilt, cruise, cd	2003 Ford Expedition \$35999 P16773, 4x4, Eddie Bauer, TV, loaded
2001 Dodge Durango \$18999 P15538, SLT, 4x4, auto, air, all power, tilt, cruise, 3rd seat	2002 Ford F-150 \$23999 16611, SuperCab, 4x4, 19k miles, XLT, loaded	2003 Lincoln Navigator \$44999 P16355, fully loaded
	2003 Mercury Mountaineer \$23999 P16664, loaded, 4x4, 3rd seat	2003 Hummer H2 \$49999 P16778, 4x4, loaded

110 POINT INSPECTION On Every Mock's Used Vehicle!

toll free **1-800-NEXT CAR**
6398-227
MEDFORD 779-6273

When I was born, I was so surprised I didn't talk for a year and a half.
- Gracie Allen -

IVHS Activities Calendar
Brought to you by the folks at
WILD RIVER & BREWING CO.
592-3556
Cave Jct.
469-7545
Brookings/Harbor
Blame us if your life goes to Pappa!

THURSDAY, APRIL 22
*Track - here - North Valley & New Hope 3:30 p.m.
*Spring Concert - 7 p.m.
FRIDAY, APRIL 23
*Equestrian at Medford all day
SATURDAY, APRIL 24
*Varsity softball & JV baseball at Hidden Valley 10 a.m. (doubleheader)
*Varsity baseball vs. Hidden Valley - here 10 a.m. (doubleheader)
*Equestrian at Medford all day
*Prom - 8 p.m. to midnight
SUNDAY, APRIL 25
*Equestrian at Medford all day
MONDAY, APRIL 26
*Girls golf at Stewart Meadows - noon
TUESDAY, APRIL 27
*Varsity softball vs. Mazama - here - 4:30 p.m.
*Varsity baseball at Mazama - 1 p.m.
*Track at Rogue River 3:30 p.m.
*Boys golf at Quail Run noon
*JV golf - here - 3 p.m.