

Here, There & Everywhere

GIRLS BASKETBALL PLAYOFF - Illinois Valley High School will host a girls Skyline Conference basketball playoff game on Friday, Feb. 27 at 7 p.m. in Ken Mann Memorial Gym. There is an admission fee.

HOME GARDENING SEMINAR - Josephine County Master Gardeners will present its annual Home Gardening Seminar on Saturday, March 6 at Rogue Community College from 8:30 a.m. to 4:30 p.m. More than 25 classes are scheduled. There is a fee. Register in advance at the Josephine County Extension Office at 215 Ringuette St. in Grants Pass.

RAFFLE WINNERS - The Illinois Valley High School Boys Basketball Team appreciates everyone who donated prizes and bought tickets for making its raffle a success. Winners: Grand prize, Pete Milette; 2nd, Robin Jackson, 3rd; Gene Snook; 4th, Gary Montgomery; 5th, Holly Shinerock; 6th, Bev Morris; 7th, Anita Wright; 8th, Link Phillippi; 9th, John Olander; 10th, Dale Hopper; 11th, Ken Hix; 12th, Barb Gamble; 13th, Ted Bell.

FAC TREE PLANTING - Volunteers needed who are willing to bring hot food to tree planters Saturday, Feb. 28. Phone 592-4098.

PANCAKES & SWAP - There will be a pancake breakfast at the Selma Community and Education Center on Saturday, Feb. 28 from 8 to 11 a.m. in conjunction with a swap meet from 9 a.m. to 4 p.m.

NOTEPAD - Cub Pack 79 will hold its annual Blue & Gold Dinner at I.V. High School on Thursday, Feb. 26 at 6 p.m. "Genius Kits" and "Fellers' Cake" contests will be part of the event... **Line-dancing lessons** will be offered at I.V. Senior Center. Phone 592-6888 for more information... **"Water Stories and Other Occurrences,"** a series of cut-paper drawings by Susan Knight, will be shown March 4-20 at RCC FireHouse Gallery, Fourth and H streets, in Grants Pass.

Letters

(Continued from page 2)

forests. But now it is 2004, and things have changed.

There is a huge old-growth pine still standing on our family estate on Burch Drive. Grandpa didn't allow it to be cut back in the '40s. The only other tree of this size in our neighborhood that I know of is a humungous 400-year-old Douglas Fir at Gypsy Rose on Redwood Hwy.

Many Japanese and other world tourists stop to have their picture taken in front of it, but many valley residents are not even aware of its existence.

This is a call to people of Illinois Valley to wake up and reconsider that the new economy for this century must be based on restoration, reforestation, recycling and sustainability if we are to survive not only as a community, but as a species.

More deforestation is not a wise solution to our economic woes in the long run. We're all in this together. Let's make the best of a tough transition and embrace the reality that this is no longer a strictly local issue. Since the Biscuit Fire, it has magnified to a planetary level.

The world is watching us.

Please don't drink and drive

Valley artists create and share ideas

By SHANE WELSH

Illinois Valley artists gather once a week to paint, sculpt, or work on anything their hearts desire.

Illinois Valley Fine Artists Inc. has been meeting since 1971 to create and share new ideas and artwork.

The group, which meets in the RCC Kerby Belt Bldg., has worked on several projects such as:

Publishing 6,000 color brochures for Kerbyville Museum; donating to the Illinois Valley Federated Woman's Club scholarship fund; producing a large Christmas arts and crafts

(Continued on page 8)



Valley artists at work at the RCC Belt Bldg. in Kerby



Questions and Answers by Christina Snell Executive Director at Lovejoy Hospice



In order to help you become better informed about hospice services, Lovejoy Hospice is publishing this

question and answer column every month. Look for us on the fourth Wednesday of every month in 'Illinois Valley News.' If you have questions you would like answered in this column, phone or Email us at the numbers below.

Question: "How do you handle taking care of people who are dying?"

Answer: It takes special people to do this work. Often the patient and family are reeling from the reality that they are not going to get well this time. There are feelings of failure and fear of what "might" happen. Hospice begins working with them to bring some peace, sense, calm, and hope during this chaotic time. Seeing relationships healed; families embracing; and, the look of peace on the patient's face is only part of the reason Lovejoy and other hospice workers are there to help.



The Heart of Caring
939 S.E. 8th St.
474-1193 or 1-888-758-8569
Email: Christina@lovejoyhospice.org

The
BOARDING HOUSE REACH
Restaurant

Breakfast - Lunch - Dinner

- ① "HOMEMADE" COUNTRY COOKING...
- ② "OUR OWN" ROASTED BEEF & PRIME RIB...
- ③ "SPECIALS" EVERY DAY...
- ④ "FOOD TO GO"...

"FAMILY DINING"...

18101 Redwood Hwy.
Selma, OR 97538
597-2111

Closed Tuesday & Wednesday...

Junction Inn
Timber Room Lounge
406 S. Redwood Hwy.
Cave Junction, Ore.
592-3106 Ext. 202

THE FUN WILL GO ON!
WINTER, SPRING, SUMMER OR FALL

HERE ARE THE FUN EVENTS:

Sunday - Thursday - FREE appetizer specials 6 to 7 p.m. - ONLY!

Every Wednesday - Ladies Night 5 p.m. to closing

Every Thursday - Karaoke Night with April Fisher - 8 p.m.

Every Friday & Saturday - Live Music - 9 p.m. to 2 a.m.

***ANNOUNCEMENT! JUNCTION INN is now an authorized retailer by Oregon Lottery effective Jan. 14, 2004 Machines will be available very soon!**

LIVE MUSIC SCHEDULE:

Feb. 27 - 'Blind and Crazy'
28 - 'Route 66'
March 5 & 6 - 'In Flight'
12&13 - Southern Oregon Blues Band
19&20 - 'Jupiter Hollow'
26&27 - 'In Flight'

April 2 - Tim Mitchell (solo)
3 - Sunny Sundstrom (solo)
10 - 'Tide Water Groove'
16&17 - Tim Mitchell and 'It's Beats Workin'
23 - 'Broadway Phil & the Shouters'
24 - 'Renegades'
30 - 'Shadowz' Band
May 1 - 'Shadowz'

DON'T MISS THE FUN!

Tuesday through Saturday
11 a.m. to 8:30 p.m.

Closed Sunday & Monday

592-3228
355 Caves Hwy.



Lunch & Dinner

Dave's Perfect Pizza

212 N. Redwood Hwy. (next to I.V. Video)

SPECIAL!

Buy any X-large Pizza

at regular price

and get a medium single-topping pizza for only \$1.99!

Phone for delivery 592-2220



TAYLOR'S Sausages

COUNTRY STORE
202 S. Redwood Hwy.
592-5358

TAYLOR'S SPECIALS
Lean, Meaty, Plump, Smoked
Garlic Franks - \$2.19 per lb.

*Fresh Italian Bulk Sausage - *Sweet *Hot - \$1.69 lb.*
Lean Boneless Beef Chuck Roast - \$1.98 lb.

Events -

*Thursday, Feb. 26 - 'Special guest chef' Steve Welch
Stuffed Salmon Cardinale (Pacific wild-run fish) or Sauerbraten - \$10.95

*Friday, Feb. 27 - Southern Oregon Blues Band

*Saturday, Feb. 28 - Joan Arrah Warren - 'Originals'
Friday & Saturday Dinner Special:
Scampi with Rice - \$9.95

*Friday, March 5 - 'Imbas'

*Saturday, March 6 - Michelle LeComte & Tim Wallace

THURSDAYS - 6:30 p.m. - Open 'Mic' Night with Jake Thompson and Jefferson plus Scrabble competition

We're open at 6:30 a.m.
TRY OUR DELICIOUS ESPRESSO & BREAKFAST

The Kerby Transfer Station

is open

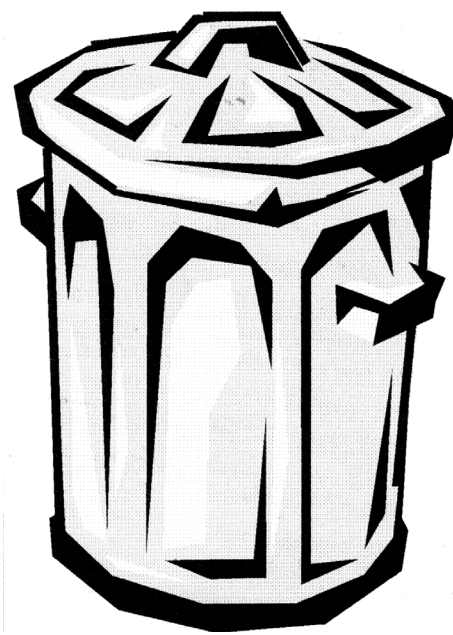
Saturdays:

9:30 a.m.

to

2:30 p.m.

Hours: Mondays - Saturdays
9:30 a.m. to 2:30 p.m.
For more information
phone (800) 922-1025



Southern Oregon Sanitation