

# Here, There & Everywhere

**MERRY MUSIC** - There will be a Christmas open house at the Kerbyville Museum on Saturday, Dec. 20 from 10 a.m. to 4 p.m. Guitarist Dale Hopper will perform selections from his new CD of gospel music. Refreshments will be served. A small admission fee will be charged.

**CJ CHRISTMAS** - Cave Junction Cares will hold its annual Christmas breakfast from 10 a.m. to 2 p.m. on Thursday, Dec. 25 at Jubilee Park pavilion. Santa Claus will hand out toys to the kids. Donations of toys, money and volunteers are needed. Phone Lynn Boucher at 592-6855 for more info.

**CHRISTMAS CHEER** - Home Valley Bank, Klamath First and Evergreen Federal Bank are accepting non-perishable food and unwrapped toys for the annual I.V. Christmas Basket Program sponsored by I.V. Family Coalition. The deadline for donations of money, food and toys is Friday, Dec. 19.

**GIFT GIVING** - A blood drive sponsored by American Red Cross (ARC) will be held at the Illinois Valley Senior Center on E. River Street on Thursday, Dec. 18 from noon to 5 p.m. To schedule a donation or for information phone (800) 826-5920. ARC schedules blood drives at the center on a continual basis every few months.

**Notepad - The Senior Meals Program**, Food & Friends, seeks volunteers to deliver hot meals to homebound seniors once a week. Training and mileage reimbursement are provided. Phone 955-8839 for more info...**Lovejoy Hospice** will present "Hospice Nurses- Special People, Special Practice" on Monday, Jan. 12 from 12 to 1 p.m. at 939 S.E. Eighth St. in Grants Pass. RSVP to (541) 474-1193 by Jan. 5...**Rogue Community College** Small Business Development Center offers a range of continuing services. Phone (541) 956-7494 for more information.

• MATTRESS SETS • BEDROOM COLLECTIONS  
• FUTONS • BUNKBEDS • DAYBEDS  
• WALL BEDS • SOFA SLEEPERS • FIREPLACES

**BEDS FOR LESS**  
www.bedsforless.com / Open 7 Days

Grants Pass Shopping Center  
(next to Staples)  
**541-474-1060**  
also in Medford & Grants Pass

*The*  
**BOARDING HOUSE REACH**  
*Restaurant*

Breakfast - Lunch - Dinner

- "HOMEMADE" COUNTRY COOKING...
- "OUR OWN" ROASTED BEEF & PRIME RIB...
- "SPECIALS" EVERY DAY...
- "FOOD TO GO"...

"FAMILY DINING"...

18101 Redwood Hwy.  
Selma, OR 97538  
597-2111

Closed Tuesday & Wednesday...

**Art's Red Garter Steakhouse & Saloon**

124 S. Redwood Hwy.  
592-2892

Open 5 to 9 p.m.  
Restaurant parking in rear

**RIVERSIDE PHYSICAL THERAPY**

FULL REHABILITATION SERVICES:

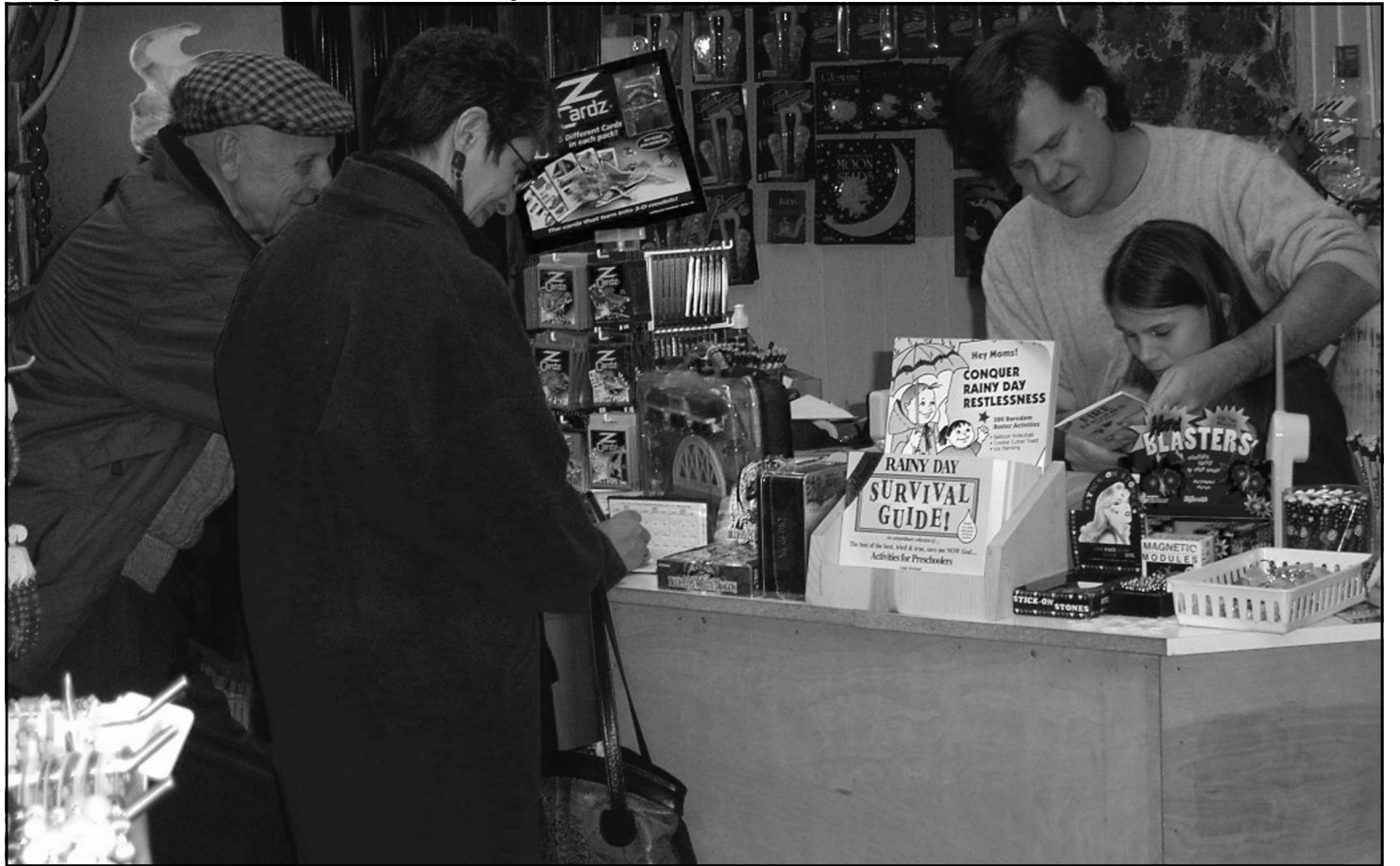
- PHYSICAL THERAPY
- OCCUPATIONAL THERAPY
- SPEECH THERAPY

**TWO LOCATIONS TO SERVE YOU**

CAVE JUNCTION OFFICE  
218 N. REDWOOD HWY.  
(541) 592-6580

GRANTS PASS OFFICE  
1619 N.W. HAWTHORNE AVE.  
SUITE 109  
(541) 476-2502

- JEFF WOOD, M.S., P.T.



**FINAL 2003 ART WALK** - Dec. 12 marked the final Second Friday Art Walk in Downtown Cave Junction until next year. At Child's Play, youngsters were able to

make window stars. Also at Child's Play, Deb Murphy autographed her collaborative, creative work books for children. (Photo by Michelle Binker)

## Biscuit Fire deadline ...

(Continued from page 1)

"sought a balance between busy holiday schedules and the economic losses anticipated from further wood decay."

The Biscuit Fire, which nearly resulted in the entire Illinois Valley being ordered to evacuate last year, burned some 500,000 acres of timberland.

During the past two weeks, the U.S. Forest Service and Bureau of Land Management's Medford District have conducted four public open houses, including one in Cave Junction.

An oral public hearing is scheduled for Wednesday, Dec. 17 from 5 to 9 p.m. at the Josephine County Fairgrounds in Grants Pass. Up to three minutes will be allowed

for any individual who wants to comment, said the forest service. A court reporter will record all comments.

The Biscuit Fire Recovery Project DEIS was released publicly on Nov. 21 for a 45-day public comment period. It was to end on Jan. 5.

All written, faxed, or electronic comments should be sent to Scott Conroy, c/o ACT2 Enterprise Team, P.O. Box 377, Happy Camp CA 96039; faxed to (530) 493-1776, or e-mailed to [r6\\_biscuit@fs.fed.us](mailto:r6_biscuit@fs.fed.us). The DEIS is posted at [www.biscuitfire.com](http://www.biscuitfire.com).

For more information about the DEIS, including the recommended alternative for harvesting timber, contact Judy McHugh at (541) 471-6500.

## Flu season ...

(continued from page 1)

more than five to seven days without relief, or if shortness of breath develops, a possible sign of pneumonia.

SCHC has flu shots available for children and adults. Cost is \$15 or it can be billed to Medicare. While the vaccine has been formulated to target flu strains similar to, but not specifically Fujian, health workers strongly encourage people who are most at risk for complications from the flu to get themselves immunized. Those older than 50; with heart, lung, or kidney problems; with low immunity; or children between the ages of 6 months to 23 months could derive some protection by getting the shot.

**Perry's Wood Shop**  
Saturday, Dec. 6  
8 a.m. to 4 p.m.  
245 Floyd Lane  
(2 miles up Rockydale Road off Redwood Hwy.)

**Senior Nutrition Menu**  
Sponsored by  
**True Value.**  
592-3562

(541) 592-2126, 474-5440  
Meals are served in the CJ County Bldg.  
**FRIDAY, DEC. 19**  
\*Baked ham with raisin sauce, scalloped potatoes, green beans Almondine, corn bread, cranberry crunch  
**MONDAY, DEC. 22**  
\*Beef Swiss style steak, Delmonico potatoes, Italian vegetables, dill bread, butterscotch bar  
**WEDNESDAY, DEC. 24**  
\*Closed for holiday

**We want 1/3 of your day!**  
to enjoy the fun at  
Junction Inn  
**Timber Room Lounge**  
406 S. Redwood Hwy.  
592-3106 Ext. 202

**FREE** appetizers/soup Sun. - Thurs. 4:30 - 7:30  
**FREE** pool all day Sunday & Thursday  
**Cheap Appetizers**  
from \$1.50 to \$2.50 available only at the bar

**Timber Room Lounge Events**  
**Wednesday, Dec. 17:** Pool Tournament/Ladies Night 7 - 10 p.m.  
**Thursday, Dec. 18:** Karaoke Night with April Fisher 8 p.m. - midnight  
**Friday, Dec. 19:** Road Master Band from Ashland (no cover)  
**Saturday, Dec. 20:** Tide Water Group Band from Grants Pass (no cover)  
**Sunday, Dec. 21:** We will be closed for Junction Inn's employee's Christmas party

**NEW EVERY FRIDAY & SATURDAY**  
\*We serve food from 4 p.m. - 12:30 a.m.  
\*We accept 'to go' orders as an extra service to our customers

Frontier, a Citizens Communications Company, is a community telecommunications service provider who offers basic and enhanced services at reasonable rates within its serving areas. Basic services are offered at the following rates:

Single Party Residence Service	\$ 12.67 / mo.*
Single Party Business Service	\$ 22.32 / mo.*
Federal Subscriber Line Charge- Single Line (Residence and Business)	\$ 6.50 / mo.
Federal Subscriber Line Charge- Non Primary (Residence)	\$ 7.00 / mo.
Federal Subscriber Line Charge- Multi Line (Business)	\$ 9.20 / mo.
Directory Assistance	\$ 0.50 / call after initial 2 calls
Touch Tone Service	No charge
Toll Blocking	\$ 2.40 / mo.
Emergency 911 Services	Charge varies based on location
Emergency 911 Calls	No charge for calls to 911

Low-income individuals eligible for Lifeline and Link-Up telephone assistance programs may be eligible for discounts off these basic local service charges through state-specified telephone assistance plans.

Basic services are offered to all consumers in the Frontier territories at the rates, terms and conditions specified in the Company's tariffs. If you have any questions regarding the Company's services, please call us at 800-921-8101 for further information.  
\* Additional charges apply for Extended Area Services

www.FrontierOnline.com  
OR 11/03

**frontier**  
A Citizens Communications Company

**2 large cooked 2-topping pizzas \$19.99**

or

**2 extra-large cooked 2-topping pizzas \$22.99**

**Dave's Perfect Pizza**

212 N. Redwood Hwy.  
(next to I.V. Video)

Phone for delivery  
**592-2220**