

Chamber board drive ...

(Continued from page 1)

phone Moore at 592-3326.

Crocker noted that he recently learned he cannot hold office related to access to funds under rules of the professional accounting organization to which he belongs.

He also agreed with San that there is not enough communication between directors outside the monthly board meetings. "It's a weakness," he said.

He also agreed with San's suggestion that the chamber hold general meetings with speakers for the membership, besides the monthly board gatherings. It was noted that the chamber newsletter is a good step toward improving communication with the membership, although some said that members often don't read them, which means they are unaware of activities.

San also suggested that perhaps the board should

conduct breakfast meetings, rather than lunch meetings.

The latter, he said, often make it difficult for directors who own and operate their own businesses to attend.

Directors were to discuss the idea during the next few weeks. The next board meeting was set for Nov. 20 at Wild River.

In another matter, the board received a report from Director Vicki Gill (SOFCU) that a profit of \$640 was realized from the first chamber golf tournament recently.

Gill told the board, through Moore, that next year's event will raise more for the chamber, as she learned a lot from her first time organizing such an event.

Moore reported that 1,950 persons went to the I.V. Visitor Center during September, one less than during September 2002.

IVCRT Insights

By RON PHILLIPS

CRT has submitted a grant application for a USDA Rural Community Development Initiatives grant. This grant would double any funds that a participating non profit organization wanted to spend on 'capacity building.'

Building capacity could take the form of training for staff or board members or technical assistance to address organizational issues.

Three non profits in I.V. signed on so far; they are the I.V. Safe House Alliance (IVSHA), I.V. Family Coalition, and the Siskiyou Field Institute. Another five organizations from Wolf Creek to Sunny Valley will be participating as well.

Fund-raising was the area that almost all of the organizations wanted assistance for, including grant writing training, managing capital campaigns and community fund-raising. Given the state budget deficit, cut-backs in federal funding, and the drop in the stock market, both public and private foundation money has decreased significantly. As a result, many programs have had to cut back services or -- as in the case of IVSHA -- have found it more difficult to raise funds for new projects.

One of the activities planned is sending a team to a "Raise More Money" workshop. As the name suggests, Raise More Money is a proven fund-raising program that has been effective in rural areas like Josephine County. The RMM program would lend itself to a cooperative approach with different non profits working together in a local "United Way" type campaign.

Rather than competing with one another, this collaborative strategy could increase the size of the pie so that everyone was better off. CRT tried to reach out to as many non profits in the area to include them in the grant. However, if those organizations not included are interested, phone the CRT office. Many of the trainings will be duplicated locally, and there will be other ways for those non profits to benefit.

CRT Reorganizing Effort Update
CRT Board has had

two additional sessions with the consultants, who are helping the board reshape the organization so that it can continue to serve the community in a new way. The primary function of the board in the first eight years was to approve requests from area organizations for federal SSBG funds and to develop projects that met objectives in the Strategic Plan.

With the SSBG funds gone and the CRT having to become self-sufficient and use funds earned through ventures like the Oregon Caves National Monument the picture becomes far more complicated.

Not only will the board have to analyze and approve investment decisions and monitor various business activities, but it will oversee the development of new projects and programs.

One of the key decision areas will be allocation of the Oregon Caves Outfitters (OCO) profits between new investments/project match, CRT operations, and grants to community groups.

All three uses will directly or indirectly benefit the valley. Funds for new investments will solidify and diversify the sustainability base, while simultaneously providing additional benefits like OCO does creating jobs and marketing local products.

CRT funding fuels the effort needed to bring in new investments, projects and programs. Of the \$145,000 CRT annual operating budget (down by \$10,000 from last year), only 75 percent would come from OCO profits. This represents less than 60 percent of anticipated profits. This percent decreases each year in the future as new sources of income are developed. As the surplus grows, more and more funds can be

given directly back to the community.

Like in architecture where form follows function, CRT needs to restructure itself so that it can effectively handle these new tasks. The challenge is to balance community involvement with the requirements to making more and more complicated decisions.

As things evolve, there will be opportunities for review/comment and the entire package will be presented at the annual meeting.

New Guild in Town

The Southern Oregon Guild has just been formed as a non profit membership

organization to help those who produce objects of significant artistic or functional value to improve their craftsmanship, expand their markets, and through mutual association, find greater joy and commercial success.

Membership is open to all who enjoy and participate in fine craftsmanship with a special emphasis on those who derive - or who aspire to derive - a significant portion of their income from the sale of their work. Anyone who facilitates the sale of guild member work is also eligible. For more information, phone Jerry Work at 592-5360.

When you drink the water,
remember the spring.
--Chinese proverb--



Tony's Barber Shop

1691 Rogue River Hwy., Grants Pass
(541) 471-0830

Quality haircuts
at reasonable rates
You will look better,
feel better & do better
with Tony's neat cuts!

'Where
the
nicest
people
meet'

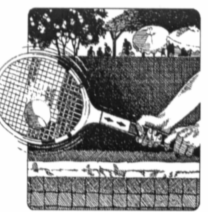
OPEN MONDAYS!
Monday - Saturday (Phone for hours)

RIVERSIDE PHYSICAL THERAPY



FULL REHABILITATION SERVICES:

- PHYSICAL THERAPY
- OCCUPATIONAL THERAPY
- SPEECH THERAPY



TWO LOCATIONS TO SERVE YOU

CAVE JUNCTION OFFICE
218 N. REDWOOD HWY.
(541) 592-6580



GRANTS PASS OFFICE
1619 N.W. HAWTHORNE AVE.
SUITE 109
(541) 476-2502

• JEFF WOOD, M.S., P.T.

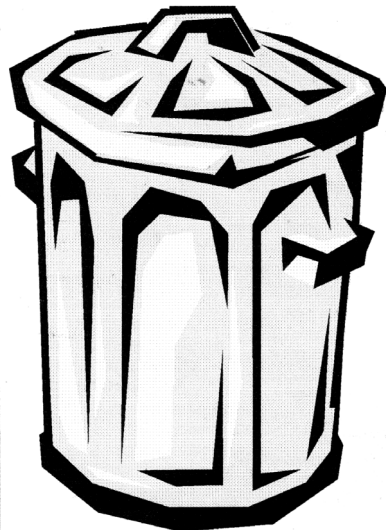
The Kerby Transfer Station

is open

Saturdays:

9:30 a.m.
to
2:30 p.m.

Hours: Mondays - Saturdays
9:30 a.m. to 2:30 p.m.
For more information
phone (800) 922-1025



SOS will no longer accept
scrap metal until further notice.

Southern Oregon Sanitation

Art's Red Garter Steakhouse & Saloon

124 S. Redwood Hwy.
592-2892

Open 5 to 9 p.m.
Restaurant parking in rear

I.V. Citizens Patrol & Junction Inn

would like to thank the following businesses for their support during the first annual I.V. Citizen's Patrol fund-raiser

HOLE & TROPHY SPONSORS:
Wild River Brewing & Pizza Co.
Taylor's Sausage Country Store
Oregon Mountain Real Estate
Shop Smart Food Warehouse
Valley Muffler & Hitch
Oregon Cave Chevron
Crossroads Animal Hospital
Bobbie's World
Home Valley Bank
Da Kine Grinds
A&B Clothing and Shoe Store
Cave Junction True Value
Darn Near Everything

Special thanks to I.V. Golf Course & 'I.V. News'
Special appreciation goes out to Robert Stellflug Construction for his generous Gold Sponsor donation.

Bookkeeping Etc. by Vivian

Bookkeeping
Payroll and Quarterlies
Check Book Reconciliation
Year-end Reports
Typing and Letter Writing

CONFIDENTIALITY ASSURED

Your location or mine - Phone for details - (541) 596-2038

Thinking About Buying Manufactured Home? Think Again!

OPEN HOUSE SATURDAY & SUNDAY 10 TO 4
790 TALBOT RD. IN EAGLE POINT
See Map Below For Directions

\$56,950* = \$33.46 Per Square Foot
PLANS FROM 1192 sq.ft. to 2080 sq.ft.
Adair Homes are 100% site built; not manufactured, modular or panelized.

*Price excludes owner provided items, site development, mileage & utilities. Ask us for details.

"Practical Homes For Practical People!"
Office Open Monday to Friday • 10 AM to 6 PM
Since 1969

ADAIR HOMES

CCB #593

541 Business Park Drive
Suite A, Medford, OR

(541) 732-1560