



**ROTC OPERATION PATRIOT** - Seventeen members of the U.S. Air Force Jr. ROTC program at Illinois Valley High School (various members shown above) participated last month in infantry training under the Oregon Army National Guard. Participants were at Camp Relia in Astoria for the weekend. Attending from IVHS: Capt. Todd Lange, Capt. Shane Patton, 1st Lt. Adam Miller, MSgt. Matt Thompson, 1st Sgt. Scott Hopkins, Tech. Sgt. Travis Pernicka, Tech. Sgt. Jason Thompson, Staff Sgt. Mike Pernicka, Staff Sgt. Daniel Clausitzer, Staff Sgt. Brian Locklin, Senior Airmen Anah Peckham, Mike Starns, Joel McCormick, Aaron Stetz; AIC Charity Madden, AIC Steven Reese, and Sgt. Andy Bebeau. The IVHS squad won first place in the confidence course. Peckham was first in pugil sticks for girls; Madden was first in rock climbing for girls; Mike Pernicka was first in pugil sticks for boys; and Hopkins took first in rock climbing for boys. (Photos and facts provided courtesy of Gene Owens/Fortuna, Calif.)

## U.S. Lumber consumption at all-time high

U.S. lumber consumption roared to an all-time high in 2002, fueled by strong activity in the repair/remodeling and new home construction sectors, according to preliminary figures released by Western Wood Products Association (WWPA).

Estimates show U.S. lumber consumption totaled 56.3 billion board feet in 2002, surpassing the previous record of 54.3 billion board feet set in 1999. Consumption in repair/remodeling jumped 11.9 percent in 2002 to 18.1 billion board feet, while demand for lumber in new residential con-

struction rose 4.9 percent to 22.3 billion board feet, according to WWPA.

Lumber imports entering the country also reached a new high rising to 21 billion board feet in 2002. Canadian imports rose 2.1 percent to 19.1 billion board feet while non-Canadian imports spiked 37.5 percent to 1.9 billion board feet.

Output at western mills increased 5.5 percent to an estimated 17.4 billion board feet. Mills on the Oregon and Washington coastal region increased production 10 percent to 9.6 billion board feet

and accounted for most of the gain in the West.

In 2003, lumber demand will likely fall 1.8 percent to 55.2 billion board feet. Even with the anticipated decline, 2003 would be the second-highest lumber consumption year on record.

A predicted rise in interest rates in the latter part of 2003 should slow new home construction modestly to 1.65 million units for the year.

The Portland-based trade association said western lumber production is expected to ease 1.9 percent to 17 billion board feet due, in line with the consumption declines.

## R&R ESOP on hold until mill reopens

By SAM NEWTON

Waiting for all T's to be crossed and I's to be dotted, the Rough & Ready Lumber Co. Employee Stock Ownership Plan (ESOP) Committee remains active and in a holding pattern until all contracts are signed and the mill is up and running.

"We are waiting to make sure it's a 'done deal,'" said Bob Wendover, a mill employee and committee member.

"Our (the ESOP) ultimate goal was to keep the mill open; we totally support Link and Jennifer Phillipi in their endeavor."

The couple, principals in Rough & Ready, announced plans recently to purchase the business and keep it in operation, but with half the 150-person workforce. The company has had to curtail operations because of a lack of timber being made available for harvesting.

Said Wendover, "There is a tentative reopening date of the mill of May 19, (where operations and employees have been in the process of being phased out for several months). Once that happens the committee hopes to return (with thank you cards) all contributions made to the ESOP by all businesses and individuals," he said.

"We are all very grateful to the contributors and also for the determination of the employees during this process," said Wendover.

I.V. Lions Club  
Easter Egg Hunt  
See ad on page 5



**ART WALK** - Billie Coakley, owner of Cabin Chemistry, next to Stevereno's Family Restaurant and Lounge, reads from a poem written by a friend during the first Second Friday Art Walk of 2003 held on April 11 in Downtown Cave Junction. The reading was part of 'Celebrating Survival,' an open mic event to help sexual assault survivors experience healing through the spoken word. (Photo by Britt Fairchild)

**MASSAGE THERAPY** OR License #2311  
**Pain - Stress - Injuries**  
**Deep Massage - CranioSacral Therapy**  
**Tues. - Sat. by appointment**  
**Senior Discounts - Gift Certificates**  
**Foot Massage Class coming Saturday, Feb. 22**  
**Phone for Information**  
**Rachel Goodman, LMT 202 W. Lister - 592-6947**

**DOG & DRAFT - \$3**

**Taylor's Sausage** 5 to 8 p.m.  
**Monday, Tuesday & Wednesday ONLY!**

*IBIC Forestry Action Committee*  
*Annual Riparian Restoration*  
**TREE PLANTING**

**PARTICIPATING GROUPS**

- \* Illinois Valley Landowners \* Oregon Watershed Enhancement Board \* FishAmerica Foundation \* I.V. Ranger District/U.S. Forest Service \* Galice Ranger District/U.S. Forest Service \* Illinois Valley Soil & Water Conservation Dept. \* Medford Dist./Bureau of Land Management \* California Dept. of Fish & Game \* Oregon Dept. of Fish & Wildlife \* Natural Resources Club, Humboldt State University \* Evergreen Elementary School \* Lorna Byrne Middle School \* Illinois Valley High School \* Community Christian Academy \* Madrone Adventist Elementary School \* Discovery Acres Learning Center \* Dome School \* Illinois Valley Boys & Girls Club \* Girls Scout Troops 123 & 127 \* Boy Scout Troops 22, 23, 24 & 880 \* Cub Scout/Webelos Packs 79 & 880 \* IVHS Key Club \* Illinois River Riders 4-H Club \* Cave Junction Lions Club \* I.V. Safe House Alliance \* I.V. Woman's Club \* Southern Oregon Fly Fisherman \* Middle Rogue Steelheaders \* Trout Unlimited \* Lomakatsi Restoration Project \* I.V. Golf Course
- \* City of Cave Junction \*

## GROUPS DONATING GOODS & SERVICES

- \* I.V. Ranger District/U.S. Forest Service— office, storage, phone, photocopier, planting tools & technical & clerical support \* Medford Dist./Bureau of Land Management— technical support, seedlings, seed & planting tools \* I.V. Soil & Water Conservation District— donation to youth groups & food \* I.V. Watershed Council—technical support
- \* Rough & Ready Lumber Co. - tree cooler space \* Althouse Nursery - seedlings \* J. Herbert W. Stone - USFS Nursery—seedlings \* Oregon Dept. of Forestry—planting tools \* California Dept. of Fish & Game—speaker, technical support & planting tools \* Josephine County Dept. of Forestry—planting tools \* Gold Beach Ranger District/U.S. Forest Service —mycorrhiza \* Galice Ranger District/U.S. Forest Service—planting tools, technical support \* Oregon Talk About Trees Program—speaker, educational materials \* Millie Chadderton—certificate artwork \* Sprague (BLM) Seed Orchard—seedlings & technical support \* 'I.V. News'—articles \* Siskiyou Greenhouses, Inc.—potting soil \* Grants Pass Daily Courier—articles \* I.V. Senior Center - article \* First American Collection Escrow Services (Josephine County Title)— address verification \* Evergreen Elementary School kids - tone of awesome artwork \* Shop Smart Food Warehouse— space for artwork, treebags & cash donation \* Select Market -space for artwork
- Ray's Garden Center— youth planting tools \* Mrs. Jobe's Bakery - food \* Blue Marlin Food \* Blue Moon Coffee & Books - coffee \* Carlos Restaurant— food \* Junction - food \* Pizza Pit - food \* River Valley Restaurant - food
- \* Stevereno's Family Restaurant & Lounge - food \* Taylor's Sausage - food
- \* Wild River Brewing & Pizza Co. - food \*

**AND THE MANY GENEROUS INDIVIDUALS**  
**who donated time, energy, advice, cooking,**  
**photography, plant packing,**  
**planting & seedling care.**

**THANK YOU!**

**for making the 2003**  
**Tree Planting Project a success!**  
**'People helping people plant trees.'**

## The Kerby Transfer Station

is open

**Saturdays:**

9:30 a.m.

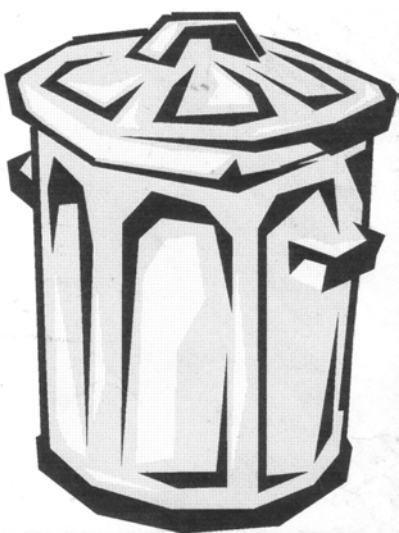
to

2:30 p.m.

Hours: Mondays - Saturdays

9:30 a.m. to 2:30 p.m.

For more information phone (800) 922-1025



# Southern Oregon Sanitation