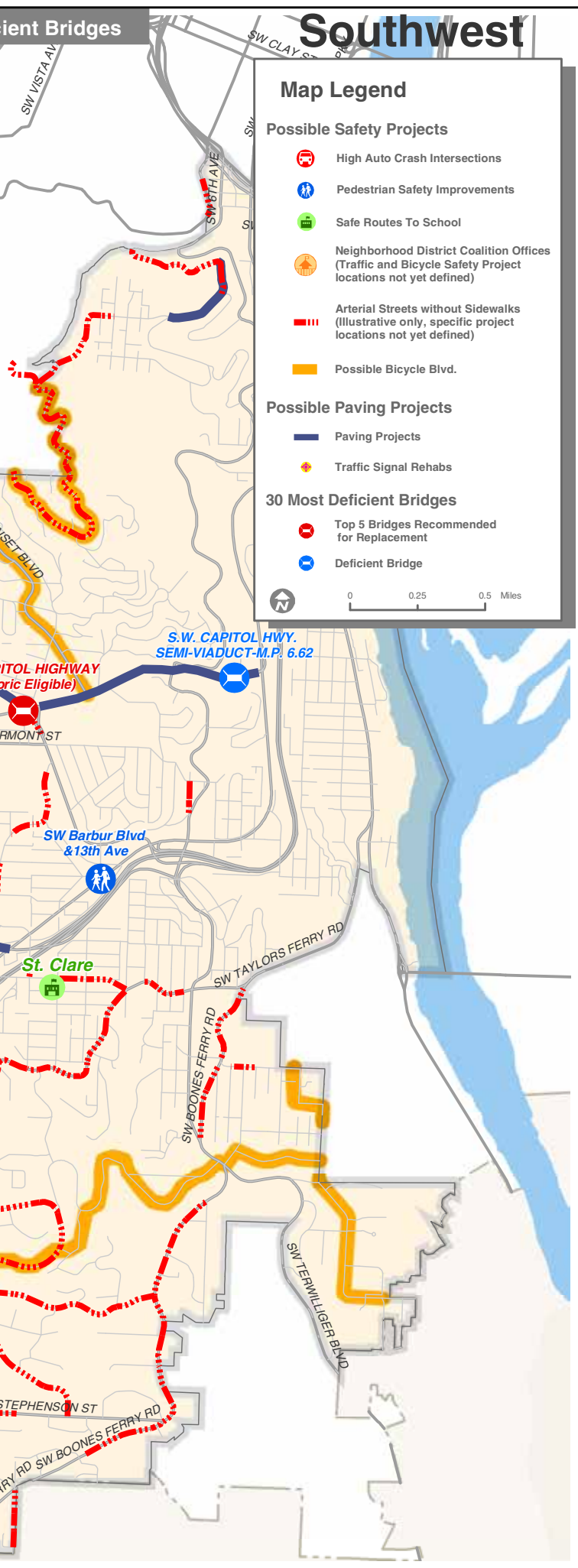


Neighborhood?



Many bridges in Portland are in critical need of repair like the Bybee bridge, shown above, before it was updated

Maintaining Portland's Roads and Bridges

IMPROVE MAJOR ARTERIALS IN POOR CONDITION

Priority projects in your neighborhood — Beaverton Hillsdale Hwy from Bertha to 65th, Multnomah from Barbur to 45th, Capitol Hwy from 49th to Barbur, Capitol Hwy from Barbur to 30th, Taylors Ferry from 65th to Barbur, Vista from Laurel to Fatlon, Sam Jackson from Curry to Hooker, Multnomah from Oleson to 45th, Capitol Hwy from Barbur to Bertha

- ◆ Curb-to-curb maintenance and reconstruction to reduce future maintenance costs on arterials serving freight and transit routes
- ◆ Improve streets that are in poor and very poor condition

IMPROVE BRIDGES IN POOR CONDITION

Priority projects in your neighborhood — Both bridges are on SW Capitol Highway

- ◆ Bridge maintenance and reconstruction
- ◆ Prioritized projects based on weight limits, seismic problems, and their critical function on a transit or lifeline route

Minimizing Congestion

INCREASE ENFORCEMENT OF RECKLESS DRIVING ON HIGHWAYS

Priority projects in your neighborhood — I-5

- ◆ Increasing enforcement of reckless /drunk driving on these heavily used facilities will reduce fatalities and injuries. (Currently, State Police do not patrol state highways or the interstate system within Portland's city limits)
- ◆ Addresses the 40% of all congestion in the city that is non-recurring and primarily caused by crashes in these essential corridors for freight, commuting and emergency response.

IMPROVE SIGNAL TIMING & OPERATIONS

Priority projects in your neighborhood — Signal timing and operational improvements on Portland's busiest streets where engineering indicates major benefits from signal synchronization and timing changes

- ◆ Signal synchronization to reduce congestion and minimize gridlock
- ◆ Improved air quality (due to less fuel consumption and lower emissions)
- ◆ More efficient use of existing transportation infrastructure
- ◆ Safety improvements for pedestrians and bicyclists



Sidewalks, school in mud or



Crossing without crosswalks



Families can cycle on family-friendly boulevards with low traffic

Photo provided by Jonathan Maus/BikePortland.org



Red light cameras improve safety by dramatically reducing red light violations