

**NEIGHBORHOOD NEWS**

By Lee Perlman  
The Southwest Portland Post

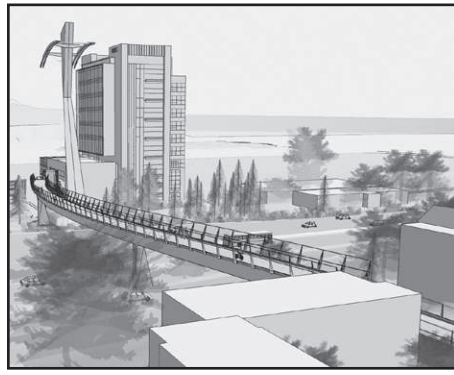
**Gibbs Street Pedestrian Bridge construction affects traffic**

The Gibbs Street Pedestrian Bridge now under construction has had some effect on local traffic, and is about to have more.

Periodically, preliminary work on the \$13.2 million span linking the South Waterfront with Southwest Kelley Street has necessitated closure of the I-5 Freeway off-ramp at Southwest Hood Street.

According to project manager Jean Sennechal Biggs, during two nights between late June and mid-July, late at night, the freeway itself will be closed. Ironically, the detour will utilize Hood for southbound traffic, while northbound traffic will be shunted to Southwest Macadam Avenue.

The closure will allow the relocation of overhead directional signs that the new bridge will hide from view, Biggs said. Sometime between late July and mid-August there will be a week of nighttime work as crews hoist a main



**Gibbs Street Pedestrian Bridge** (File illustration courtesy of Jody Yates, Portland Bureau of Transportation)

horizontal girder into place.

"This is exciting," Biggs said. "This is the real bridge." During this work the Hood exit may once again be closed.

The project is somewhat behind its original schedule due to more complicated than anticipated utility work at its inception. It was due for completion by January 31, Biggs said, but is likely to continue into mid-February.

**City breaks ground on affordable housing**

Work crews last month broke ground on a long-promised affordable housing

project in the South Waterfront. The six-story structure will be located on Block 49, bounded by Southwest Moody and Bond avenues and Lowell and Bancroft streets.

The new building will contain a total of 209 units. Of these, 42 units will be reserved for veterans earning 30 percent of median area family income (about \$15,000 for a single person household) or less. The rest will be affordable to people earning 50 percent M.F.I., or about \$25,000.

The \$50 million project is a partnership between the new Portland Housing Bureau and REACH Community Development. With 1,400 housing units, concentrated primarily in southeast Portland, REACH is the city's largest non-profit housing manager. They will manage the building and purchase 12,000 square feet of ground floor space for their new administrative offices.

The City of Portland is contributing \$29 million of the project cost, including \$21.71 million in tax increment funds from the North Macadam Urban Renewal District.

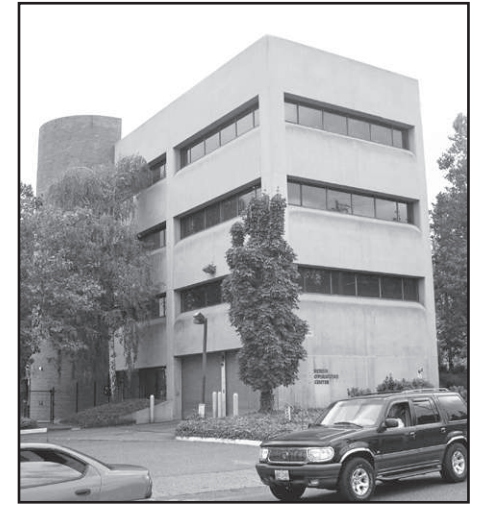
**Southwest neighborhood coalition holds board elections**

The board of Southwest Neighborhoods, Inc., a non-profit which contracts with the City to provide services to southwest neighborhood associations, was scheduled to hold its annual officer elections on May 25, and unlike some years the process promised to be contentious.

Chair Brian Russell of Multnomah is moving out of the neighborhood, and was not a candidate to retain his

office. Instead, Don Baack of Hillsdale, chair of the SWNI Trails Committee, and Marianne Fitzgerald of Ash Creek, Transportation Committee chair, were prepared to vie for the top spot.

At other positions, Jim McLaughlin of West Portland Park challenged incumbent Ken Love of South Portland for first vice-chair. Sharon Keast of Arnold Creek and Moses Ross of Multnomah were both seeking the second vice-chair position. Lee Buhler of South Portland was unopposed as secretary, as was Linda Troutman of Marshall Park as treasurer.



**South Waterfront jail** (Post file photo by Don Snedecor)

**Hearing set for South Waterfront jail**

A public hearing has been scheduled on a request for a conditional use permit for a detention facility for the federal Immigration and Customs Enforcement (Continued on Page 7)

**POST CLASSIFIED ADS**

**Education/Lessons**

*Le Monde Immersion accepting Kindergarten applications now!*  
Interested in a PUBLIC French immersion education option?  
Learn more at [www.lemondeimmersion.org](http://www.lemondeimmersion.org)

*Wellness Directory*

**Massage**

**Father's Day Special**  
**Three One-Hour Massages**  
**for \$140.00**

**Healing Touch Massage**  
**Dorothy Cundall, LMT, CNA, MA; LIC #5316**  
Energy healing • reiki • therapeutic massages  
• reflexology • pranic healing • care facilities  
*Holiday Specials • Gift Certificates • Visa & Mastercard*  
3836-B SW Hall Blvd  
**503-740-3670 or 503-629-5187**



**David Klick, LMT**  
Advanced Massage Therapy  
Since 1992  
License# 3927  
  
Deep Soothing Massage  
Garden Retreat Setting  
  
by appointment  
**503.977.3454**  
[www.advancedlmt.com](http://www.advancedlmt.com)

**Purchase a Classified Ad!**

**Print Only is \$32 per column inch** (up to 15 words per inch) Includes design! **Print and Online are \$64 per column inch.** Frequency discounts are available. Online Text Only is \$2 per word (15 word minimum).

**E-mail (preferred):**  
[ads@multnomahpost.com](mailto:ads@multnomahpost.com)

**Online Form:**  
[www.multnomahpost.com](http://www.multnomahpost.com)

**Phone: 503-244-6933**

**JONES & JONES**  
*Jewelers*

WE ARE NOW OPEN IN  
MULTNOMAH VILLAGE

- UNIQUE DESIGNS
- CUSTOM DESIGN
- EXPERT REPAIRS
- DIAMONDS
- COLORED GEMS
- MASTER CRAFTSMAN



[jonesandjonesjewelers.com](http://jonesandjonesjewelers.com)

7858 S.W. Capitol Highway ~ Portland Oregon  
503-223-6020 ~ 800.316.4314



**Your Mow & Go Service**

Average lawn service less than \$20 with over 10,467 served. We offer free estimates, serve the Portland Metro area & we do not require a contract. Save by signing up today & get your lawn into shape for summer fun!

**(503) 244-2314**  
[info@cleancut1.com](mailto:info@cleancut1.com)  
[www.cleancut1.com](http://www.cleancut1.com)

Fully Insured

**Clean Cut**  
*of SouthWest Portland*