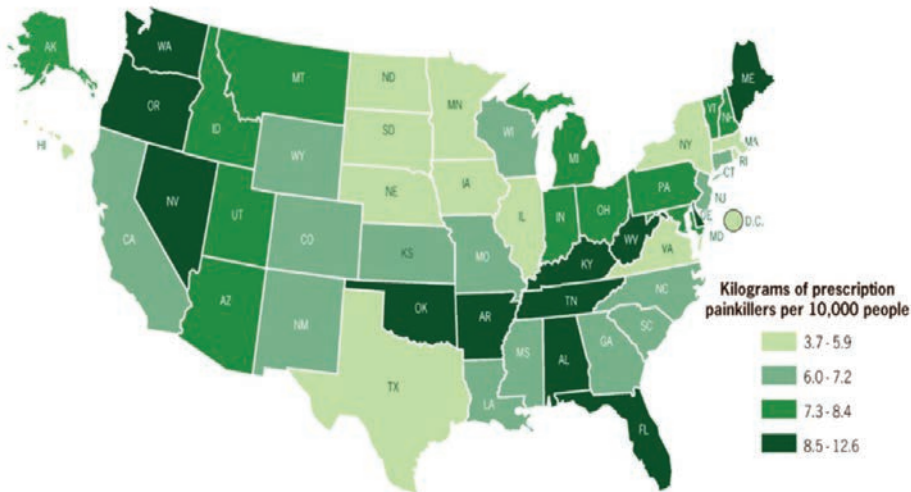




Community Health Department

Oregon, a state of 3,831,074 in 2010, had 6.37 percent of its inhabitants (244,039 people) using painkillers for nonmedical purposes. By contrast, Iowa (population 3,046,355) had the lowest rate of prescription drug abuse at 3.62 percent (110,278 residents).

Amount of prescription painkillers sold by state per 10,000 people (2010)



SOURCE: Automation of Reports and Consolidated Orders System (ARCOS) of the Drug Enforcement Administration (DEA), 2010

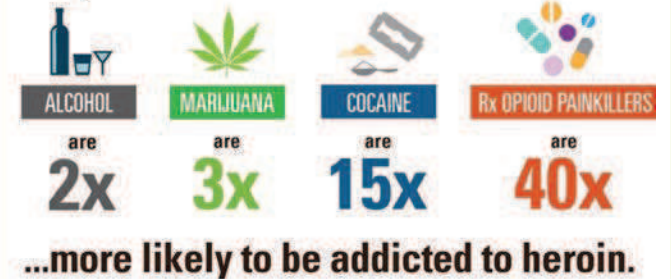
Heroin use is part of a larger substance abuse problem.

Nearly all people who used heroin also used at least 1 other drug.

Most used at least **3** other drugs.

Heroin is a highly addictive opioid drug with a high risk of overdose and **death** for users.

People who are addicted to...



SOURCE: National Survey on Drug Use and Health (NSDUH), 2011-2012

MEDICAL TRANSPORTATION

Cascade West Ride Line	866-724-2975
<p>Arranges Non-Emergency Medical Transport for Medicaid & OHP clients</p> <p>Schedule Medical Transport as soon as possible, it is preferred at least 1-business week in advance.</p> <p>After hour Non-Emergency transport available</p> <p>Limited availability</p>	(541)924-8738
Siletz Community Health Transportation	(541)444-9633
<p>For Siletz Tribal Members who need transportation to their medical, dental and/or mental health non-emergency appointments</p> <p>This transportation is last resort meaning the Siletz Tribal Member is unable to get transportation from family, friends or public transportation (for example Cascade West Ride Line)</p> <p>Schedule Transport as soon as possible. A minimum of 48-hours is required</p> <p>Limited availability</p>	



The CARE Program provides advocacy, direct and support services to victims

and survivors of domestic violence (DV), sexual assault (SA), dating violence and stalking.

We focus on providing culturally appropriate services and education to Native American survivors. We partner with other tribal programs, as well outside agencies in order to find the best options for services for survivors.

Some of our services include:

- Crisis response
- Safety planning
- Connecting with resources
- Facilitating support groups
- Education & awareness activities
- Training for Professionals
- Moral support
- Court accompaniment
- Direct client support

CARE Program services are strictly

CONFIDENTIAL

Office line:....(541)444-9680

24 Hour Hope Line:

(541)994-5959 • (800)841-8325

