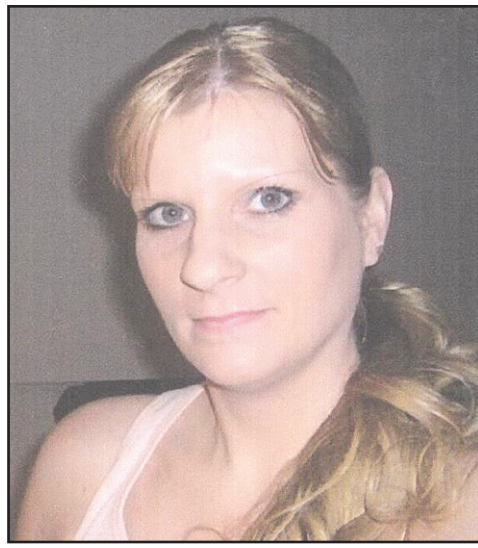




Happy 22nd Birthday, Dreonna! We're so proud of you and love you so very much!
Love, Mom and Dad



Happy 20th Birthday to our Princess Savannah Rae Worman. We love you very much.
Mom, Chad, Hayden, Booboo, Grandma D and Papa



Happy Birthday to Bobbi Lyn Rodriguez, #1 Mom of the Year! We love you so much now and forever.
Azlyn and Frede Rodriguez (smooches)



Happy 5th Birthday to my beautiful granddaughter, Zakhara. Hope you have the best birthday ever! Love, hugs and kisses, baby girl.
Love, Nana, Papa and your aunties Bianca, Vanessa, Isabella and Chloe



Little Miss Siletz Halli Lane-Skauge (right) rides in the Pi-Ume-Sha parade on June 25 with Miss Warm Springs Keeyana Yellowman.



Happy Birthday, Chris! Hope you have an awesome birthday.
Love, Aunt Laurie, Pedro, Bianca, Vanessa, Isabella, Chloe and all your family and friends

Most Often Requested Numbers

- Confederated Tribes of Siletz Indians – 800-922-1399
- Salem Area Office – 503-390-9494
- Salem Finance Office – 888-870-9051
- Portland Area Office – 503-238-1512
- Eugene Area Office – 541-484-4234
- Contract Health Services (CHS) – 800-628-5720
- Siletz Community Health Clinic – 800-648-0449
- Siletz Behavioral Health – 800-600-5599
- Chinook Winds Casino Resort – 888-244-6665
- Chemawa Health Clinic – 800-452-7823
- Bureau of Indian Affairs – 800-323-8517
- Website – ctsi.nsn.us

U.S. 20 construction closes road at Sheep Creek Bridge

SWEET HOME, Ore. – From Aug. 2 through the end of September, U.S. 20 will be closed at Sheep Creek Bridge for repairs to the bridge and abutments.

Located 26 miles east of Sweet Home, milepost 56.6, the bridge's eastern abutment rests on an active slide with earth movement measured at 6-7 inches a year. The bridge was built to move with the slide, but has reached the point that it must be replaced.

In 2015 during phase one of the two-part project, 50-foot steel piles were placed to redirect landslide activity away

from the bridge. Phase two is intended to stabilize the existing structure and eliminate further sliding.

The new bridge span and abutment will be built to ride on top of the slide if it keeps moving. This will make impact to the bridge more consistent and predictable, and therefore, more manageable.

Full closure of the highway will last for 6-8 weeks. The road will remain open between Sweet Home and the bridge on the west side and from Santiam Junction to the bridge from the east. Campgrounds and recreation areas will continue to be open and accessible.

Detour signs will be posted at various locations to direct travelers around the area via Highways 34, 22 and 126. There are no local detours.

The road closure will be completed by the end of September. Construction work surrounding the bridge, however, will continue through October.

For more information, including a detour map and videos on the project, visit oregon.gov/ODOT/HWY/REGION2/Pages/US-20-Sheep-Creek-Bridge-Phases-1-and-2-.aspx

Know Before You Go – For the latest road conditions, visit TripCheck.com.

Tribal RV parks have space available for you

Logan Road RV Park

This beautiful RV park has a free shuttle to Chinook Winds. Visit loganroadrvpark.com or call 877-LOGANRV.

Hee Hee Illahee RV Resort

This beautiful five-star RV resort is located in Salem. Visit heeheeillahee.com or call 877-564-7295.

Passages Policy

Submissions to Passages are limited to two 25-word items per person, plus one photo if desired. All birthday, anniversary and holiday wishes will appear in the Passages section.

Siletz News reserves the right to edit any submission for clarity and length. Not all submissions are guaranteed publication upon submission.

Please type or write legibly and submit via e-mail when possible.