

February USDA Distribution Dates

Siletz		Salem	
Monday, Feb. 7	9 a.m. – 3 p.m.	Tuesday, Feb. 22	1:30 p.m. – 7 p.m.
Tuesday, Feb. 8	9 a.m. – 3 p.m.	Wednesday Feb. 23	9 a.m. – 7 p.m.
Wednesday, Feb. 9	9 a.m. – 3 p.m.	Thursday Feb. 24	9 a.m. – 5 p.m.
Thursday, Feb. 10	9 a.m. – 3 p.m.		
Friday, Feb. 11	9 a.m. – 3 p.m.		

The USDA staff would like to thank Darcy Trego, Siletz Clinic diabetes coordinator, for supporting our Nutrition Education Program.

She came to the Siletz warehouse during January's distribution and prepared a wonderful buffalo burger stir-fry. Many of our clients enjoyed this and all comments from them were positive.



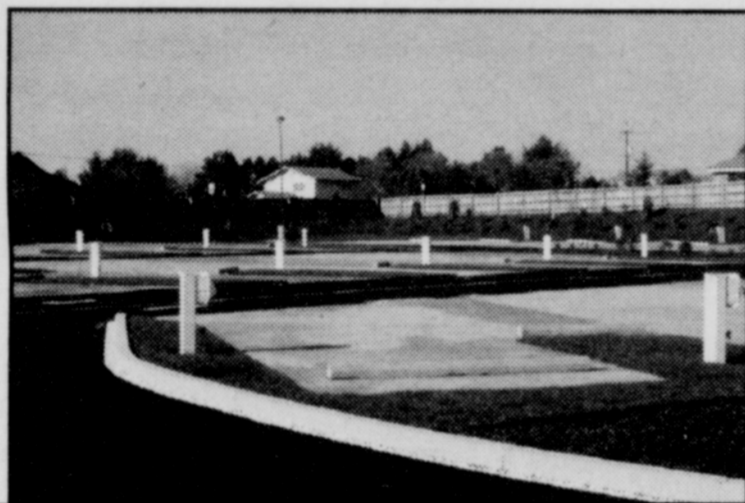
We also would like to compliment her for the educational handout that she put together, which included the recipe along with tips for healthy, thrifty meals. Happy Meals!

Attention Tribal Members: RV Park Special

Effective immediately, the Logan Road RV Park will be running a special for a limited time. Prices have been reduced to \$28-\$32, plus tax, per night. Additionally, RV association membership discounts may apply.

For more information or to make reservations go to

www.loganroadrvpark.com



Computer Applications Still Being Accepted

We are still accepting applications for a **limited number** of both desktop and laptop computers. Time is of the essence, however.

To be eligible for desktops:

- Must be enrolled Siletz Tribal member or have legal custody of enrolled Siletz Tribal members
- Must fill out an application (call Tina Retasket or Darlene Carkhuff to get one)
- Must provide verification of your residence through a utility bill in the tribal member's name and street address or official rental agreement (cannot accept a note from family or friends)
- For non-Siletz custodial parents – verification of legal custody

For laptops, the criteria is:

- Be an enrolled Siletz Tribal member
- Provide proof of residency (see item C at left)
- Provide proof of completion of two full-time terms (minimum 12 credit hours for undergraduate students; nine credit hours for graduate students) with a minimum 2.0 GPA
- Provide proof of being currently enrolled full-time in a higher education or AVT program

Please call Tina Retasket or Darlene Carkhuff at 1-800-922-1399 or 541-444-2532 for an application.

TLC Attitudes of Gratitude

At this writing, the TLC Christmas tree is down and all the tinsel has been removed so the fish restoration project can recycle the tree into healthy fish habitat. It feels good to reuse rather than trash usable items. This tree did not die in vain!

And, in further reference to the past holiday season, our "Santas" in the community were busy again! Sue Eatherly and Janet Comensky blessed us with toiletries and stocking stuffer items.

Mary Parker donated a set of dishes, while Stephanie and Casey King, former Siletz residents, provided microwave cook-and-store containers and a hand vac (very handy to clean under couch cushions).

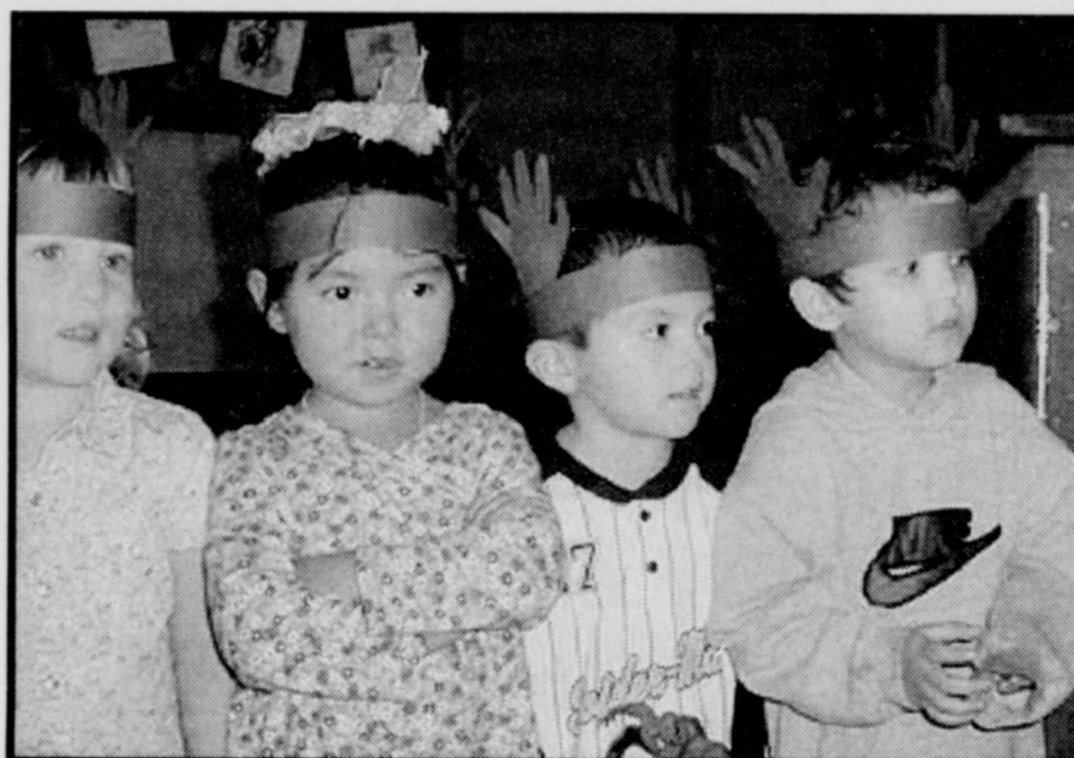
Quinn Murk, bless his heart, provided us with four more boxes of kin-

dling wood. Sure makes it easier for us to get a fire going!

Volunteers again, always, are blessings for which we are so thankful. During the past month, Joan Hartung, Denise Riding In, Carrie White, Alice McCain, Lisa Brown, and Jackie Ashley gave of their time to provide overnight emotional safety at the TLC. All it takes is the presence of someone who cares.

Thanks also to Selene Rilatos for her resident talking circles. We are grateful for our security officer including TLC on his rounds several times a night. And a special "thank you" to Public Works for the "fix-it" jobs they did for us.

When put together, all these "little" things translate to success in our program and service to clients. Thank you, Siletz community!



Highlights from Siletz Tribal Head Start

Above: Jenny, Jayden, Apolinar, and Willie

Below: Head Starters get ready to sing at the community Christmas party

