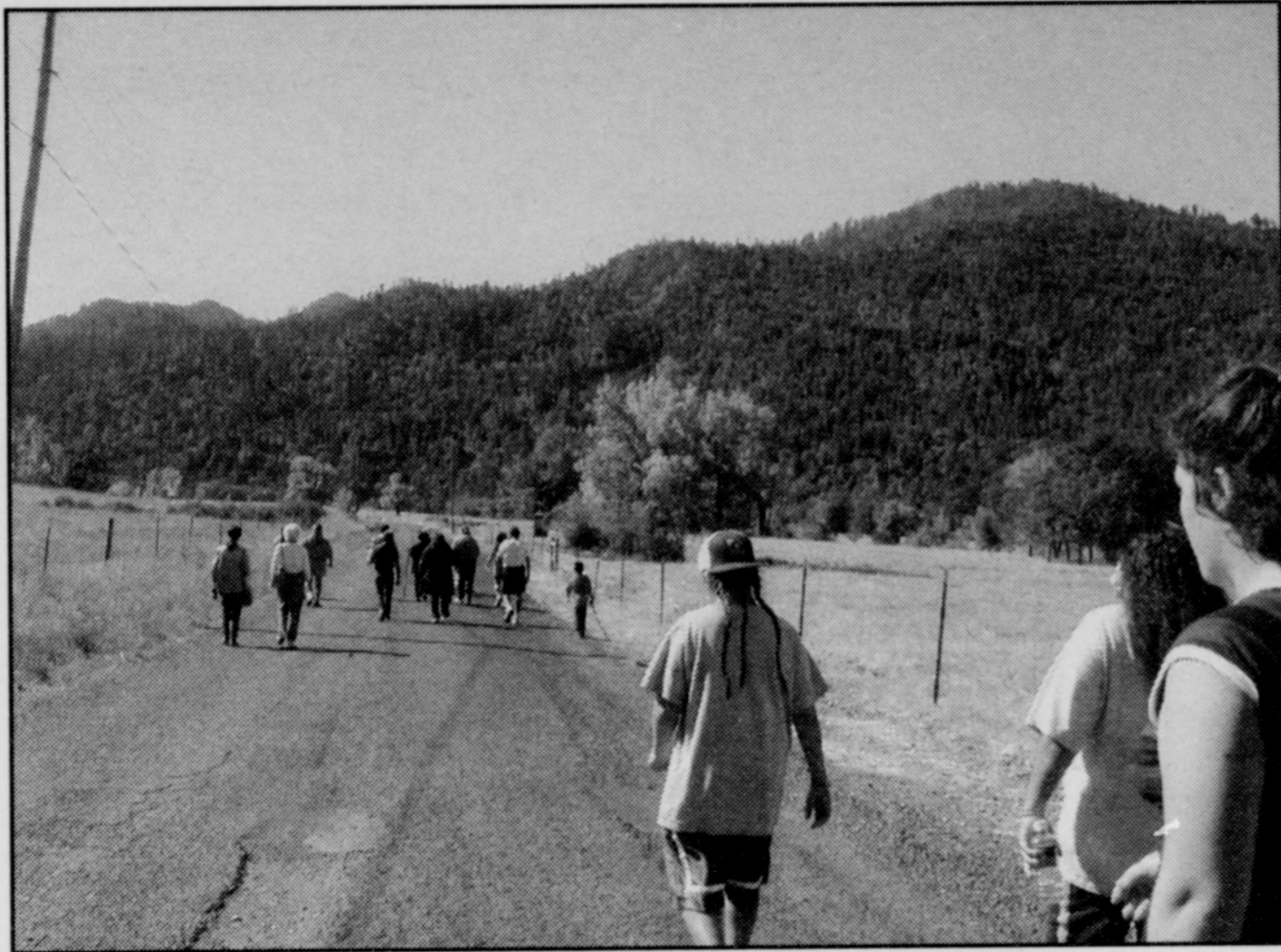


RUN TO THE ROGUE



Top left: One group watches as another group advances the eagle staff along the run.

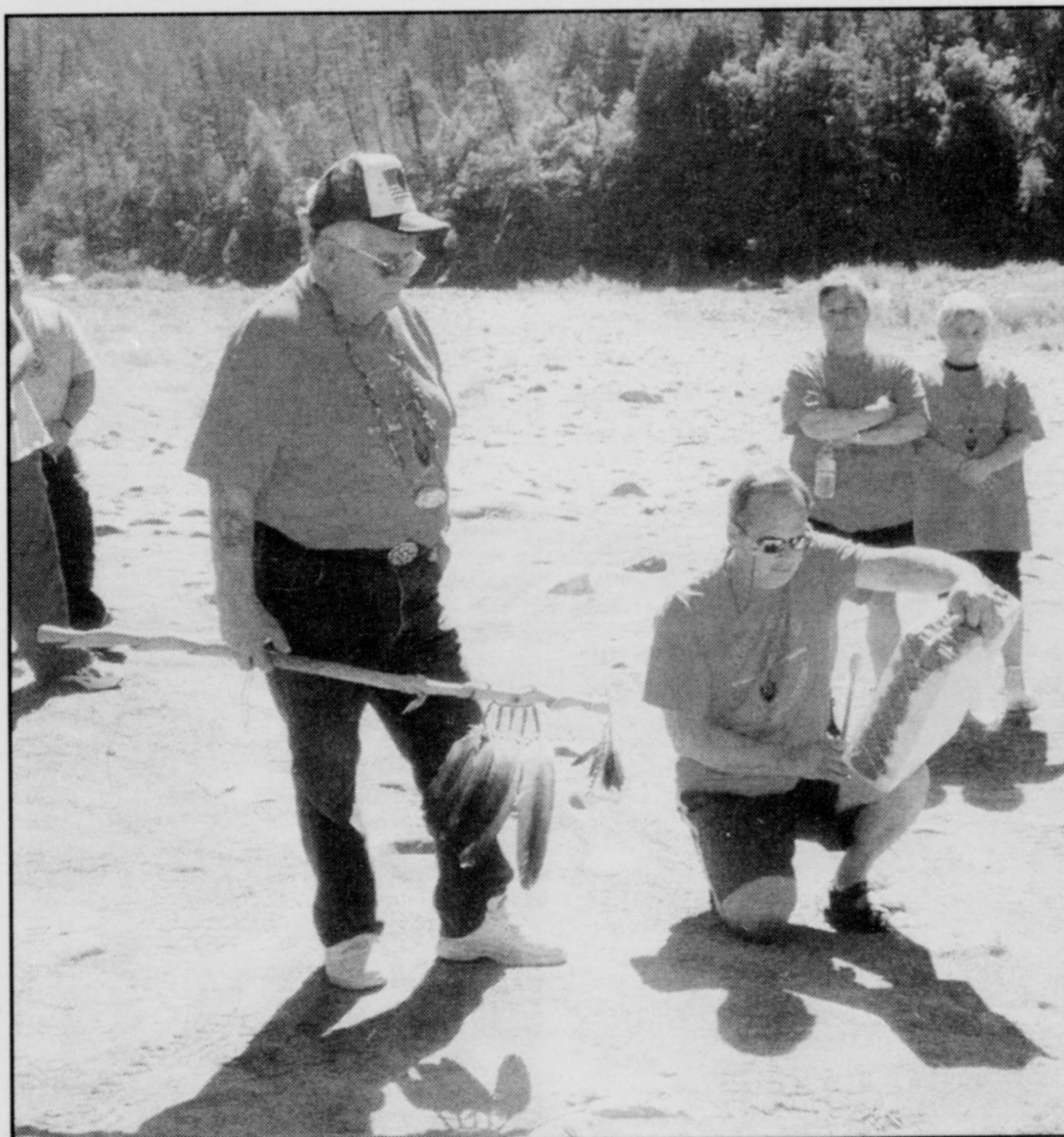
Above: Children participating in this year's event gather at the end of Oak Flats road.

Left: Runners receive a warm welcome in Langlois.

Below: Jasmine Whitehead and Chyann Payne hand the eagle staff off to Val Hibdon and Jaimee Crowe.

The annual Run to the Rogue commemorates the Siletz Tribal ancestors who were forcibly removed from their homeland in the Rogue River country and marched north to Siletz.

Each year the Siletz Tribal people participate in a relay run from Siletz to the Rogue River country. This is the closest we can come to our ancestors' experience on the journey from their homeland.



Ed Ben and Bud Lane lead the ceremony at the end of the run.

