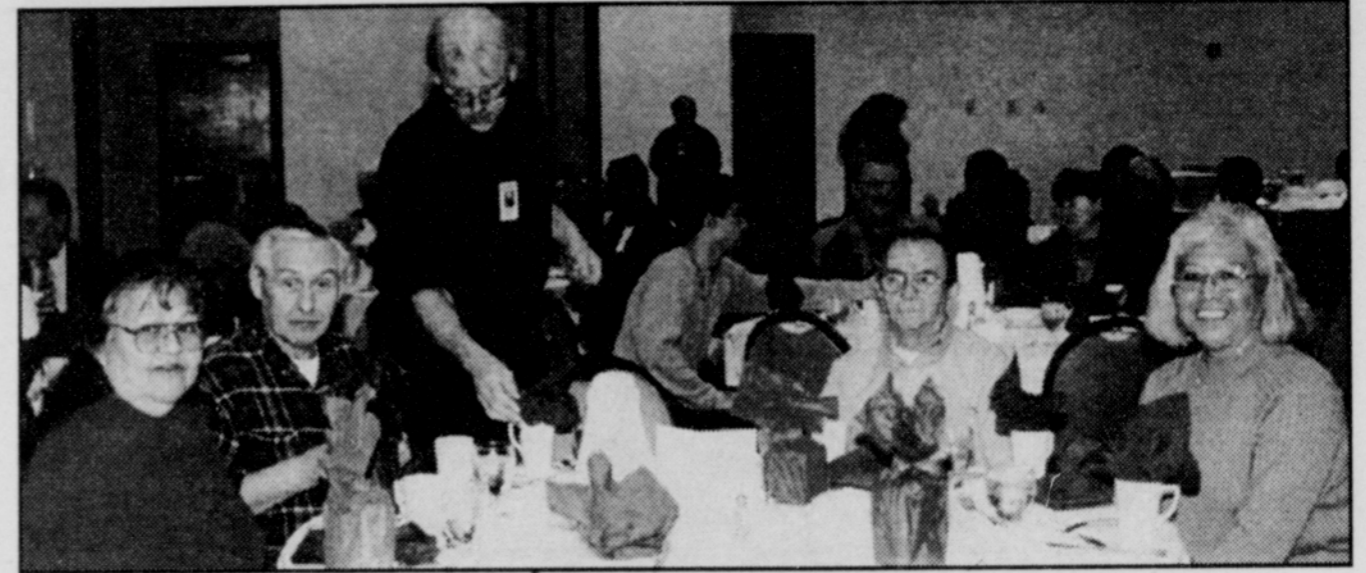


# TRIBAL COUNCIL TIMESHEETS

## Lillie Butler – 12/27/02-1/22/03

TC	Ind	Gmg	Tvl		
2.5	2.5			12/27	Packet
		7.5	2	12/30	Regulatory wkshp.
		2		12/31	Packet
2.5	2.5			1/2	Packet
2.5	2.5			1/3	Packet
		6		1/6	Packet
		5		1/7	Packet
2.5	2.5			1/8	Packet
		8	2	1/9	Regulatory wkshp.
		8.5	2	1/10	Special TC/BOD
		5.5	2	1/11	Special TC, gaming
2.5	2.5			1/13	Packets
		3.5	2	1/14	Sign Reg. checks, packets
3	3			1/15	Packets, pow-wow
2.5	2.5			1/16	Packets
3	3	2		1/17	Regular TC
3.25	3.25			1/18	Regular TC
		3.5	2	1/19	Athletic Comm., gaming
		5		1/20	Packets, Athletic Comm.
1	1	3		1/21	Packets, Athletic Comm.
		5.5	2	1/22	Regulatory Agency wkshp.



Rosemary Landis, Gene Landis, Reggie Butler Sr., and Lillie Butler enjoy the Superstar luncheon at Chinook Winds.

1	1	6		1/13	NWIHB – Auburn, WA, misc. phone calls
4.25	4.25			1/14	NWIHB
4	4			1/15	NWIHB
2	2	6		1/16	NWIHB
4.25	4.25	5		1/17	Regular TC, mtg. w/Lillie and Dave
1.25	1.25	5		1/21	Health Comm.
		8.5		1/22	CW Gaming, dinner w/mayor
2	2	2		1/23	Packets

## Reggie Butler, Sr. – 12/27/02-1/22/03

TC	Ind	Gmg	Tvl		
1.75	1.75			12/27	Packet
1.5	1.5			12/28	Packet
		7.5	2	12/30	Regulatory wkshp.
		4.5		1/2	Packets
2	2			1/3	Packet
2.75	2.75			1/6	Packet
2	2			1/7	Packet
		5		1/8	Packet
		8	2	1/9	Regulatory wkshp.
		8.5	2	1/10	Special TC/BOD
		5.5	2	1/11	Special TC/gaming
		5.5		1/13	Packets
2.5	2.5			1/14	Packets
2.25	2.25			1/15	Packets
2	2			1/16	Packets
4	4	2		1/17	Regular TC, packets
4.25	4.25			1/18	Regular TC, packets
2.5	2.5			1/20	Packets
		5		1/21	Packets
		5.5	2	1/22	Regulatory Agency wkshp.

## Mary A. "Dolly" Fisher – 12/30/02-1/24/03

TC	Ind	Gmg	Tvl		
.25	.25	7.5	2	12/30	Special TC w/Craig, gaming
2.25	2.25			12/31	Checks, docs, reading
2.5	2.5			1/2	Checks, TC business, docs
2	2			1/3	TC business, reading
		2.5		1/4	STGRA – reports
1.5	1.5			1/6	TC business, maintenance, housing
1	1	1		1/7	Docs, review minutes
1.75	1.75			1/8	Checks, docs, review minutes, CW financials
		8		1/9	Gaming wkshp.
1	1	4		1/10	Special TC, gaming
1.5	1.5		1	1/11	L. City
.75	.75			1/12	Mail and packet
.75	.75			1/13	Docs, other business
1.5	1.5	.75		1/14	Financials CW, docs, TC business
2.25	2.25			1/15	Checks, docs, phone, TC business
1.5	1.5			1/16	Docs, TC business
4	4			1/17	Regular TC
3.5	3.5			1/18	Regular TC
1	1	.75		1/19	Reading TC and CW
2	2			1/20	Reading and research
1.5	1.5			1/21	TC business, phone
2.5	2.5			1/22	Checks and docs, clinic interviews
2	2			1/23	TC business
2.5	2.5			1/24	TC business

## Jessie Davis – 12/27/02-1/23/03

TC	Ind	Gmg	Tvl		
1.25	1.25		3	12/27	Investment mtg.
1.5	1.5			12/28	Economic Development
.5	.5	7.5	3	12/30	Gaming wkshp., Special TC
2	2	2		1/2	Packets, phone calls
		1	3	1/3	Check signing, STGRA
2	2	4		1/6	Pd's for STGRA, TC reports
		8		1/7	Chapt. #10, pd's, prep for wkshp.
		6		1/8	STGRA personnel manual
		8	1.5	1/9	Gaming wkshp.
		8.5		1/10	Special TC, Gaming Board
.75	.75	4		1/11	Mtg. w/MMS, mtg. w/Trust for Pub. Lands

## David R. Hatch – 12/28/02-1/24/03

TC	Ind	Gmg	Tvl		
		7	5	12/28	Gaming mtg. in Lincoln City
.5	.5			1/7	Chemawa property discussion
1	1	1		1/8	TC, gaming packets
		7	5	1/10	Gaming mtg. in Lincoln City
2	2	2	3	1/11	Special TC in Lincoln City
			3	1/12	Return trip
2	2	2		1/16	Ecotrust mtg., packets