

NOTICES

Zoo Offers New Program for Home-Schooled Children

The Oregon Zoo has announced a new education program for home-schooled children age 6 and older. The second of two Home-School ZooSnooze programs is scheduled for March 6-7 from 5 p.m. to 9:30 a.m.

According to Rex Ettlin, the zoo's education program coordinator, home-schoolers will see the zoo in a whole new light – moonlight! Participants will enjoy a pizza dinner and go on a guided nighttime safari. The highlight of the evening will be a behind-the-scenes tour.

"ZooSnooze promises to be a great educational adventure for home-schooled kids," says Ettlin, "We're teaching kids about the importance of animals and conservation, while creating great childhood memories."

During ZooSnooze, home-schoolers will come face to face with insects and reptiles, and also will enjoy some fun hands-on opportunities with certain animals. In addition, kids will make an enrichment item (animal toy) and later watch the animal play and interact with it, go behind the scenes to see the zoo's popular birds of prey, and on the next day enjoy a continental breakfast. At the conclusion of the program, home-schoolers can explore the zoo on their own.

"Kids will long remember how they learned all about wildlife and saw many rare animals under the cloak of darkness, one of their liveliest times," Ettlin adds.

Cost for Home-School ZooSnooze is \$40 person for youth or adult. Children may not attend without a registered adult. Up to five children may accompany one adult.

Call 503-220-2781 or e-mail moddet@metro.dst.or.us to register.

Other Programs

The Oregon Zoo has several other programs for home-schooled students. Educational programs give students attending school at home the opportunity to explore the zoo's animals and the habitats in which they live.

Proposals Wanted for Tsunami Hazard Sign

Tsunami Hazard Interpretive Sign for Siletz Bay: Native Legend Format

Objective: Create a graphic for a native legend tsunami interpretive sign for Siletz Bay that takes into consideration Native oral histories/legends and scientific information. The educational sign should be both scientifically accurate and dramatic, so more people will be attracted to read the sign.

Description: The graphic should include the following:

1. Text about the event should be concise (owing to space limitations) and written like a good story. It should incorporate:
 - a. date and time of event (9 p.m. on Jan. 26, 1700)
 - b. geologic evidence (tsunami sand layers covering buried soils in the marshes of Siletz Bay)
 - c. estimated height (~30-35 feet)
 - d. quotes from oral histories/legends if available; description of what it probably felt like to go through a big earthquake with rolling motions lasting four minutes that were strong enough to knock you off your feet; then, 20 minutes later, a surge of ice cold sea water flooding into the village in the darkness faster than people could run away. The description should include the horror of watching loved ones sucked out to sea as the wave withdrew; then more people lost when additional waves struck over the next several hours.
2. Drawings
 - a. Accurate depiction of Siletz Bay and village at Taft (and possibly Salishan Spit)
 - b. Accurate depiction of tsunami (surge of water carrying debris, like logs and splintered longhouses)

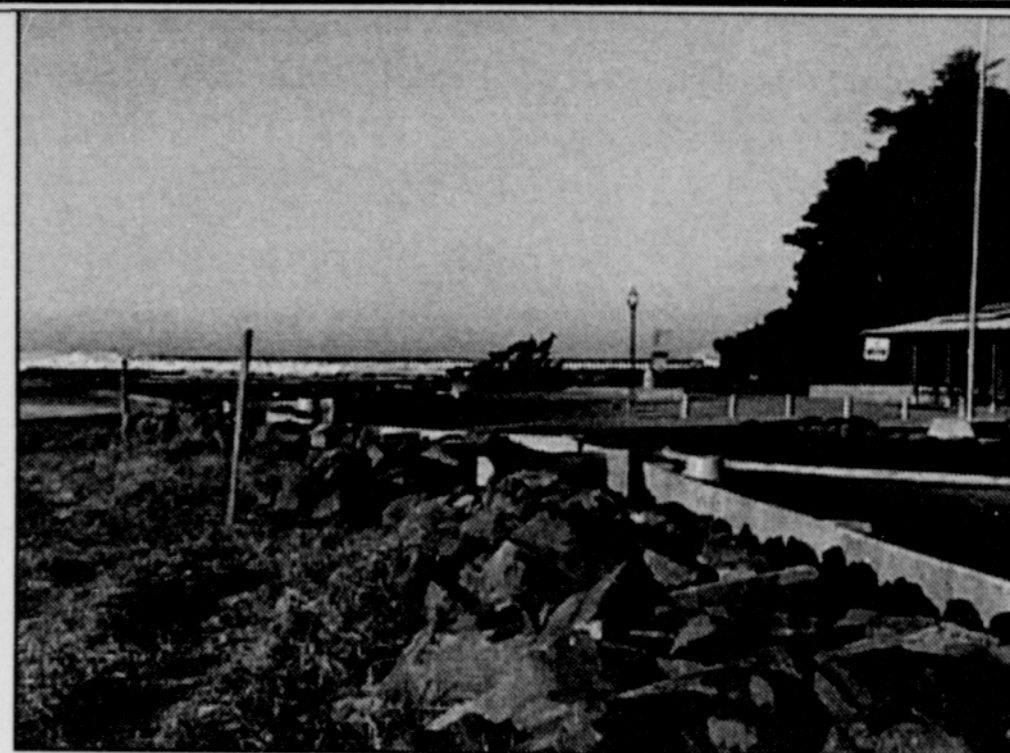
"Education is our number one priority at the Oregon Zoo," says Roger Yerke, education programs manager. "Through a variety of programs throughout the year, we educate more than 188,000 students, introducing them to seldom-seen animals and educating them on the importance of conservation."

The zoo offers the following educational programs to home-schooled students:

- Discovery boxes filled with insects, magnifying glasses, and educational literature
- Curriculum guides (downloadable from www.oregonzoo.org) to use

before, during, or after a trip to the zoo

- ZooSnooze overnights with hands-on learning activities and behind-the-scenes tours
- Internships for teen-agers that offer career exploration opportunities
- ZooTeens summer volunteer program (applications are now available)
- Day camps during the summer, winter, and spring school breaks
- On-line opportunities include the zoo's Web site, an excellent source for homework and school reports. This information also can be obtained by calling the Animal Information Line at 503-226-1561, then press 2.



The turnaround in the Taft area of Lincoln City

- c. Accurate depiction of people and their response to tsunami (people running away but looking over their shoulders; some standing in shock before the tsunami surge)
- d. Black and white or color drawings are acceptable; either format can be accommodated

Site Visit: A site visit is recommended; the photo above is for reference.

Budget: \$2,000

Applicant profile: Open to all

Application: Submit a sketch (11x17) or sketches, along with a letter discussing your interest in and approach to the project, to George Priest, DOGAMI, 313 SW 2nd, Suite D, Newport, OR 97365.

Application deadline: April 15, 2003. A committee will evaluate and make a choice from submitted proposals. Finalists may be asked to present their proposals and answer questions.

If you have any questions, the primary contact is Mark Darienzo at 503-378-2911, ext. 237, or mdarien@oem.state.or.us.

For more information on the zoo's education programs for students or to reserve a kit, call 503-220-2781.

The Oregon Zoo, located five minutes from downtown Portland just off Highway 26, is open from 9 a.m. to 4 p.m. through March 31. The zoo also is on the MAX light rail line.

General admission is \$8 (12-64), seniors \$6.50 (65+), children \$5 (3-11), and under 3 are free. For additional information, please visit the zoo's Web site at www.oregonzoo.org or call 503-226-1561.

