

TRIBAL COUNCIL TIMESHEETS

Rosemary B. Landis – 7/9/02-7/30/02

| TC | Ind | Gmg | Tvl | | |
|-------|-------|-----|-----|---------|--|
| 4.25 | 4 | 1 | 6.5 | 7/9 | PDX interviews, Eugene comm., read packets |
| .75 | .75 | 6.5 | 7 | 7/11-12 | Siletz community, Special TC, BOD |
| 1 | 1 | | 2 | 7/15 | PDX community mtg. |
| 1.75 | 1.75 | 1 | 3.5 | 7/16 | Salem community, read packet |
| 11.25 | 11.5 | | 7.5 | 7/17-21 | GR/TC mtg., mill study, TC, BOD, travel |
| 10.25 | 10.25 | 1 | 14 | 7/22-24 | STBC reorg, NAHASDA, read packets |
| 2.25 | 2.25 | 1 | 7 | 7/25 | Superstar, Restoration mtg., Culture Camp |
| 1 | 1 | 1 | | 7/30 | Read packets |

JoAnn Miller – 7/2/02-7/25/02

| TC | Ind | Gmg | Tvl | | |
|------|------|-----|-----|------|-----------------------------------|
| 1.25 | 1.25 | | | 7/2 | Packet, sign checks |
| 1 | 1 | | | 7/5 | Review packets |
| 2.25 | 2.25 | | | 7/8 | ESP interview, Incentive luncheon |
| 2.5 | 2.5 | | | 7/9 | Education Comm., reading |
| 2 | 2 | | | 7/10 | Sign checks, ICW |
| 2 | 2 | | | 7/11 | Packets, community mtg. |
| | | 7 | 2 | 7/12 | S/T/C and Gaming Board |
| 1 | 1 | | | 7/15 | Pow-Wow mtg. |
| 1 | 1 | | | 7/16 | Sign checks |
| 1.5 | 1.5 | | 2 | 7/17 | Meet w/G.R. |
| 2.5 | 2.5 | | 2 | 7/18 | Planning mtg. |
| 4 | 4 | | | 7/19 | Regular TC |
| 3.5 | 3.5 | | | 7/20 | Regular TC |
| 1.5 | 1.5 | | 2 | 7/22 | Economic development mtg. |
| 2 | 2 | | | 7/23 | Culture Camp, sign |
| 3 | 3 | | | 7/25 | Culture Camp |

Fort, con't from page 1

known as the Siletz blockhouse. Fort Hoskins is the first of the three to be developed into a park site.

The Hoskins/Kings Valley area originally belonged to the Luckiamute band of the Kalapuya Indians, who ceded it to the United States under the Willamette Valley Treaty of 1855. Benton County purchased the main part of the original fort reserve with the intent of creating a historic park. The fort is part of the Siletz Tribe's hunting and gathering areas recognized under agreement with the state.

Robert Kentta, Siletz Tribal member and cultural resources director, has been involved with the development of this site since 1994. As a member of the Fort Hoskins Citizens Advisory Committee, he most recently authored and helped place the three interpretive panels that focus on local Indian and reservation history.

When asked about the importance of the park and the upcoming grand opening, Robert said, "This is an important part of our tribal history and the history of the settlement of Western Oregon. Benton County has solicited our input from the start, so that our perspective could be accurately represented in the interpretation of the site. I hope that all tribal members will consider attending the grand opening to see the results and to show our interest and appreciation for being included in the planning process."

Directions to Fort Hoskins are as follows:

≠ From I-5: Take exit 228 to Corvallis; turn left on Fourth Street in downtown Corvallis. Follow Highway 20/34 signs to Philomath and Newport; after Philomath, turn right on Highway 223 to Kings Valley. Fort Hoskins signs will direct you to the park.

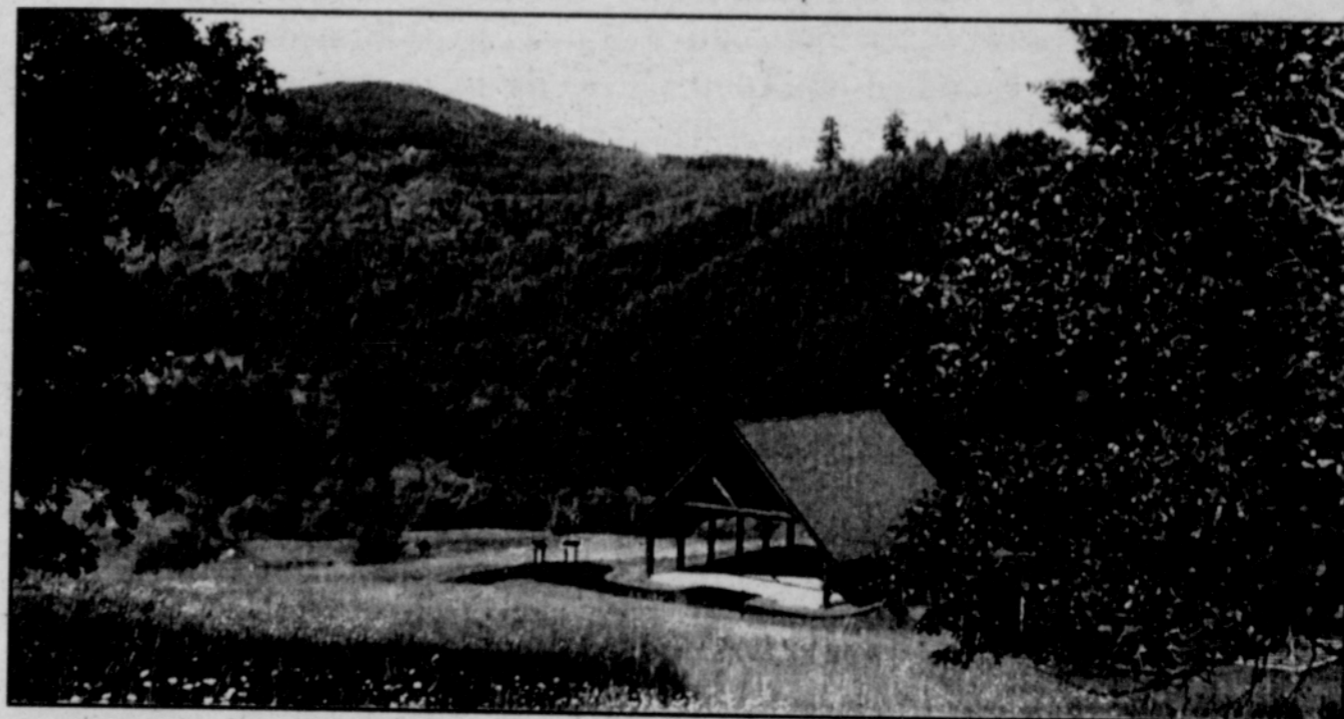
≠ From Highway 101: In Newport, take Highway 20 toward Corvallis. Turn left onto Highway 223 to Kings Valley. Fort Hoskins signs will direct you to the park.



Jane John (l), Dave Hatch, Rosemary Landis, Delores Pigsley, and Jennifer Easter, Jr. Miss Siletz, await grand entry at the Nesika Illahee Pow-Wow.

Delores Pigsley – 7/1/02-7/26/02

| TC | Ind | Gmg | Tvl | | |
|------|------|-----|------|------|--|
| 3.25 | 3.25 | | | 7/1 | Reports, calls, mail |
| | | | 9.5 | 7/2 | Leave for Wash., D.C., White House |
| 1.5 | 1.5 | | 11 | 7/3 | Reception and return |
| | | 1 | | 7/5 | Agenda prep |
| 2 | 2 | 1 | | 7/9 | Read packets, mail |
| 4 | 4 | | | 7/10 | Reports, calls, agenda items |
| 4 | 4 | | | 7/11 | Agenda prep, agenda items, mail |
| | | 7 | 2.5 | 7/12 | Gaming Board – L. City |
| 1.5 | 1.5 | | | 7/14 | Mail |
| 1 | 1 | 1 | | 7/15 | Gaming admin, calls, mail |
| 3 | 3 | 2 | | 7/16 | Agenda items, reading, prep for TC |
| 2.25 | 2.25 | | 2.5 | 7/17 | Mtg. w/Grand Ronde, prep for TC |
| 2.75 | 2.75 | | 1.25 | 7/18 | Econ. development wkshp. – L. City |
| 4 | 4 | | 1.5 | 7/19 | Regular TC |
| 3.5 | 3.5 | | 2 | 7/20 | Regular TC |
| 1 | 1 | | | 7/21 | Agenda items, read packets |
| 1.75 | 1.75 | 1.5 | 2.5 | 7/22 | Econ. dev. mtg., gaming, admin |
| 3.5 | 3.5 | 1 | | 7/23 | Mail, calls, agenda items, gaming, admin |
| 1.5 | 1.5 | | 2.5 | 7/24 | Calls, mail, casino event |
| 3.5 | 3.5 | 1 | 4 | 7/25 | Casino luncheon, Restoration Comm., reports, admin |
| 1 | 1 | | 2.5 | 7/26 | Investment Comm. – L. City |



Picnic shelter at Fort Hoskins Historical Park