

OR. COLL.  
E  
78  
.06  
9523  
v. 30  
no. 7  
July 2002

# SILETZ NEWS

Monthly publication by the Confederated Tribes of Siletz Indians

Vol. 30, No. 7, July 2002



## Tribal Member Input Needed on 20-Year Plan

All tribal members and staff are invited to attend community meetings to review the tribal "20-Year Plan for Economic Growth."

The tribal Planning department, along with the members of the Tribal Council, will hold a series of community meetings at each area office this month. The purpose of the meetings is to gain tribal member input on the proposed 20-year plan for the Confederated Tribes of Siletz Indians of Oregon.

Included in this plan are considerations of land acquisitions, resource development, and economic and business enterprise development, while maintaining the cultural and programmatic needs of the members.

"It's extremely important that all tribal members have an opportunity to provide input into this planning document," says Dale Hile, tribal planner. The 20-year plan was presented to the Tribal Council at an all-day planning seminar on June 6.

The time and location for each community meeting are as follows. Light refreshments will be available.

- Eugene Area Office – July 9  
6 p.m. to 8 p.m.
- Siletz Tribal Community Center –  
July 11, 6 p.m. to 8 p.m.
- Portland Area Office – July 15  
6 p.m. to 8 p.m.
- Salem Area Office – July 16  
6 p.m. to 8 p.m.

## Sherman to Give House to Tribe

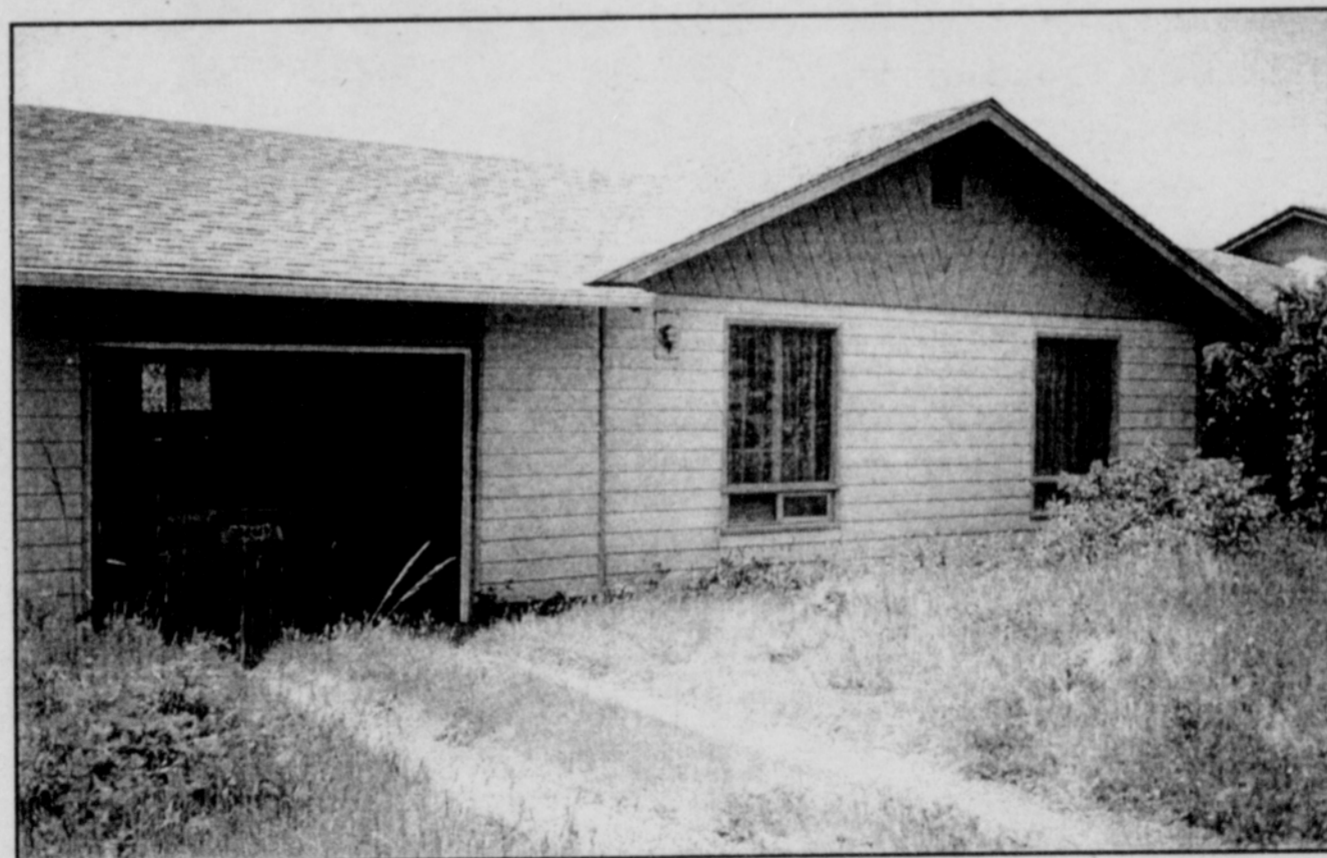
*"After I'd been here awhile, I began to read news items about the (Siletz) tribe. I realized this house was on part of the original reservation. Since I don't have any children or close family, I'm returning what rightfully belongs to the tribe."*

That is how John Sherman describes his decision to include the Confederated Tribes of Siletz Indians of Oregon in his living trust and to give his house and property to the tribe upon his death. He hopes to set a precedent for others who may find themselves in a similar situation.

His two-bedroom, 800-square-foot house lies on about a quarter acre of land near Beverly Beach, just north of Newport, Ore., on the Central Oregon coast. It has a bit of an ocean view and is surrounded by lots of natural vegetation, plus the apple, red cedar, and Sitka spruce trees that Sherman planted.

Sherman's interest in Indian affairs started when he was in the service. He met an Oglala Lakota tribal member from the Pine Ridge Reservation and his interest in things related to American Indians took off. He's been a long-time contributor to the Oglala Lakota College in Kyle, S.D., and the Native American Rights Fund in Boulder, Colo.

In addition to donating his property to the Siletz Tribe, Sherman plans to give his approximately 2,000 books to the Siletz Library and a large number of videotapes to the Newport Library. Many of his videotapes are from the 1930s and '40s, including some silent movies. He also has several foreign films.



*John Sherman receives a Siletz Tribal blanket.*

Many of his books are about American Indians and indigenous people in other parts of the world, including Australia and South Africa.

Sherman has lived in Oregon since 1990, where he moved after living all over the East Coast. "I've always lived near an ocean and had made several trips out here," he said. "The coast in Oregon is mostly small towns and I wanted to get away from large cities. I like privacy and this area is quiet."

*John Sherman's house, which he is donating to the Siletz Tribe through a living trust.*

### What's Inside

Letters to the Editor	2
Chairman's Report	3
Tribal Program News	4
Tribal Member News	8
Missing Moccasins	12
Notices	13
Tribal Council Timesheets	16
Siletz Clinic	18
Chinook Winds	19
Passages	21

Siletz News  
Confederated Tribes of Siletz Indians  
P.O. Box 549  
Siletz, OR 97380

**Delores Pigsley, Tribal Chairman**  
**Brenda Bremner, General Manager**  
**and Editor-in-Chief**

University of Oregon Library  
Received on: 07-09-02  
Siletz news  
1200 University of Oregon  
Eugene, OR 97403

**PRESORTED**  
**FIRST CLASS**  
**U.S. POSTAGE**  
**PAID**  
**SILETZ, OR**  
**97380**  
**PERMIT NO. 2**