

TRIBAL PROGRAM NEWS

USDA Distribution for September

Siletz

Tuesday, Sept. 5 9 a.m. – 3 p.m.
Wednesday, Sept. 6 9 a.m. – 3 p.m.
Thursday, Sept. 7 9 a.m. – 3 p.m.

Salem

Monday, Sept. 18 4 p.m. – 7 p.m.
Tuesday, Sept. 19 9 a.m. – 7 p.m.
Wednesday, Sept. 20 9 a.m. – 5 p.m.

This was a busy month for USDA. We would like to thank the following people who helped at our warehouse in Salem. We would like to thank Max Hoover, Larry Russell, Santiago Morales, Justin Hoover, and Calvin Hoover for their time and energy on the hot days in Salem. Thanks a lot, guys! We would also like to thank Janice Lane for getting us the help we need in Salem. Thanks Janice – keep up the great work!

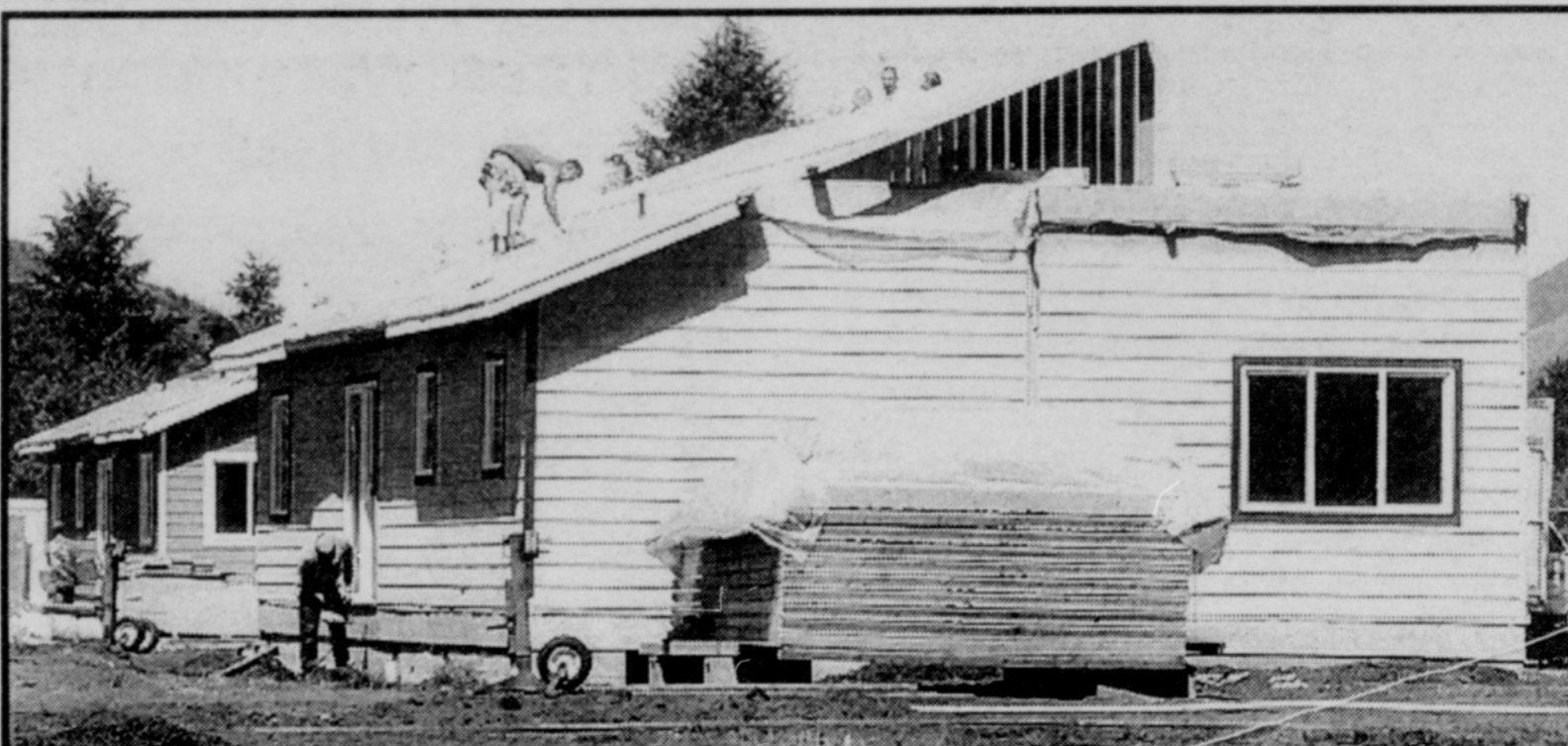


Courtesy Requested at Tribal Offices

Tribal clients and visitors are reminded that when they are seeking services or requesting information at tribal offices, they need to remain courteous to tribal staff at all times.

Recently, there have been several incidents where tribal member clients behaved in a manner that was threatening and abusive. Tribal staff operates under a code of conduct requiring courtesy toward others, and this same code of conduct is expected of tribal member clients.

Anyone failing to conduct themselves in a proper manner may be banned from tribal offices and services until they can comply with this expectation.



Foundations continue to be built and houses continue to arrive at the Dickenson property on the west end of Siletz. Modern Building Systems Inc. in Aumsville is constructing 20 modular homes for the Siletz Indian Housing Authority tribal housing project. Tribal members should begin occupying the homes in the next several months.



LCSD to Conduct Student Survey

During the week of Oct. 2-6, the Lincoln County School District will conduct a very important study on the needs, attitudes, and behaviors of students in grades six through 12. This is being done in collaboration with the Lincoln Commission on Children and Families.

The survey is titled Search Institute Profiles of Student Life: Attitudes and Behaviors. Most people refer to it as the "Assets Survey." It will provide schools and the community with a wide range of information, such as how students spend their time, their perceptions of school and community life, and their participation in risk-taking/self-destructive behaviors. Survey results will be used to help with community planning for services and activities to support our youth.

By answering the survey, Lincoln County youth will have a direct voice in community planning. The results are for use in Lincoln County and not part of any other national or statewide survey.

In order for your child to participate, you must sign and return the consent form your child will bring home after school starts. If no consent form is received, your child cannot participate in the survey.

If you have any questions about the survey, contact Jill Dale, Lincoln Commission on Children and Families, at 541-265-4114, or in North Lincoln County at 541-765-2177, ext. 4114.