

Snively's mural, a year in the making, unveils in Pauling

• Geology department illustrates 570 million years of dirt

JEREMY STALLWOOD
Feature Editor

A pair of enthusiastic Art and Science Departments mounted a new geology mural in the biology hall of the Pauling Center last Friday, Jan. 8.

"I've been hearing about it for months," Joan Harrison, science lab manager, said. "It's nothing like I imagined."

The official presentation of the mural will be conducted with a slide show by Physical Science Instructor John Snively on Thursday, Jan. 14 at noon in Pauling 101.

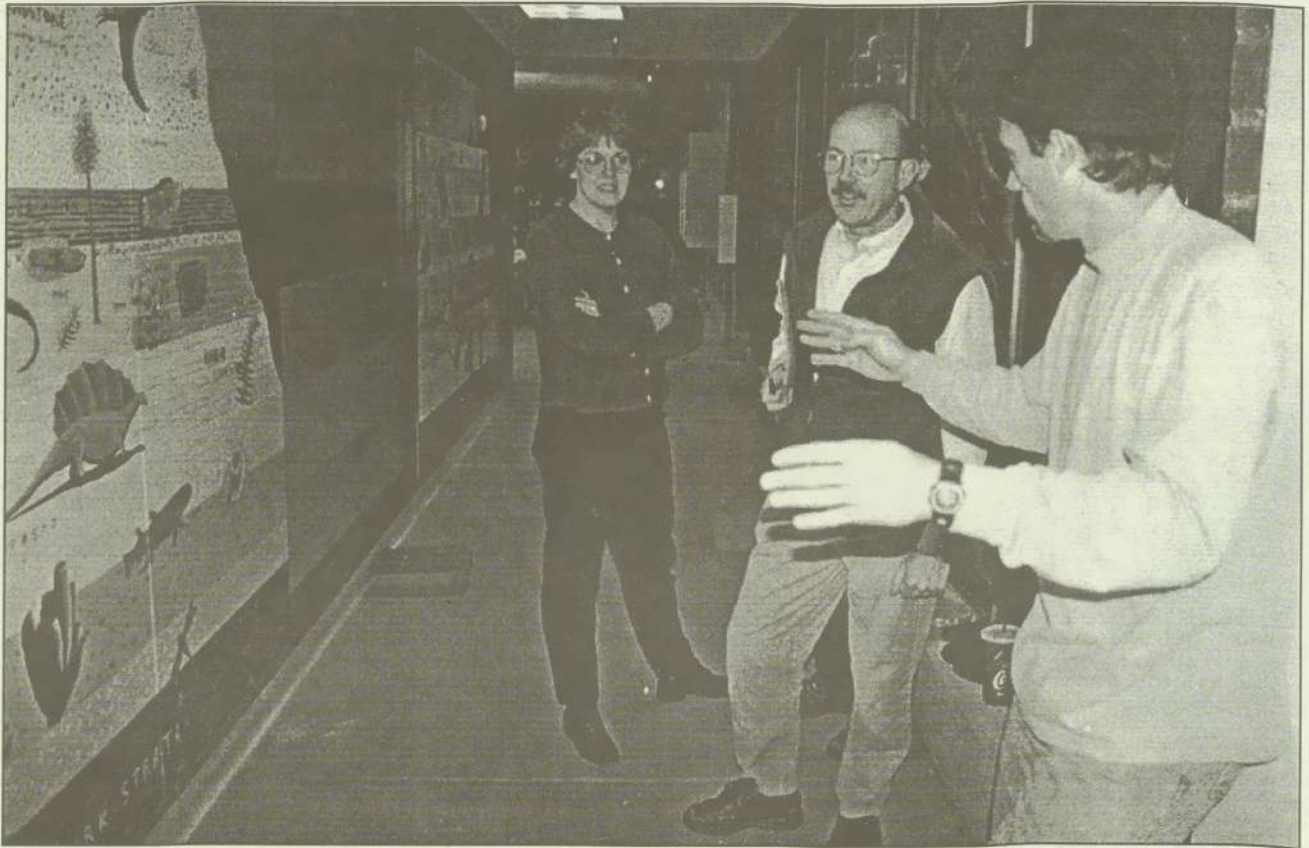
A year ago, Snively had a vision, an idea that would benefit students. The mural will be used as a learning tool for the Science Department.

Real rock samples as well as animal fossils are embedded in the mural, corresponding to the proper layer of sediment. The mural is a geological timeline spanning 570 million years.

The mural is divided into three sections, or levels. The first, depicting the Grand Canyon, represents the Earth's deepest layers of rock. The middle panels are of what lays exposed in the Zion National Park, and the last set of panels represent the Bryce Canyon whose layers of sediment are those that are on the top.

Art students who deserve recognition for their work include Nic Delgado, Diane Gauthier, Lauren Robertson, Wanda Robertson and Steve Wilson.

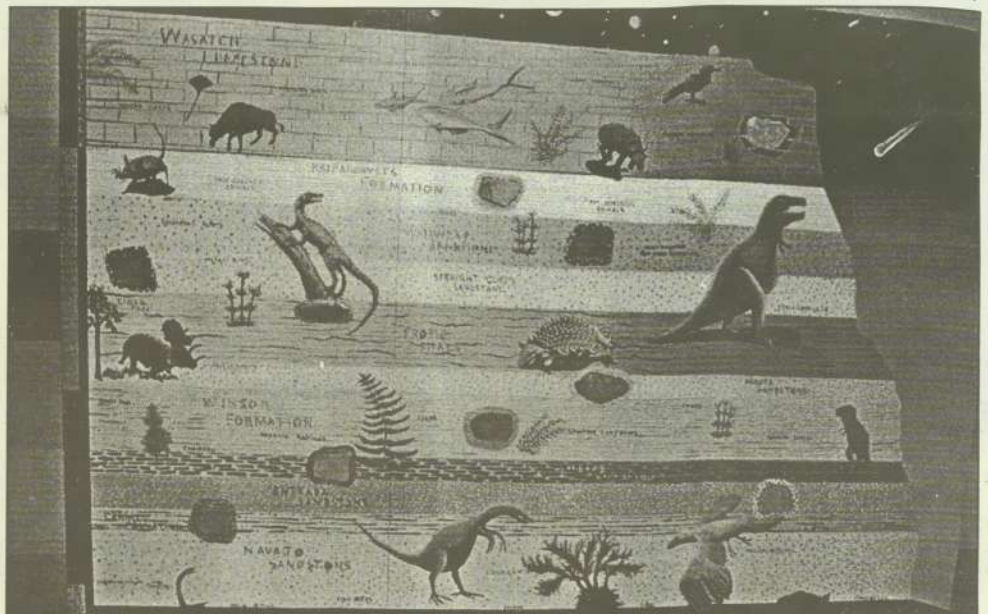
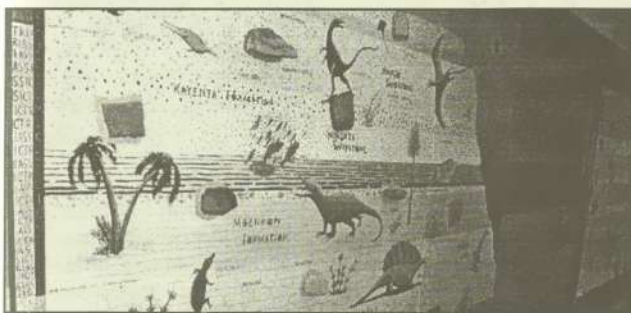
The mural was funded by the College Foundation.



Diane Gauthier, John Snively and David Anderson eyeball the marvelous mural painted by students from the art department.

PHOTOS BY TIMOTHY A. BELL / Clackamas Print

Embedded in the proper layers, plants and animals correspond to their time period. The mural will be used as a learning and teaching tool for the Science Department for many years to come.



Students offered exchange of language, culture

SALENA DE LA CRUZ
Staff Writer

Spanish speaking students studying English and English speaking students studying Spanish have an opportunity to work together in a new program called Conversation Partners.

Next Tuesday, Jan. 19 at 6:30 p.m. in room 109 at the Harmony Center in Milwaukie will be an orientation meeting for interested participants. Kathleen Fallon, program coordinator, would like students to call ahead so that she may pair students evenly. Individuals will work together in pairs with an assigned partner for one hour per week at the students' convenience.

"Students can create their own

schedule with their partner," said Fallon.

The program was designed to help students and staff practice language and conversation skills while getting to know someone from another culture. One of the goals of the program, according to Fallon, is to build lasting friendships through language and culture.

Bi-lingual conversation guides will be available for the partners to use as a starting point. Bi-lingual games and books will be available on a check-out basis for participants as well.

To register your name and language, contact Rosa Hiltz, ESL secretary at the Harmony Center, at ext. 3117 or contact the ESL department at ext. 2503.

Clackamas Writers' Club sponsors writing competition

JEREMY STALLWOOD
Feature Editor

The Clackamas Writers' Club, advised by English Instructor Allen Widerburg, is sponsoring a writing contest; the deadline is Wednesday, Feb. 17.

Students and staff are welcome to submit fiction, poetry and creative non-fiction with no limit on length to Widerburg in S124. There will be cash awards for winners in the competition.

The story or poem itself should not contain any obvious information identifying the writer. The judges will read

entries and their decisions will be based solely on the quality of the writing.

It is very important to submit four copies of each entry and to include an IBM-compatible 3.5" disk containing the submission.

All entries to the Writers' Club contest will be considered for publication in the *Synesthesia*, the on-campus literary magazine which will be published in the Spring.

Again, deadline is Wednesday, Feb. 17. Return entries to Allen Widerburg in S124, or contact him at ext. 2359.

Format for submissions should appear as follows:

COVER PAGE

Title
Category
Name
SSN
Address
Phone #

ENTRY

Title
SSN

XXXXXXXXXXXXX
XXXXXXXXXXXXX
XXXXXXXXXXXXX
XXXXXXXXXXXXX