

# Pet peeves: littering, disrespect

**CHRISTINA MUELLER**  
Co-Editor-in-Chief



*I am disgusted with the level of respect students have for our campus.*

**Christina Mueller**  
Co-Editor-in-Chief

Everyone has pet peeves but rarely does anyone do anything about them.

My biggest pet peeve at Clackamas is disrespect. Most classes let out at ten minutes till the hour, and it drives me nuts when students start rattling their bags and papers at a quarter till. Our instructors have a job to do, and we have a job to learn. We should be taking every minute of class time we can get.

Even when the instructor doesn't finish on time and it's ten minutes till the hour it's disrespectful to the instructor and other students for a person to get up and leave. I know they may have a class to get to, but in most cases it doesn't take ten minutes to walk to any of the four immediate buildings.

Almost every day I walk out of my

class at noon and down the McLoughlin Hall stairway. Swerving all over the steps to avoid the splats of chew spit, I wonder how anyone can be so disrespectful of our college and of our custodians. Someone has to clean that up eventually.

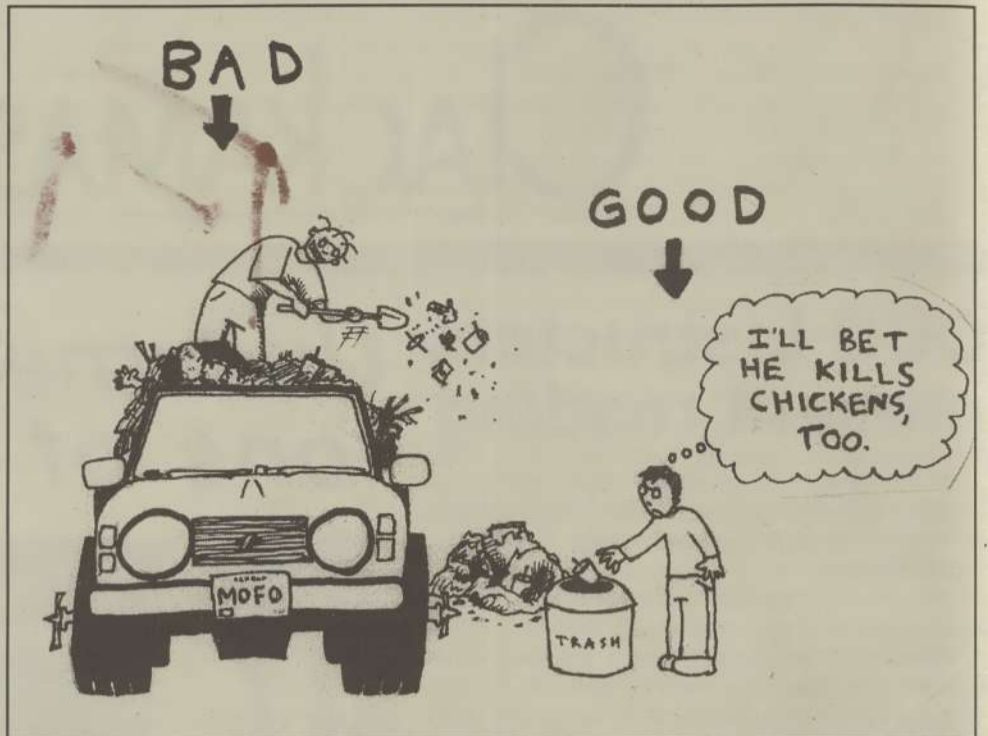
Now let's talk about littering. How old are you? Honestly, is it that hard to walk to a garbage can and simply place the article of waste into the receptacle? Apparently, some think it is.

While someone I knew was walking down the sidewalk in front of Barlow Hall recently, someone walking ahead unlatched their lid from their drink cup and threw the contents of the cup, straw and all, into the lawn. And there was a garbage can within five feet of them.

Just a few days ago I was sitting in the Learning Resource Center trying to find something slightly more interesting than the video I was watching. To my surprise I found graffiti on the TV and the side of the study carrel. Part of our tuition as well as taxpayers money pays for things like that, we partially own those things, and students are destroying them.

I just can't seem to grasp why some students are so disrespectful. Students who are on campus should want to be here. If they don't want to be here then it might be a good idea for them to not enroll in classes. Not to mention they'll save quite a bit of money.

I am disgusted with the level of re-



spect students have for our campus. Many people have worked hard to make it a nice place to spend time. If you're disgusted too, don't just sit back and watch these things happen; say something to those people and stick up for your school. So those of you who spit in the stairwells, leave class while the instructor is still talking and litter—you know who you are—start showing some respect for the people who make it possible for you to be here.

## Clackamas parking do's and don'ts



*No student or faculty member should feel forced to park on the grass.*

**Jacob Boenisch**  
ASG President

Unfortunately, once in a while we need to review the rules and answer some questions about parking on campus. Students and faculty need to remind themselves that certain activities are not acceptable. For instance:

1. Parking on the grass is punishable by a fine.
2. Parking in a handicapped spot without the proper permits is against the law.
3. Blocking a roadway is also unacceptable.
4. Taking up two parking spaces, no matter how nice your vehicle is, could result in a ticket.
5. The same is true of parking in the fire lane, in a no parking zone, or by the fountain near Randall.

These rules are nothing new, but you'd be amazed at how many students and faculty defy their own good judgment and break these laws. More amazing yet is the amount of people who contest their tickets. As chair of the traffic appeals board, I hope that future infractions

will decrease.

I don't think this is a big problem, but it is always good to be informed about some of the rules. Also, students and faculty should be informed about the current parking situation.

In some parking lots modulars have taken up valuable parking space. Construction crews are also using it up in order to get their job done. Although we are limited in premium parking spaces, that doesn't mean that there's nowhere to park. The Barlow parking lot is never full, and the Family Resource Center parking is always more than half empty.

For some of us it would probably be healthier if we didn't frustrate ourselves driving around, trying to find a close parking space, and instead lugged our books over the short distance to class.

No student or faculty member should feel forced to park on the grass. With the amount of parking available at this school, every student should be able to find a decent spot to park. Parking on the grass is disrespectful and also a major drain on the limited resources our ground crews have. If you are ever unsure whether you have parked illegally it's better for you to move your car to someplace you are sure is acceptable. This means that when you park you're not between red or blue lines, or no lines at all.

I know that this may sound a little redundant but you would be amazed at the number of honest citizens make the mistake of parking illegally. The best way to avoid problems is to be informed on some of the rules; this article is an attempt to keep you informed.

**Jacob Boenisch**  
ASG President

### The Clackamas Print Staff

19600 S. Molalla Ave. Oregon City, OR 97045

(503) 657-6958 ext. 2309

cccprint@clackamas.cc.or.us

<b>Co-Editors-in-Chief:</b> Christina Mueller (ext. 2576)	<b>Copy Editor:</b> Mike Garcia	<b>Advisor:</b> Linda Vogt
<b>Feature Editor:</b> Brad Zimmerman	<b>Photo Editor:</b> Timothy Bell	<b>Secretary:</b> JoAnne Gale
<b>Sports Editor:</b> Joel P. Shempert	<b>Co-A&amp;E-Editors:</b> Jared Bezzant	<b>Cartoonist:</b> Mark Hoffman
<b>Business Manger:</b> John Thorburn	<b>Cartoonist:</b> Alex Mahan	
<b>Business Manger:</b> Mairin-Anne Moore (ext. 2578)		

**Staff Writers and Production:** Laura Armstrong, Kristina Brooks, Adam Crum, Eric Eatherton, Kim Hamey, Toni McMichael, Jeremy Stallwood, and Robert Schoenberg.

The Clackamas Print aims to report the news in an honest, unbiased, professional manner. The opinions expressed in The Clackamas Print do not necessarily reflect those of the student body, college administration, its faculty or The Clackamas Print advertisers. Products and services advertised in The Clackamas Print are not necessarily endorsed by anyone associated with The Clackamas Print. The advertising rate is \$4.75 per column inch. All signed letters to the editor should be 300 words or less and will be considered for publication if submitted by 1 p.m. the Friday prior to publication. The Clackamas Print is a weekly publication and is distributed every Wednesday except during finals week.

## News Briefs

**Volunteers are needed** to tutor adults in reading and writing approximately two hours a week. Contact Joe VanZutphen at ext.2724.

**The deadline for the writers' club contest** is Feb. 18. Students may submit up to three poems, one essay, and one piece of fiction. Submit four copies of each entry. Include a cover page for each. Specifically, manuscripts should be prepared as follows: A cover page with the title, category, student's name, social security number, address and phone number. The first page of the story should only include the student's social security number and the title. Do not put your name on the first page of the entry. All entries will be considered for the literary magazine *Synesthesia*. Submit entries to Allen Widerburg in M233 or call ext.2359.

**A summer employment recruiter** will be interviewing students for summer jobs in the Grand Tetons on Friday, Feb. 13 at the Phoenix Inn in Tigrard. For more information and applications, see Rosemary in the Career Center.

**Gourmet chocolate truffles** and fine quality assorted chocolates will be on sale in the Community Center Friday, Feb. 13 from 10 a.m. to 2 p.m. Proceeds go to the Childcare Club.

**There will be a Valentine's Plant Sale**, presented by the college's Horticulture Club on Friday, Feb. 13 from 10 a.m. to 2 p.m. in the Community Center Mall.

**Need money** for childcare expenses? Grant applications to help pay for childcare during Spring term are now available. See Lela or Ann in the ASG offices, ext. 2245.

**Drop-in basketball** will open to all students and staff of the college 12:30 to 1:30 p.m. Tuesdays and Thursdays in the Randall Hall Gymnasium.

**The blood drive** is Fri. Feb. 13, 9 a.m. to 1:30 p.m. in the Randall Hall Lobby. An appointment is recommended by calling ext. 2247 or stop by CC 140.

**A Valentine's Day fund-raiser**, "Floral Designs by Katherine," will be held by Coyote Circle Feb. 12 and 13. Ms. Quartz is from the Walker River Paiute Tribe of Nevada and is a former Clackamas Community College student. The sale takes place from 9 a.m. to 3 p.m. each of these days in the Community Center.