

Guest performer Lennie Edwards set to play lead role in CCC play

Joel P. Shempert
Staff Writer

Several drama students, under the watchful eye of instructor David Smith-English, met on Feb. 14 for a rehearsal of the Edward Albee play, *The Lady From Dubuque*. Lennie Edwards joins them as a guest performer, playing the role of a pivotal character. After warm up and stretching exercises, the players took their positions and began rehearsing Act 2.

Unfortunately, Edwards was not in attendance, he is an instructor at Jefferson High School who was detained on school business, he was expected to arrive sometime later. The clock was ticking, however; and a girl took the stage with lines in hand to stand in for Edwards.

As the rehearsal progressed and the plot unfolded, the characters solidified and the story came to life. Something, however, was obviously missing. The students were all quite capable actors, but the story's flow was impaired somehow and at times seemed to lack punch. The character of Oscar, played by the stand-in, had virtually no presence and came across as awkward, erratic and at times even annoying.

Then, at 4:30 p.m., Lennie Edwards arrived. His lanky form leaped on stage and he took over his role. Immediately the char-

acter gained new dimensions and when they rehearsed the earlier portions of the act, everything became much clearer and fascinating. What had before been interesting, but hard to follow, became compelling, entertaining and dynamic.

The Lady From Dubuque is the story of a dying young woman and her friends. It also involves the title character, who arrives claiming to be the woman's husband, though the woman's husband knows better. Edwards' character, the Lady's conspicuously black companion, is delightfully eccentric and alive and carries most of the action. Thus, the play suffered without Edwards' abundant acting talent.

Surprisingly, Edwards has had but a smattering of formal acting experience, though he does affirm that there is considerable acting that he does every day. Edwards, a teacher of Television Productions and a linguist by trade, has performed most of his theater work at Jefferson High where he teaches. He also performed several walk-on parts in various productions during high school and produced a video around 1990 in which he played a guidance counselor.

It could be said that Edwards is self-taught as an actor, he agrees that he comes by his ability naturally. Edwards is definitely a character actor, which is

no doubt because he is such a character himself.

In relating how he came to play the role of Oscar, Edwards confides, "I must admit that it's ordinarily not anything I thought I would have done... but it's been very enjoyable working with the students." Edwards had not had any contact with CCC and its surroundings at all, except hiking and camping in the area. Until he received the call from Smith-English to play the part. He has now come to enjoy familiarizing himself with the college and its drama department.

As far as the work of Edward Albee is concerned, Edwards confesses only cursory familiarity.

"I knew Edward Albee much more by his reputation than his work," Edwards disclosed. He had seen part of *The Zoo Story* during high school, but the exposure didn't reach much farther than that. However, that doesn't mean Edwards doesn't enjoy Albee's work. Very hopeful that many people would come to see *The Lady From Dubuque*, Edwards asserts that "it's an interesting play. I think that different people will get different things from it. It's not one-dimensional."

The play opens on Feb. 29. The actors are all talented and entertaining, and the rare opportunity to see Lennie Edwards in action is not to be missed.

Getting to know your ASG President

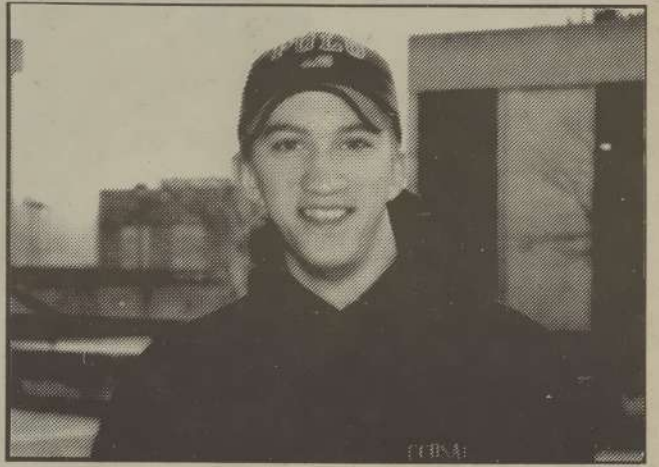


Photo by Lora Wahrgren

ASG President Mike Caudle says he ran for office because he wanted to make a difference.

Brad Zimmerman
Assistant Feature Editor

"I guess the reason I got into it [ASG] was because I thought I could make a difference. I've always had a desire to do what's right. And, I've always had an interest in politics...I thought this could be a way to do both...to have a positive effect on the political arena, as well as to help the CCC community," said ASG President, Mike Caudle.

Caudle is 19 years old and has been attending CCC since Fall of 1994. Caudle decided to go to CCC, even though Chemeketa was closer to his hometown of Canby.

"The reason that I decided to

come to Clackamas is two fold: I've always considered Clackamas County my home. Also, I came up here and the girl who gave the tour was real nice to me...she was nicer than the lady at Chemeketa," said Caudle.

He got involved in ASG during the winter term of 1995 by being elected as a senator and working on legislative issues. In the spring term of 1995 he was elected as ASG President.

"Well I think that this ASG group is, in my honest opinion, a culmination of probably 16 of the best student leaders in the state...and that's regardless of whether you're talking about community college student government or four-year student government," said Caudle.

Caudle spends his available

spare time watching C-SPAN (a political news channel), and spending time with family and friends. While Caudle is working as ASG President, he attends the "President's Council," headed by CCC President John Keyser, where issues are first brought up and discussed.

After discussing any relevant issues at the President's Council, Caudle presents them

to the ASG for further discussion and comment. After ASG reviews the ideas, they are rehashed at President's Council.

One of the many issues facing Caudle is of the alleged statement about the faculty staff member who re-

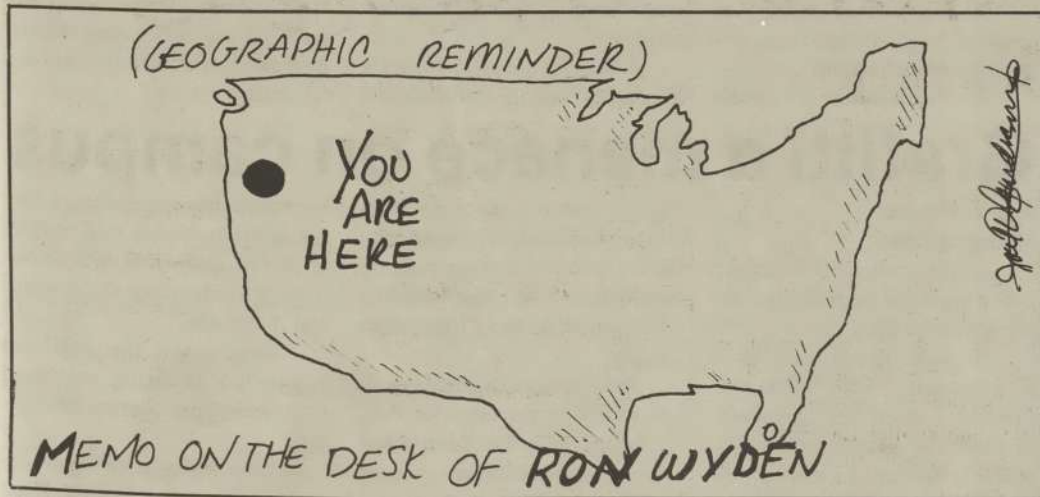
putedly said that students ought to be graded down for behavior outside of class.

On Feb. 14, ASG sent a letter to the Faculty Association President, asking for a public apology in relation to that alleged comment.

"There are faculty here who have a lot of honor and are very big people...and there are a lot of faculty here who aren't. I think that this is a microcosm for politics in the state, and in the nation...There are people who are willing to take the lead on some things. And then there are the people who aren't," said Caudle, when asked how he felt on Faculty Association's refusal to make the audio tape (with the alleged comment) available to *The Print* and ASG.

"I've always had a desire to do what's right."

-Mike Caudle, ASG President



JITTER'S

Espresso, Italian Sodas, and More!!

Regular Hours:

Mon. thru Fri. - 7:30 a.m. to 1 p.m.

Encore Hours:

Mon. thru Thurs. - 4:30 p.m. to 9:30 p.m.

Come in and experience the Coffeehouse atmosphere of Encore Hours. Study or socialize while enjoying an espresso or a snack in the intimate Skylight Dining Room.

Don't miss Mocha Mondays: All 8oz. mochas are \$1.25, 12oz. mochas are \$1.50, and 16oz. mochas are \$1.75.

Vintage Clothing

From Perry Mason to the Brady Bunch!!

Open M-Th, 3-6pm; Fr-Sa, 9am-6pm; Sun, Noon-5pm.

Phone: 659-4919

16703 SE McLoughlin

Milwaukie, Or. 97267

(in the old Tax Service office)

Corner of Naef Rd. and McLoughlin

All Items Under \$20