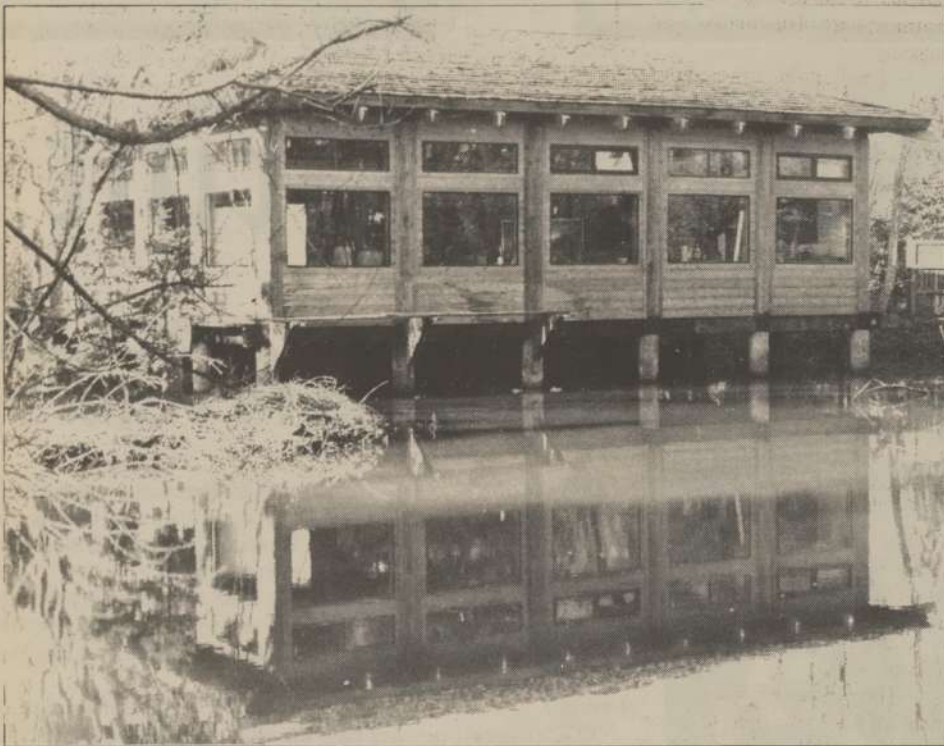


## Museum is visual display of recycling process, environmental importance



The ELC is itself a visual display of how many different materials can be recycled. The Lakeside Lodge was built from 80 percent recycled materials. Photo by Scott Johnson

by Angela Wilson  
Feature Editor

In helping the community recycle material, a recycling museum has been developed at the John Inskeep Environmental Learning Center.

The museum is filled with displays with information on materials that can be recycled and the importance of recycling.

"It's to teach people about the re-use of materials," said Larry Beutler, editor/publisher of Clearing Magazine, an environmental education magazine.

"There is no more room to throw things out. It is important to re-use all material," said Beutler.

The museum itself, along with other buildings at the ELC, is built from recycled material.

"The whole center is a model of rehabilitation, re-use, and recycling," said Beutler.

The museum was developed

through a grant from the Metropolitan Service District. They funded the grant from one-percent of their earnings from another project that would promote recycling.

The displays illustrate the primary products that can be recycled and the process, use, and disposal of the materials.

"The exhibits give general information and examples of recycling," Beutler said. "The museum is a visual display giving information about the issues and environmental impact of recycling," added Beutler.

All of the displays in the museum were sponsored by a corporation that handles the materials discussed.

The museum was dedicated on Dec. 16. The ceremony was highlighted by the building being christened with a bottle of Newell Creek water, and all the guests were given a portion of Mt. St.

Helens ash to sprinkle around the area.

The whole recycling depot is being developed into an information center for the community. A library of technology and information on environmental issues is in the developing stages.

"The center is for business and anyone in the community who is interested," said Beutler. "There is a lot of information that people don't realize, and the center is here to help them understand the issues."

Tours of the ELC are available. The recycling depot and museum are located on campus across from the ELC. There are a variety of things that can be recycled at the Recycling Depot.

"It is important that people know that this resource is here," Beutler said. "This is a way for the community to get involved with the resolution of the waste material problem."

## Members cast for Winter production

by Angela Wilson  
Feature Editor

A murder is announced in the *Chipping Cleghorn Gazette* for Friday the 13th, and everyone is invited. Is it a hoax? With the legendary Miss Marple in the neighborhood, mayhem is likely.

Agatha Christie's "A Murder is Announced" is the play being performed this term, and a cast has been chosen for the play.

The cast is gifted with the presence of it's own "on stage dictionary" straight from London, according to Barbara Bragg, Secretary of Theater/Communications.

The character Patrick Simmons is being portrayed by Negel Sanders who is from London and can help other cast members with authenticity of their British accents.

Bragg, who has directed productions in the past, will be portraying Letitia Blacklock. Bragg has performed and directed productions in the past, and this will be the first time in three years since she has been in a play at Clackamas.

The legendary Miss Marple is being portrayed by Merrill Lynn Taylor. Taylor has been the costumer for productions at Clackamas for 4 four years.

"She has an incredible background in theater," Bragg said.

"She has her Masters in theater, has acted and directed at the New Rose Theatre, trained in London, and was the guest director of the Fall production 'The Diviners.'"

Bragg commented on how many of the cast members were "Canbyites." The character of Julia is being played by Kenye North, Edmund Swettenham by Chad E. Goodell, Rudi Scherz by Adam Jarvey, and Inspector Craddock by David Burnett, all of whom are from Canby. Other people working on the production from Canby are Dan Kerr, sound, and Gregg Hoffart, lights.

The other cast members are Dolly Amato as Dora Bunner, Cheryl Ellison as Mitzi, Maklynn St. Clare as Phillipa Haymes, Tonya Cartmill as Mrs. Swettenham, and Roger Hancock as Sgt. Mellors.

Adam Jarvey is the properties/set decorator, Christina Bryant is the wardrobe/makeup person, and Sue Dement is the box office/house manager.

The Assistant Director is Travis Box, and the production is being Directed by Jack Shields, head of the Theater Department.

The Production will be performed in the McLoughlin Theater in March, and will also be showing at the Coaster Theater in Cannon Beach in March.

For reservations and further information call 657-6958 ext. 356.

### Poets, Authors, Playwrights, Essayists, One and All!

Experience the thrill of being published! *Rhapsody, CCC's literary and arts magazine*, is now accepting submissions for the Winter edition.

Submit your photocopied material, with only your social security number on the manuscript, to Trailer B, *Rhapsody* editor, before February 23. All manuscripts should be accompanied by a sealed envelope containing your name, title, phone no., social security no., and short biographical information.

## Clackamas Print

The *Clackamas Print* aims to be a fair and impartial newspaper covering the college community. Opinions expressed in *The Clackamas Print* do not necessarily reflect those of the college administration, faculty or Associated Student Government. Articles and information printed in this newspaper can be re-printed only with written permission from the Clackamas Community College Student Publications Office. The *Clackamas Print* is a weekly publication distributed every Wednesday except for finals week. Clackamas Community College, 19600 S. Molalla Avenue, Oregon City, Oregon 97045. Office: Trailer B. Telephone: 657-6958, ext. 309 (office), 577 (production) and 578 (advertising).

Editor-In-Chief: Jim Titus  
Managing/News Editor: Briane C. Dotson  
Copyeditor: Roseann Wentworth  
Feature Editor: Angela Wilson  
Photo Editor: Jillian Porter  
Sports Editors: Mark A. Borrelli, Staci Beard  
Reporters: Dana Atwood, Aaron Brown, Me-Lissa Cartales, Amber Cordry, Cameron C. Dickey, Ron Jagodnik, Dawn Kuehl, Julie Merriot, Margy Lynch, Helenmarie Nelsen, Jennifer Soper  
Photographers: Scott Johnson, Dawn Kuehl, Lane Scheideman, Tim Zivney  
Business Manager: Gregg Mayes  
Advisor: Linda Vogt

## THE MONEY MACHINE



With the skills to operate this machine you can earn \$50,000 - \$60,000 - \$70,000 or more a year. For more details, call College of Legal Arts, (503) 223-5100 (call collect outside the Portland area)

NOT FOR THOSE WHO THINK ALIKE, BUT FOR THOSE WHO LIKE TO THINK.

### ATKINSON MEMORIAL CHURCH

Sixth & John Adams, Oregon City  
The Reverend Mr. Richard K. Bellinghorn, Minister

COMING February 4 "THE TWO GREAT COMMANDMENTS RESTATED"

Public Services 11:00 AM  
Adult Forum 9:30 AM  
Attended Nursery 9:30 AM  
Church School 9:30 AM (except Aug. 1-Sep.15)



inches	1	2	3	4	5	6	7	8	9	10	11(A)	12	13	14	15
L*	39.12	65.43	49.87	44.26	55.56	70.82	63.51	39.92	52.24	97.06	92.02	87.34	82.14	72.06	62.15
a*	13.24	18.11	-4.34	-13.80	9.82	-33.43	34.26	11.81	48.55	-0.40	-0.60	-0.75	-1.06	-1.19	-1.07
b*	15.07	18.72	-22.29	22.85	-24.49	-0.35	59.60	-46.07	18.51	1.13	0.23	0.21	0.43	0.28	0.19
D50 Illuminant, 2 degree observer															
Density	0.04 0.09 0.15 0.22 0.36 0.51														