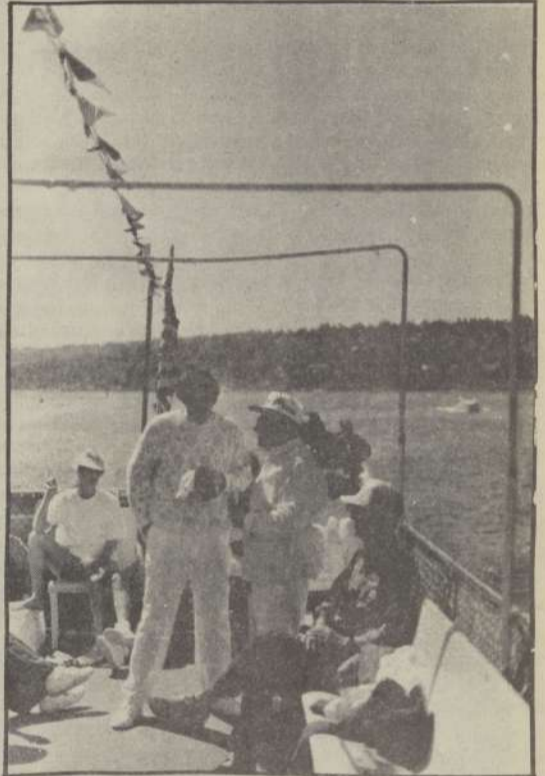
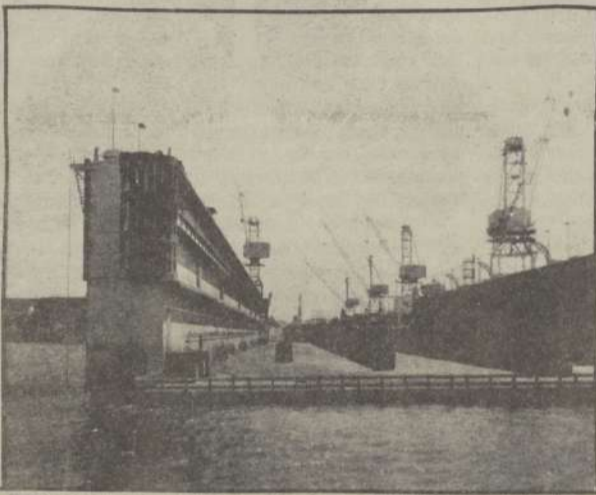




Ed Ciliberti, a public relations officer with the Bureau of Land Management, explains the importance of waterfront vegetation to a group of officials from the plastic industry and local government.



Local politicians and plastic industry officials got a chance to view cleanup of the Willamette River first-hand during an informational cruise from Oregon City to Swan Island.



Port of Portland drydock number four will hold the Exxon Valdez if the crippled tanker is allowed to dock in Portland for repairs.



Fishermen stretch across the Willamette near Oregon City in a "hog line." Fishermen are the main source of debris found in the river.

centimeters

16 (M)	17	18 (B)	19	20	21	22	23	24	25	26	27	28	29	30	L*	a*	b*
49.25	38.62	28.86	16.19	8.29	3.44	31.41	72.46	72.95	29.37	54.91	43.96	82.74	52.79	50.87			
-0.16	-0.18	0.54	-0.05	-0.81	-0.23	20.98	-24.45	16.83	13.06	-38.91	52.00	3.45	50.88	-27.17			
0.01	-0.04	0.60	0.73	0.19	0.49	-19.43	55.93	68.80	-49.49	30.77	30.01	81.29	-12.72	-29.46			
0.75	0.98	1.24	1.67	2.04	2.42	SN: P0013										Colors by Munsell Color Services Lab	

Don Williams