

Welle tells of turning school district around

by Angela Wilson
Business Manager

Dr. Jan Welle, superintendent of the Harrisburg Union High School District, spoke on "One Woman Making an Impact as an Educator" at the Issues Breakfast Wednesday, sponsored by the Focus on Women organization.

When Welle went to the Harrisburg Union High School District the students were entering their own grades into the grade book, teachers were teaching in areas they were not prepared for, and the students didn't have any goals for the future.

"That was seven years ago. This year our school is one of the top six in the U.S.," said Welle.

Welle interviewed students, teachers, parents, the sheriff, and

local merchants; from the information she received, action was taken. Welle started a comprehensive program where people were to "do everything and do it well." Attendance is worked on a time clock basis to "prepare the students for the working world."

"I got rid of the teachers who didn't do their jobs," Welle said. She fired 75 percent of the teachers and hired "the best." Welle told the new teachers to "do your dream curriculum."

"I want that freedom to do my dream as an administrator," Welle added.

When Welle went to Harrisburg, there was a lot of fighting among students. The consequence of fighting is hours of "hard work in the local cemetery," or other

community service.

"There isn't any fighting now, and after three years we have the cleanest cemetery anywhere," Welle said. "The consequences are appreciated now."

Welle incorporated Key Results Management into the school system. The focus of Key Results Management is to "achieve results and rapid return without getting bogged down."

"Learning is a personal matter, and school can lead students to high success," added Welle.

"Our students have higher goals and expectations now, and they are competing academically with schools in the AAA division," Welle said.



Jan Welle shared her story of success as an educator at the Issues Breakfast on Apr. 12. The event was sponsored by Focus on Women.

COUNSELORS NEEDED

Enhance your clinical skills and gain valuable career preparation by volunteering at the YWCA Girls Emancipation Program. Assist in group counseling, program operation and case reporting as part of our team working with troubled adolescent girls. Call Ruth at 223-6281

NOT FOR THOSE WHO THINK ALIKE, BUT FOR THOSE WHO LIKE TO THINK.

ATKINSON MEMORIAL CHURCH

Sixth & John Adams, Oregon City

The Reverend Mr. Richard K. Bellingham, Minister

COMING !!
April 23:
"The Humanity of God"



Public Services
11:00 AM
Adult Forum
9:30 AM
Attended Nursery
9:30 AM
Church School
9:30 AM
(except Aug. 1-Sep.15)

Tour of Seattle successful, fun

By Tim Jones
Staff Writer

It was a whirlwind tour of Seattle and the University of Washington that Clackamas Community College Drama Department took two weekends ago. While in Seattle they toured the University of Washington's Theater Department and viewed several theater companies.

Arriving in Seattle Friday afternoon, the group toured the University of Washington's Theater Department. The theater department there is larger than any found in Oregon according to Jack Shields, chairperson of Clackamas' theater department. "There are four different theater spaces. Each stage is very well-equipped for performances and the seating capacity ranges from 150 - 1200 in the largest of the theatres," said Shields.

The visit to Seattle was organized by Barbara Bragg, secretary of Clackamas' communications and theater arts department. "She has designed and engineered another successful theater tour for the students (of the Clackamas

Theater Department)," said Jack Shields.

The students saw three top quality plays performed by professional theater groups. Friday night they took in the play "Loot," by Joe Orton, at the Empty Space Theatre in the Old Town area of Seattle.

Saturday morning some of the students went to the Museum of History and Industry and participated in the audience of "Sandy Bradley's Potluck," a live radio broadcast heard all over the nation on National Public Radio. The students also spent some of the day at Pike Place Street Market while enjoying the beautiful city of Seattle.

"This trip gave our theater department students a chance to view a top class theater department," said Shields. "The students got a closer look at the major benefits of a large theater department as well as the draw backs of being in such a large facility." They were taken on a tour of the University of Washington's scene and costume shop, where they were impressed by the size and quality

of the shops.

On Saturday afternoon the busy group settled down to watch a matinee at the "Group Theatre," near the University of Washington's campus. The play being performed was "Extremities," written by William Mastrosimone. This particular play was performed here at Clackamas in the Fall of 1987.

The highlight of the trip was the performance of "Les Liaisons Dangereuses."

"The play was a quality production. The audience loved it," said Shields. These plays employ professional actors that enhance the acting that take place on stage.

"The trip was a smashing success," explained Shields. "It was a positive experience for everyone involved. The plays were of such high quality that the audience just loved them," said Shields.

Educational experience from trips like this one is valuable in helping the students view for themselves the profession they might choose.



Try our soups,
fresh salad bar,
100 percent Beef Hamburgers



Good Food at Good Prices

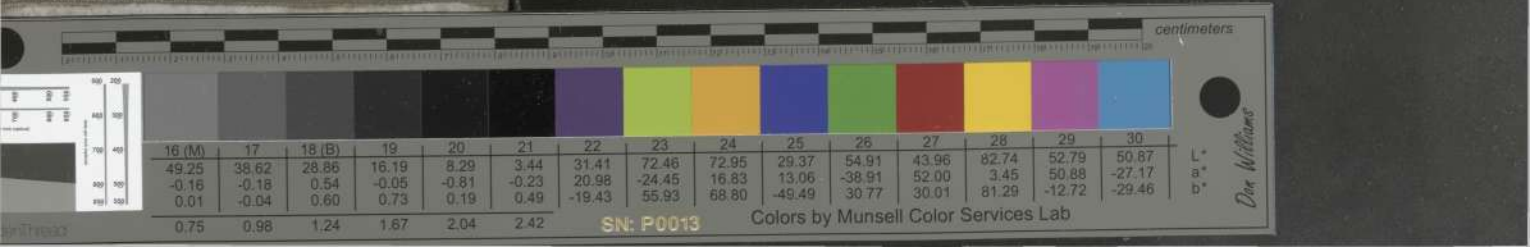
ON-CAMPUS DAY CARE

Camp Fire Community Day Care provides a developmentally appropriate program for children 6 weeks to 6 years old.

- * Convenient Orchard Center site
- * Monday-Friday, 7 a.m.-6:30 p.m.
- * Full-time and part-time care
- * Non-profit, United Way agency
- * Financial assistance available
- * Servicing the non-college and college community




Camp Fire
Mt. Hood Council
657-6683



16 (M)	17	18 (B)	19	20	21	22	23	24	25	26	27	28	29	30
49.25	38.62	28.86	16.19	8.29	3.44	31.41	72.46	72.95	29.37	54.91	43.96	82.74	52.79	50.87
-0.16	-0.18	0.54	-0.05	-0.81	-0.23	20.98	-24.45	16.83	13.06	-38.91	52.00	3.45	50.88	-27.17
0.01	-0.04	0.60	0.73	0.19	0.49	-19.43	55.93	68.80	-49.49	30.77	30.01	81.29	-12.72	-29.46
0.75	0.98	1.24	1.67	2.04	2.42									

SN: P0013

Colors by Munsell Color Services Lab

Don Williams