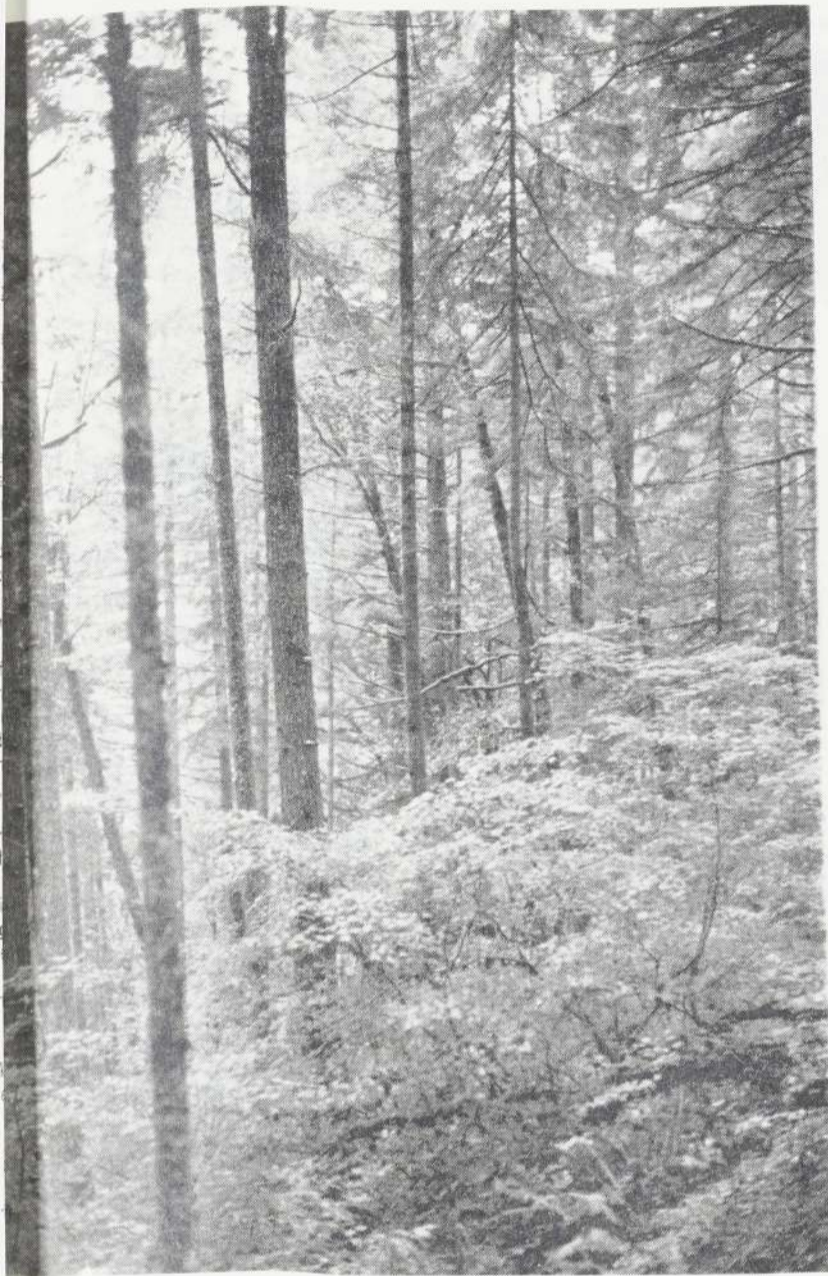


Scenic Silver Creek offers serene setting



Photos by Larry Jackson



To experience these "Autumn Leaves" first hand, one must travel, as this photographer did, to "Silver Falls State Park" located 14 miles south of Silverton, Oregon. This is one of the most unique places in the state. The park facilities consist of picnicking and camping areas, two youth or group camps, and a six mile trail winding through two canyons and twelve waterfalls.

