

Lee's botany classes: studying plants at Onahlee



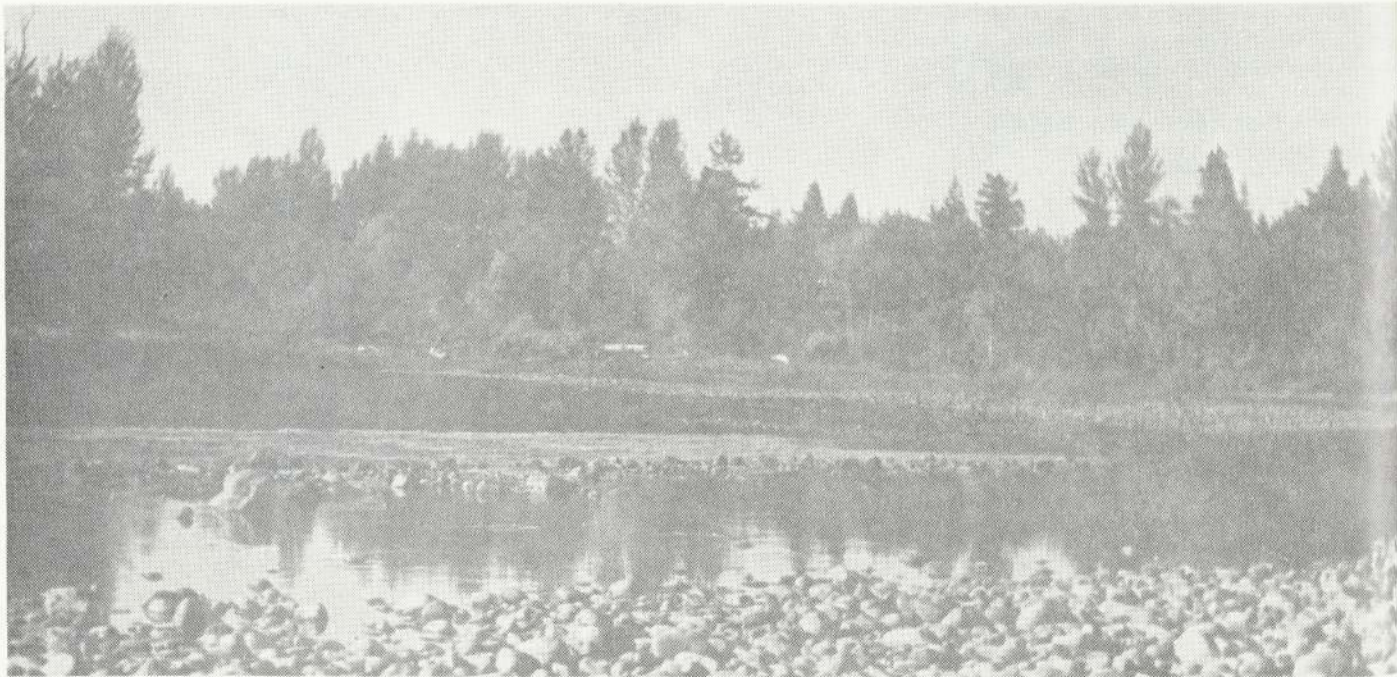
David Watson discovers that not all algae lives in water.



Steve Thomas inspects a fallen leaf for identification.

What has chloroplasts, cell walls, and makes oxygen? Plants of course! Which is just what Florence Lee's Botany class went to see last Thursday, Oct. 14. The short drive to Camp Onahlee (owned by Mt. Hood Counsel, Camp Fire) allowed a field study to take place during the normal three hour lab block.

Between the morning and afternoon labs an outdoor environment permitted 27 students to observe native plants in natural settings. Other trips will be taken throughout the year by the class.



A pond in the Molalla River allows a view of succession along its bank.

