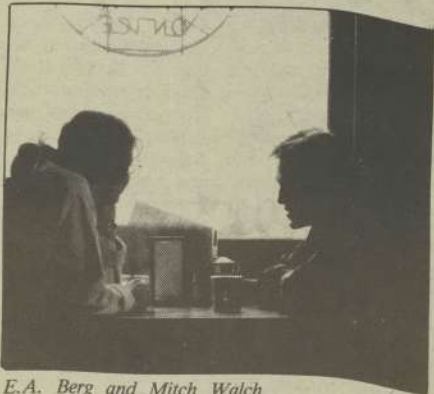


Wet suits, wild waves, a 'Whee!' Print Staff take



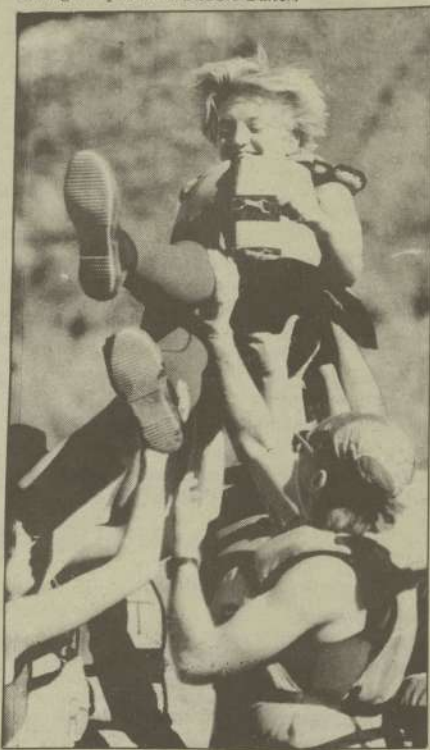
E.A. Berg and Mitch Walch wake up over a cup of hot coffee at Maupin's Oasis Cafe'



I'm stuck, complains Michelle Taylor as she, Stephani Veff, and the entire Print staff struggle into their wet suits.



Here we are, left to right... Don Shula, Linda Vogt, Beth Coffey, Mitch Walch, E.A. Berg, Chris Curran, Jodi Martini, Dawn Kuehl, Heleen Veenstra, Stephani Veff, Michelle Taylor, Lorain Collins, and taking the photo is Debbie Baker.



Heleen Veenstra is tossed in the air during a group trust building exercise.



Debbie Baker guides the Print Staff's E.A. Berg, and Lorain Collins through Box Car.

Everytime we finished a rapid I would always ask "Is that all?" I was never able to get enough. At one point I was asking Debbie, our guide, "If we could go for a mile on rapids"

—Michelle Kimberly Day

Go-ya-ha! Alright!
Streams of delight —
A cold dose of water
The face — and then
"Calmer water." Wow!
So (aloud)

"I want to feel sunlight on my face,
See the dust cloud disappear without a trace,
I want to take shelter from the poison rain,
I'll show you a place high on a desert plain,
Where the streets have no name."
U2 (with E.A. Berg)

