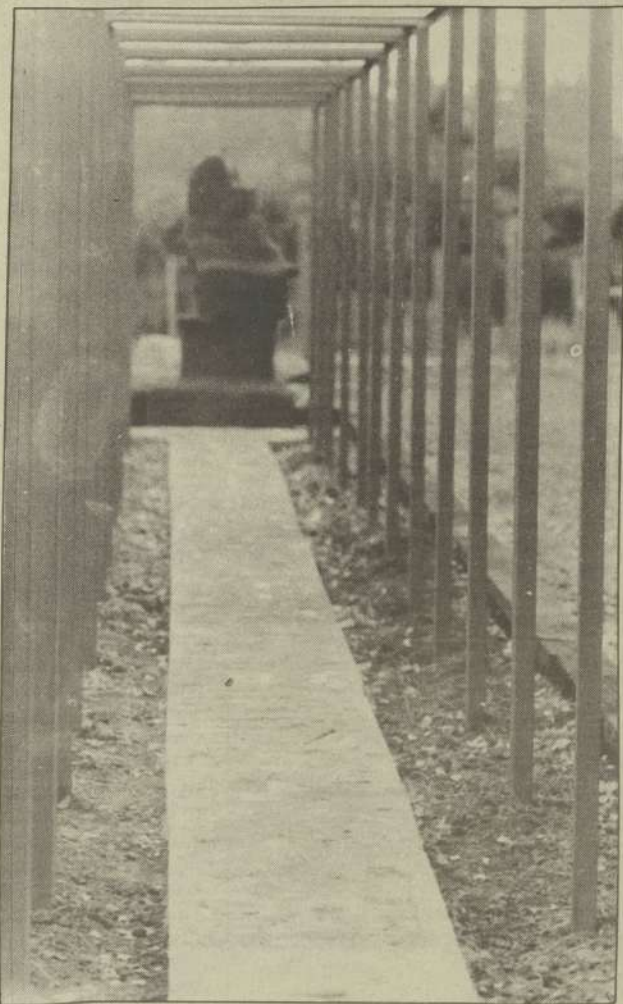
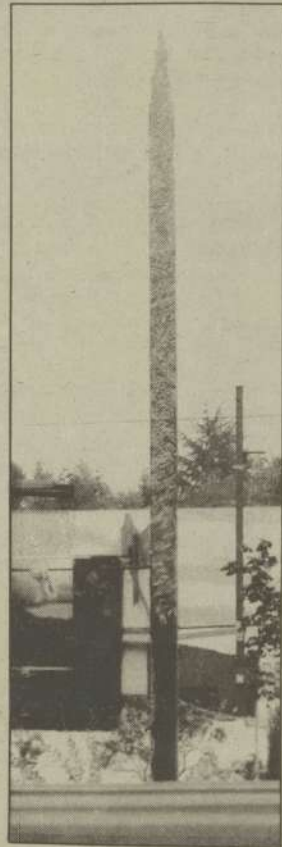


Michi Kosage's completed sculpture "A Flag Tower With Arbor"



The Mosaic walkway under the steel vine trellis, is made up of miscellaneous odds and ends fit into the cement.



The 25-foot painted flag tower at the southern end of Kosage's sculpture.



By Beth Coffey  
Photo Editor

Over the past year Clackamas Community College's Environmental Learning Center has gained student interest and support. Recently a new aspect of the ELC has been added, our developing an Environmental Sculpture Garden.

The whole idea of a sculpture garden was initiated three years ago as a possible solution to the growing abundance of recyclable materials. Art Department Chairman, Larry Tipton, came up with the thought, got together with Kelley and Rick True, his design instructor, and with the combined effort the three began working toward a shared goal.

As Rick True explains, Clackamas College pays nothing for the sculpture project. Operating costs have been paid for by \$1,500 earned from the sale of mosaic tiles that will be placed in the garden, two \$2,000 grants from the Oregon Arts Commission, a 6,000 grant from the Metro Service District and several private contributors. With exception of the tools and steel used, "all components utilized in the construction are salvaged materials," and cost nothing, says True. Money from the donations went to help pay the sculptors, Michi Kosage and Dick Pickering, to design and create the art work during the summer workshops.

Kosage, along with his students from PSU, began planning July 6, and building July 16 working everyday for six weeks until completed. The finished product consists of

