

Feature

Campus security not "Rent-a-Cop"

by James Brown
Business Manager

When most people think of campus security, they think of "Rent-a-Cop" which is far from the truth. On Clackamas Community Campus they are known as Public Safety Officers. Oregon Revised Statutes, Criminal Code refers to them as Peace Officers which is defined as a "sheriff, constable, marshal, municipal policeman, member of the Oregon State Police or investigator of the Criminal Justice Division of the Department of Justice and such other persons as may be designated by law" (ORS 161.015 General Definitions). The reasons they are Public Safety Officers rather than Security Officers is because they are commissioned through Oregon City as reserve police officers and are employed by Clackamas Community College to do security. As reserves they go through the same training as regular officers do, including many, many lectures on existing, new, and upcoming criminal and traffic laws, firearms training, defensive driving, just to name a few.

The Public Safety Program deals with the protection of the physical plant and equipment, the safeguarding of staff and students, the controlling of a



Photo by Beth Coffey

vehicle parking on college property, and the continued implementation of a program of good relations with students, staff and the community.

The Public Safety Officers have the philosophy of prevention, rather than apprehension, some of the goals that Public Safety Office tries to achieve are:

A. Control and oversee all vehicle parking and traffic on col-

lege parking lots and roadways.

B. Provide protection and security for the College Physical Plant, equipment and property.

C. Establish and maintain continuing rapport with local law enforcement agencies.

D. Establish and maintain a college loss prevention and crime prevention program among all college staff, faculty and students.

These are just a few of the goals that the office tries to achieve. Public relations is stressed and is vital to the success of the Public Safety Officer performing his or her job.

After going over crime reports, Public Safety came up with some problem areas which reveals that the leading or direct cause of the thefts of college or private property is negligence

on the part of the individuals having control of the property. Staff and students leaving college and personal items unattended in locker rooms and offices. They leave property in plain sight in their vehicles and leave their vehicles unlocked.

This year staff and students haven't been getting as many parking citations as in previous years. In fact parking citations in general are down approximately 8 percent.

There is adequate parking at the college although we may not always consider it conveniently located. Handicapped parking spots should be kept available for those who need them, not those who are just too lazy to walk. Access for emergency vehicles must be kept available. If staff and students observe the clearly marked (in most places) NO PARKING and restricted parking signs, there would be no reason to issue citations.

Public Safety Officers are here to protect and assist. We need to accept responsibility for our own actions and not blame the officer who cites us. Next time you see a Public Safety officer, smile and say "Hi" because they are here for the benefit of us all.

River Place displays John's art in lobby

by Steven Ziolkowski
Staff Writer

The Portland RiverPlace, sandwiched between the Hawthorne and Marquam Bridges, is not the French Riviera. But sidewalk cafe tables, pleasure boats docked in the marina, people out to see and be seen, and glitzy window displays give the promenade a first class resort feel.



Photos by Beth Coffey

lit both by a lamp held aloft and by invisible back lighting that made "Louise" seem to glow.

More formal and traditional was the portrait of Susan O'Neil, in a pink dress, seated on a bench covered by a white shawl and holding a spray of white flowers. Kathy McRae is portrayed one ballet shoe on and the other off - in her hand. The most prominent painting as you enter the main lobby doors is a portrait of Jennie Washburn, a Scottish looking lass.

The only male portrait here is of Jack Fellman - complete with a blackboard backdrop filled with formulas of OH radicals, a desk decorated with an anatomical skull and one book upon which Fellman rests his hand.

Of the three landscapes presented, each seems to represent a different interpretive

school of painting, but all convey John's strong landscape style. "Richmond Bridge - London" (a 4' by 5' canvas) combines the architectural impression of Pissarro with the palette of Monet. John made use of large negative or empty space in the sky, filling it with blended colors, from light china blues to mauves.

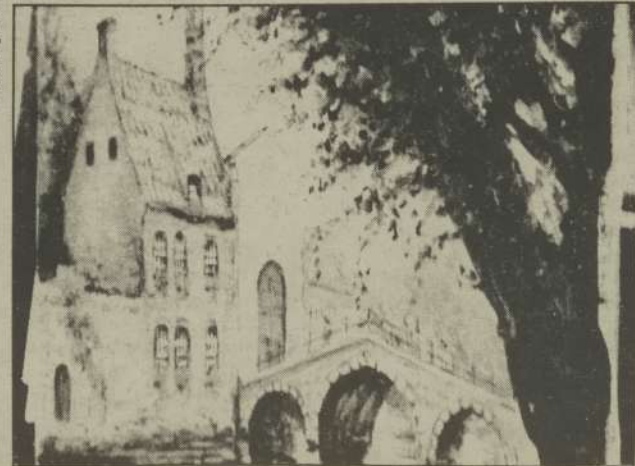
Two of the best pieces, also large landscapes, depicted water scenes. "Columbia River after Summer Shower," takes almost surrealistic cliffs in light yellows, rose, lavender and muted greens and offsets them with diffused sunlight shining from behind a small treed island. The sailboat drifting on the Columbia and the farm, barely visible on the bank, is like a seascape by Turner with a shoreline by Constable.

John's skills as a landscape and portrait painter merge with his

special use of light, to portray a woman canoeist in, "Homage to W.W." The colors are still soft and muted and the interpretation is in the Romantic Movement style. The composition creates suspense by showing a gate and steps of a landing, an open river, and through the foliage,

buildings in the distance. This painting poses questions of a story. Why is the boater alone? And where is she going?

Like the questions of the lone boater, the question presented by the eight Leland John paintings is, where will his talent take him next?



A sample of John's work

The Student Center.

Going to McDonald's® is almost as much a part of school as going to class. You've made us the place to meet, to talk, to have a good time, to celebrate your victories and help forget defeats. You've made McDonald's more than just another place to eat. And that's why, at McDonald's, we say...

IT'S A GOOD TIME FOR THE GREAT TASTE

CCC Students

Show your student body card and receive a regular size order of fries FREE! A different food offer each month (with purchase of any large sandwich).

©1984 McDonald's Corporation

McDONALD'S No. 7189
1450 MOLALLA AVENUE
OREGON CITY, OR 97045