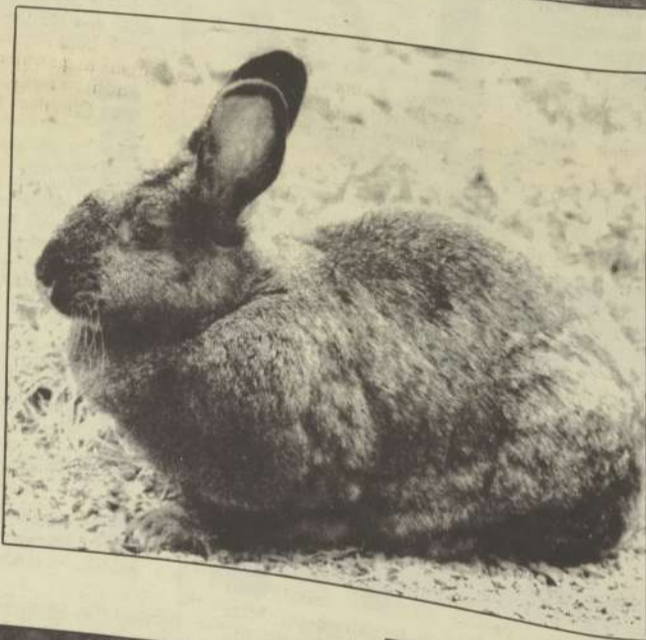


Photo Essay

The ECL...a peaceful refuge



Photos by Beth Coffey



Although our school is amidst a rural community, a country setting, the daily responsibilities to family, school, and work can often dominate our lives to the extent that we lose touch with our surroundings.

The Environmental Learning Center has a uniquely calming effect, and acts as an escape to an individual's reality, their thoughts and dreams. The ELC is

a peaceful refuge from our chaotic world and all it costs is a few moments of your personal time.

It is a small price to pay for something beautiful, for happiness.

