

# Thorp, Palacios, Poff join ASG

By Shelley Ball  
Of The Print

Students Roy Thorp, Henry Palacios and Connie J. Poff were selected by a five-member committee May 6 to round out the executive cabinet of the Associated Student Government (ASG).

Thorp was chosen as assistant to the president, Palacios as activities director and Poff as administrative assistant.

The five-member committee which selected them was composed of ASG President-elect Daniel Hiltz, Vice President-elect Shawn Watterberg, Student Activities Director Debbie Baker and two students-at-large.

A total of six people applied for the three cabinet positions. Watterberg said choosing between them was difficult. "They were all excellent," he

said.

Thorp is a physics major and has a background in organizing various fund raisers and fee collections. In his application he states he is "primarily seeking to serve the public and also obtain valuable experience in contact with the College student body."

Palacios, who was a contender for vice president in the

elections, is a mathematics major and has served as assistant to the president senator. Two of his job duties as senator involved working on blood drives with the College and suggestion boxes. In his application, Palacios said he wanted to be more involved in ASG. "I believe this would help me with my future endeavors and plans," he said.

Poff is majoring in secretarial science with em-

phasis in accounting and is a member of Phi Beta Lambda, Pi Eta Chapter at the College. Her qualifications include secretarial experiences the club's secretary. "I feel the position of administrative assistant would be a good learning experience and that I could contribute certain secretarial and organizational skills which would benefit ASG," she stated on her application.

## the Print

Clackamas Community College

Vol. XVIII, No. 22

Wednesday, May 8, 1985

### ELC celebrates 10th anniversary on May 11

By Shelley Ball  
Of The Print

In honor of its 10-year existence, the John Inskeep Environmental Learning Center (ELC) at Clackamas Community College will be holding a special 10th Anniversary Celebration and Dedication May 11 from 2-5 p.m.

ELC Director Jerry Herrmann said the celebration is commemorating "the fact we're still around, the fact we were able to get this far with this program."

Another big aspect of the celebration includes the official dedication of the center's regional fish rearing facility and Stream Enhancement Program. The facility is currently raising a batch of 15,000 Coho salmon, the second batch the center has raised. Winter Steelhead are also being raised at the ELC.

The facility is a project of the Salmon Trout Enhancement Program (STEP), of which the ELC was chosen

as a regional demonstration site by the Oregon Department of Fish and Wildlife.

Some of the Coho salmon will be released into the College and center headwaters of Newell Creek as part of the ceremony. The fish rearing tank will be christened with a flask of Willamette River and Abernathy Creek water, which will help the fish get used to it in commencing their three-year journey to the Pacific Ocean and back. Assisting in the christening will be newly-selected College President Dr. John Keyser.

In addition to the fish facility dedication there will be numerous awards presented to all those who have aided the ELC in one way or another. Framed certificates will be presented to various area groups, organizations and individuals by Bonnie Robertson, College Board of Directors' chairperson and ELC Association President Mike



THEN AND NOW--ELC site (above) Below is completed tank that will be dedicated and christened May 11.

Photo Courtesy ELC

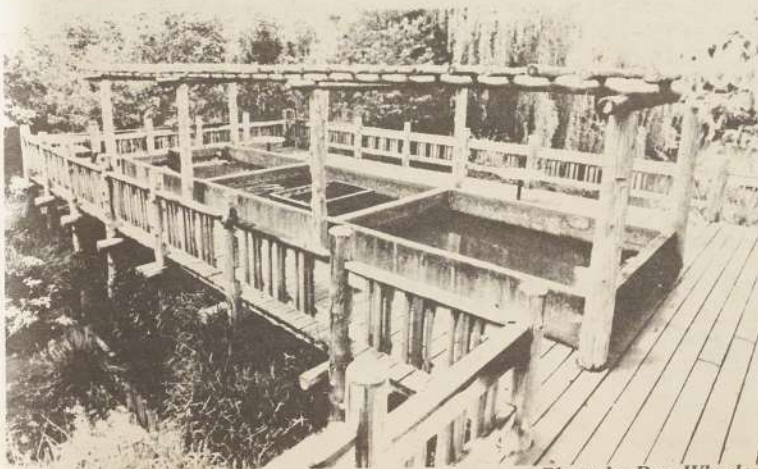


Photo by Dan Wheeler

Strieher.

Awards for business and industry will be jointly presented by Dale Harlan, Clackamas County Commission chairman and State Senator Joyce Cohen from the Senate Energy and Environment Committee.

Other participants in the celebration include Congressman Ron Wyden, State Senator Steve Starkovich and Bob Maben, regional supervisor of the Oregon Department of Fish and Wildlife, all of whom will give addresses.

There will be hors d'oeuvres in the form of a salmon bake, refreshments and musical entertainment will be provided. A tour of the ELC grounds will also be given, and will include a demonstration of the center's Birds of

Prey exhibit.

In order to see how far the ELC has come, Herrmann said that in the center's first year of operation it raised \$3,000 and the College contributed \$5,000. Now the College contributes \$28,000, while the ELC raises \$110,000. Most of the center's funding comes from contributions, recycling and landscape consultation, Herrmann said. Sponsoring businesses also help to develop special projects, and some newly-acquired sponsors of the ELC include Publisher's Paper in Oregon City, Pacific Northwest Bell and Portland General Electric.

ELC membership has increased from 75 members to 400. Herrmann said the members provide almost 5,000 (Continued on Page Six)

