

# the Print

Clackamas Community College

Vol. XVIII, No. 6

Wednesday, November 7, 1984

## Barlow Hall receives addition Completion date estimated for April

By Shelley Ball  
Of The Print

For those who may not have noticed it yet, Clackamas Community College's Barlow Hall is in the process of having an addition built on to it.

The addition is expected to cost \$700,000 and will consist of classrooms, labs and faculty offices, Don Fisher, director of physical plant, said.

Fisher explained the first floor of the addition will have three classrooms and two labs for thermal energy and hydraulics, while the second floor will have two nursing labs, three classrooms and faculty offices that were previously located in Clairmont Hall.

Fisher has been working with the architects for the addition, and he will be involved in the inspection of the building as well. The contractor for the addition is Howard Brewton Contractor, Inc., who was also responsible for the construction of the Community Center.

The idea to build an addition to Barlow Hall surfaced

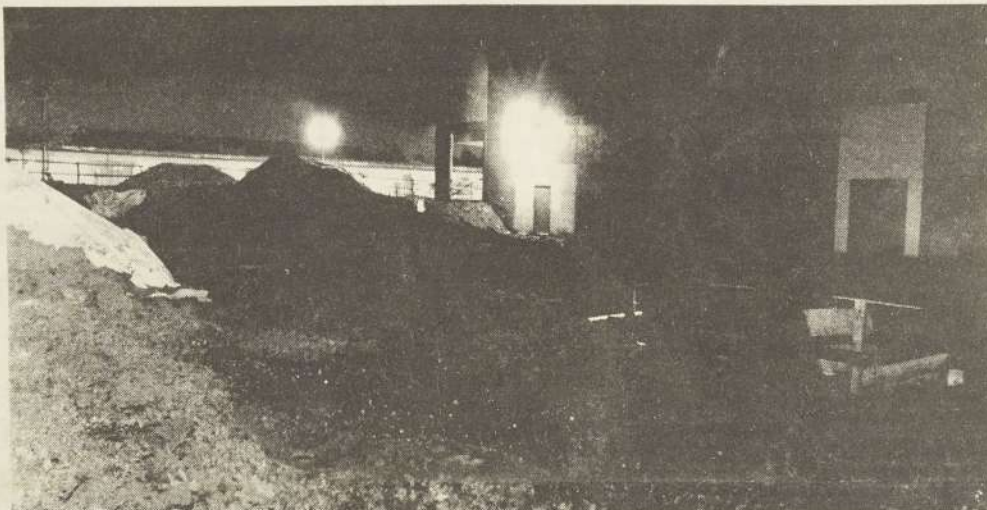
out of the storage problem created by the Smuckers Building fire of Aug. 30. At that time, the College's Board had two options; to approve the rebuilding of the Smuckers Building or to construct the addition.

Fisher explained building the addition would be more convenient. Students who attend classes at Clairmont will be relocated in the new addition. Fisher said this will "put the students more on the main part of the campus."

Items that were stored in the Smuckers Building will continue to be stored in Clairmont Hall. "The Clairmont Hall was originally designed as a warehouse," Fisher said.

As for the reconstruction of the Smuckers Building, Fisher said it would cost more than the present \$330,000 insurance settlement that has been offered in order to put it up to current building codes. Fisher did say the Board has not ruled out the possibility of replacing Smuckers at a later date.

In order to have the addition constructed as quickly as



NIGHT DIGGINGS--the future site for Barlow center is in the foreground. Hall as seen at night. The College's community

Photo by Joel Miller

possible, the College's Board approved a resolution that allows for fast-tracking. Fisher explained fast tracking allows the College to hire a contractor for a certain amount right away instead of putting out bids for the work. Fisher said this allows the construction to get underway sooner, as much as two to three months sooner. The College's Board had found

emergency conditions exist, due to the Smuckers fire, so they chose fast-tracking in order to speed up the building process.

Construction for the addition is currently underway, with the concrete foundation to be poured shortly. Fisher said the expected date of completion for the addition is the end of April.

### As of press time Measure 2 defeated

Volunteers' efforts weren't in vain as election returns show that Measure 2 has been defeated at the polls.

Monday, Nov. 5, it looked as though Measure 2 might pass, so opponents of the measure called an emergency canvassing meeting. At the meeting, which was held at 3:30 p.m. in the cafeteria of Boltin Elementary School, volunteer canvassers were given bundles of a letter by Audrey McCall and a map of the areas the leaflets were to be distributed.

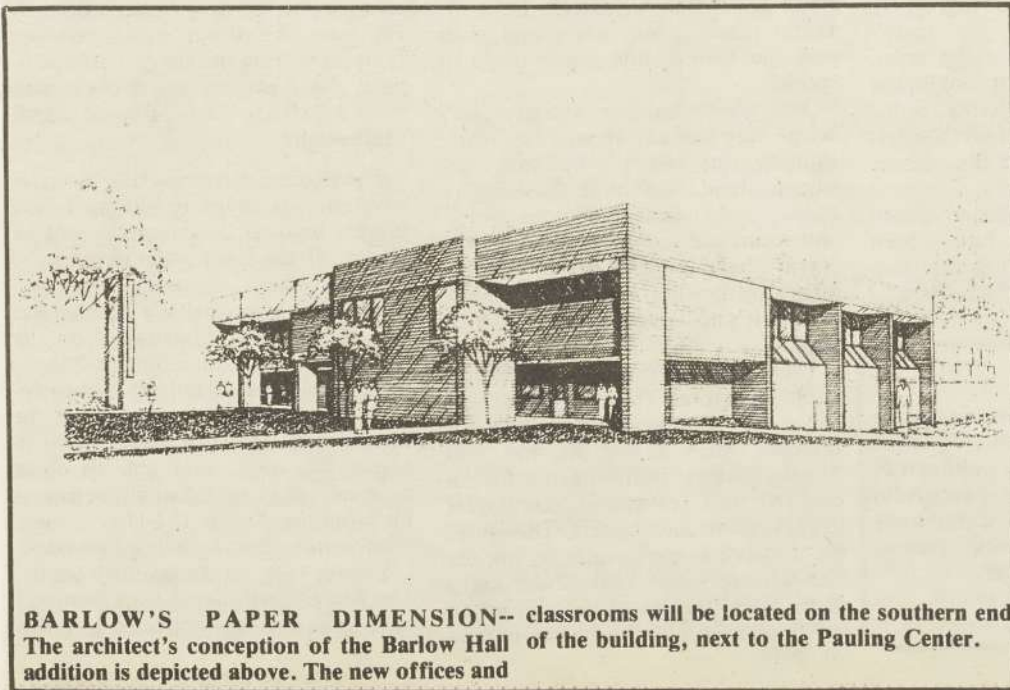
### Reagan wins

President Ronald Reagan has successfully won a second term by defeating Democratic presidential challenger Walter Mondale in what is being termed the biggest landslide victory in a presidential election.

Charles A. Clemans, Superintendent of Oregon City Public Schools, not only volunteered his efforts to the canvassing campaign but also had two speaking engagements Monday night. "I wasn't hired to hand out campaign literature, but I guess it comes with the territory."

Volunteers worked in pairs distributing leaflets to homes in the Oregon City, West Linn, Gladstone, and Milwaukie areas. Much of the response was positive except for one woman, who refused to give her name, who turned away a volunteer by shouting, "Get the hell away from here! every damn day you leave something on my door." She said that she hoped her dog would bite the volunteer.

The letters written by McCall urges voters to take a good look at the disadvantages of Measure 2 and vote no.



BARLOW'S PAPER DIMENSION-- classrooms will be located on the southern end of the building, next to the Pauling Center. The architect's conception of the Barlow Hall addition is depicted above. The new offices and

