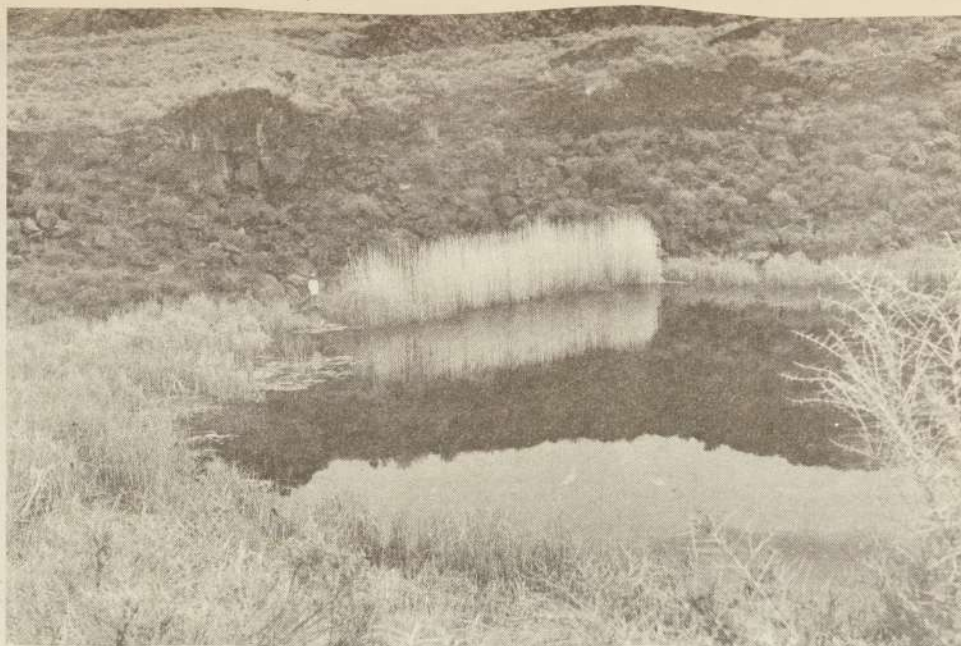




Lily, a very rare plant found at Malheur.



Diamond Crater, an example of the vast beauty of Malheur.



The Western Sage Rattlesnake is one of many found and Malheur National Wildlife Refuge.

Story and photos
by Rick Obritschkewitsch



Students search for perfect rock. Due to the crystallization process, the hollowed-out magma had a rattle sound.

