

# "I've never done anything in the dirt before . . ."

Grab your pick and shovel and join the nine Clackamas Community College students who are currently sculpting figures in a wall of dirt as part of their art class.

The young artists are creating on the theme of "Oregon History." The shapes include an eagle head, beaver, totem pole, Indian head, Dr. John McLoughlin, George Abernathy, Joe Meek, a pioneer lady with child and another woman.

"It should be interesting. I've never done anything in the dirt before," Alvin Schafer, creator of the totem pole, said.

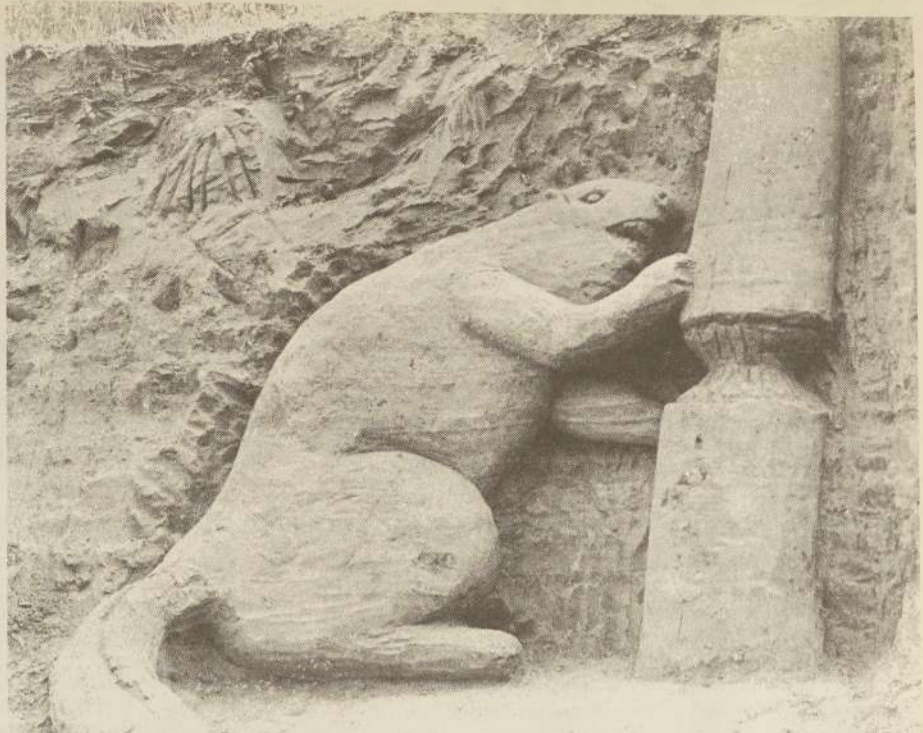
Instructor Les Tipton stressed the importance of making sculptures larger than

life with relationship to the contour of the hill by getting a general idea of the shape and working with, rather than against, the hill. "You've got to dominate the bank and kind of take charge," he added.

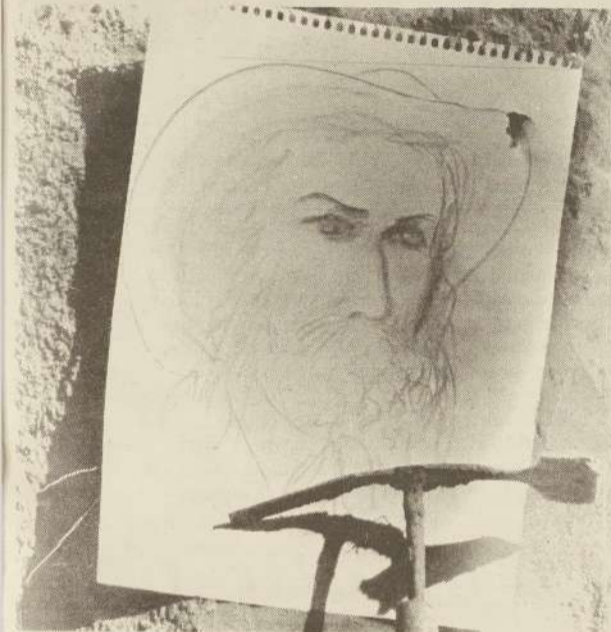
Students pick their own themes. Student Shirley Norton brought her eighth grade art scrapbook for pictures and ideas to do.

Traci Scott, maker of the Indian head, picked her design, "because it just appealed to me and looked fun and easy."

The dirt wall, located on John Adams and 14th in Oregon City, was donated by Lee Engineering. It was chosen because of its good visibility to the public.



COMMENTING ON THE chance of rain, sculpturist, Robert Waller remarked, "It would give my beaver a nice thick coat."



HOLD UP, PIONEER Joe Meek is held up on the dirt hill by a hoe, while his maker, Gene McBurney, slowly carves him out.

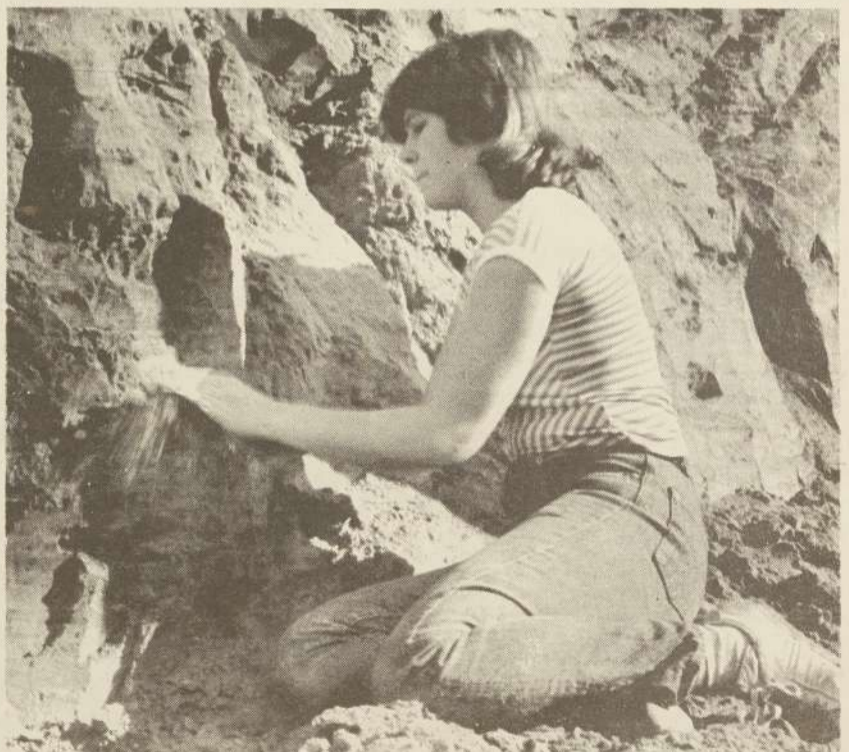
Story and photos by Duane Hiersche



STARTING OVER, ALVIN Schafer, with his pet cockatoo "Fritz" prepares sketches of his new idea for a totem pole.



ANN SAVAGE BRACES herself into the dirt as she chops at her carving of George Abernathy.



TRACI SCOTT CAREFULLY picks away at her sculpture of an Indian head in early phases of construction.

Wednesday, October 20, 1982

page 7

