

FT—Andy Rice, landscape architect for the Pauling Center project.

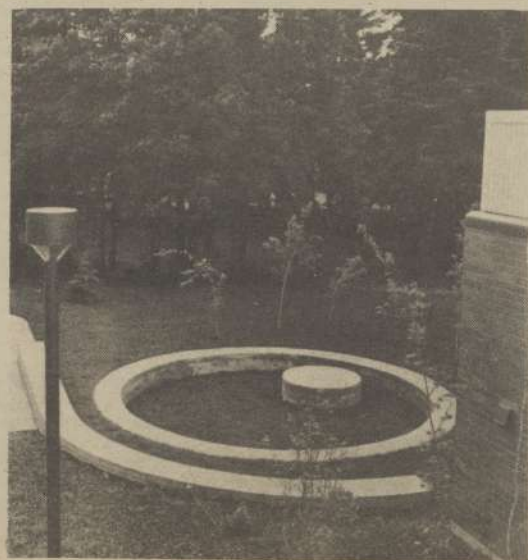
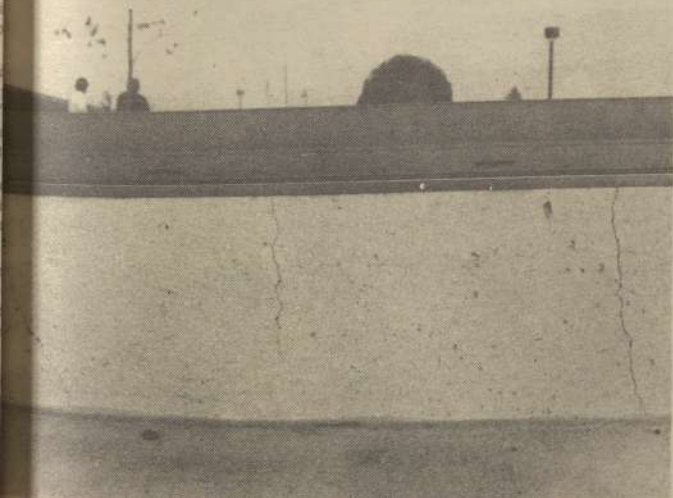
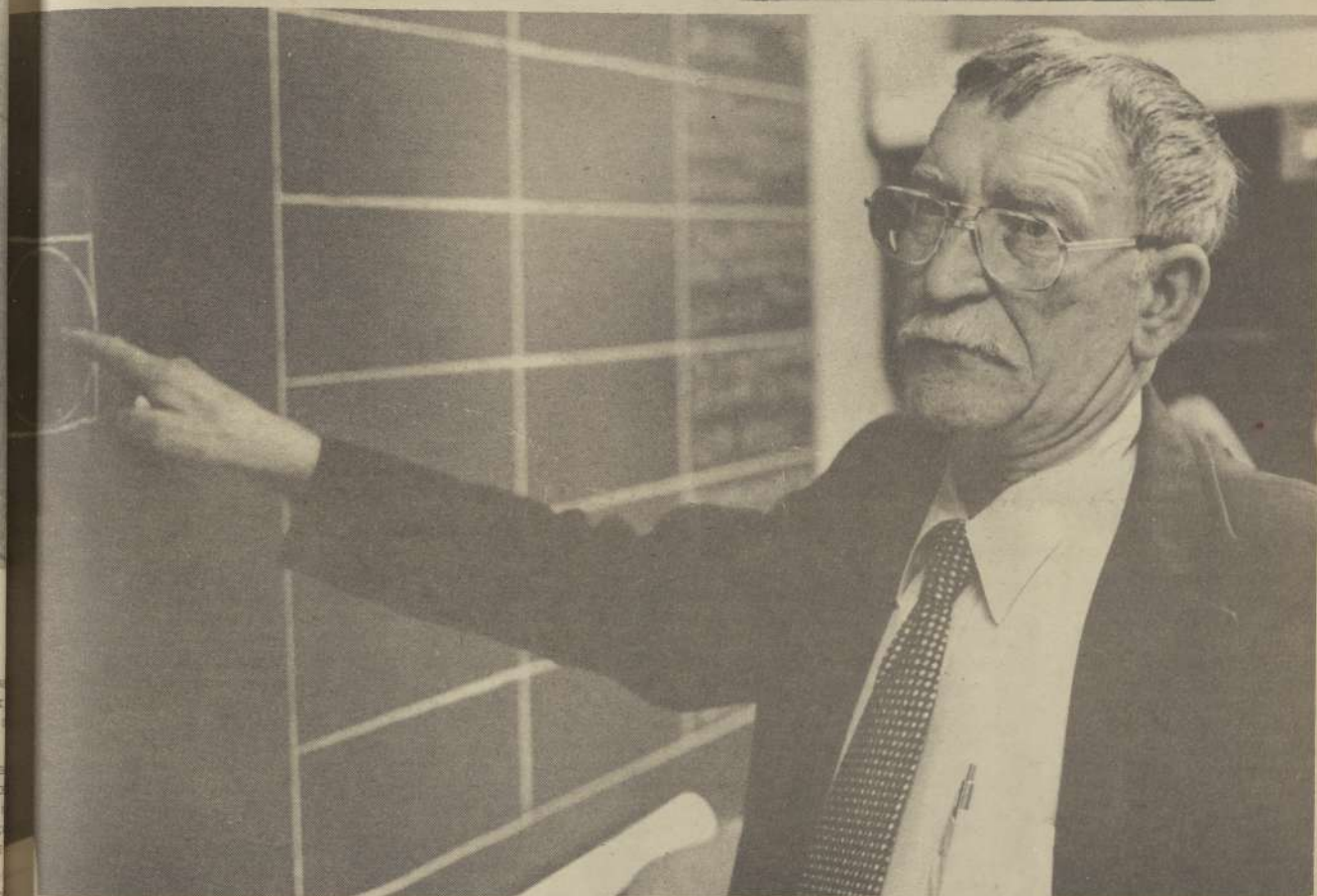
One of the major cracks in the Pauling Center courtyard. The crack runs from the marsh to the only cold joint in the courtyard.

Wayne Daigle, professional engineer for the city of West Linn, offers a con-
 opinion.

Don Fisher, the College facilities development and planning officer,
 sits the College's position.

LEFT—Cracking foundation in Pauling Center has been cited as a sign of
 poor workmanship.

RIGHT—Outdoor classroom designed by Andy Rice has had a continuing
 problem with poor workmanship.



Staff photos by Duffy Coffman

Wednesday, June 3, 1981

Page 7

