

briefs

2x4 \$2.10 per Inch \$16.80 total P.C.



Complete Exhaust Center
We'll beat any price in town on Exhaust work done here

Major Muffler

8:00 AM TO 5:30 PM DAILY
 9:00 AM TO NOON SATURDAY

812 MOLALLA AVE
 ORE CITY - NEXT TO TRADEWELL



656-3633

Mental health council members needed

The Clackamas County Mental Health Council, a governing board for mental health activities throughout the county, has council seats open.

The council is a governing board that oversees community services, consultation and education, corrections, drug programs, emergency services and specialized services for the mental health of the elderly. They would like some input from those in the 20-to-38-year-old group who are interested in social work.

The new council members would be going to council meetings, helping to govern the many programs and help-

ing with the input at the meetings.

Council meetings are on the fourth Monday of every month at Education Hall, Marylhurst Education Center. For more in-

formation on the job that could launch a career in social work, contact Nora Allred, 829-8347, Murial Brockman, 636-3985, or the Mental Health Center at Marylhurst, 655-8338.

Vice Pres. position now open

The College's Associated Student Government is now officially without a vice president. Neva Barker, who was the V.P. last term, has resigned from the position after an extended absence.

ASG President Eric Etzel said, "We are now taking applications for the job. Anyone who's interested should apply

at the Student Activities office. We've had a few people apply already, but the position is by no means closed."

Barker did not register for school this term, and has attended no ASG meetings or functions. Late in December, Barker did accept a check for \$150 from the ASG. The money was to go toward her tuition. "I've talked to Neva about it, and she'll be billed by the school," said Etzel.

Town Center

Since registration began Jan. 5 for the College's Employee and Management Program, offered in conjunction with the new Clackamas Town Center shopping mall, the response has been described as "tremendous."

Program Coordinator Mary Haley commented, "Of the 600 anticipated applicants, 178 have already registered."

The 20-hour program deals with the principles of customer relations, cashiering, salesmanship, and the procuring and securing of jobs. The fee is \$20 and classes are being held at Rowe Junior High in Milwaukie. Classes began Monday and will be repeated each week until Feb. 23. Advance registration is required.

According to Haley, a majority of the merchants at the Clackamas Town Center are quite supportive of the program. Students who satisfactorily finish the course will receive a certificate of completion, which can be used when applying for work at one of the 180 stores at the mall. The new Clackamas Town Center, located near Sunnyside Road and 82nd Avenue, is scheduled to open March 1.

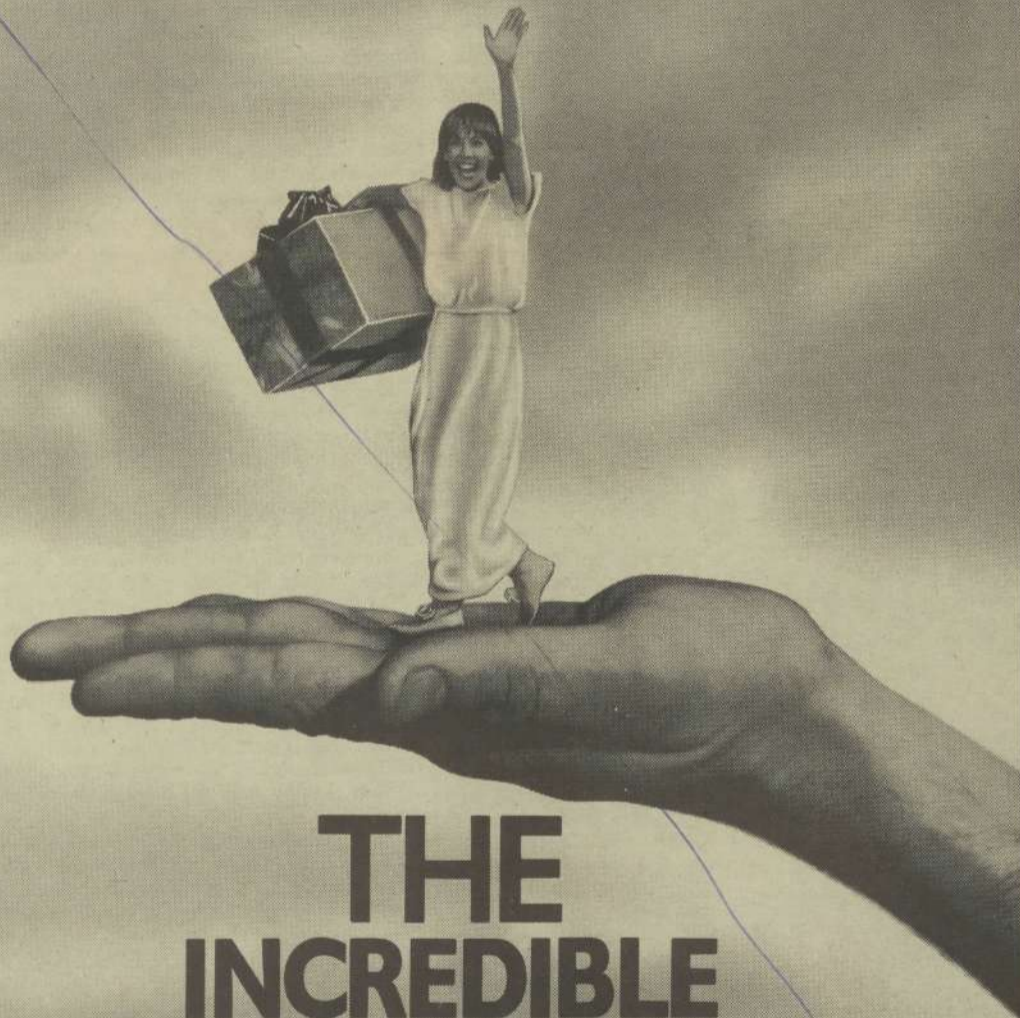
"Although the course does not guarantee jobs, it will provide training for those who do not have actual retail experience," Haley said.

Instructors include Dave Apple, customer service; Kathy Killin, cashier operation; Ron Feightner, salesmanship and interviews; and Suzie Butler, job readiness.

The College also has contracted for use of classroom space at the Town Center. The space will be used for classes other than the employee training program.

LILY TOMLIN IN AN EPIC COMEDY

(GIVE OR TAKE AN INCH)



THE INCREDIBLE SHRINKING WOMAN

LILY TOMLIN · CHARLES GRODIN · NED BEATTY · A LIJA Production
 "THE INCREDIBLE SHRINKING WOMAN"

Written by JANE WAGNER · Music by SUZANNE CIANI · Produced by HANK MOONJEAN
 Executive Producer JANE WAGNER · Directed by JOEL SCHUMACHER · A UNIVERSAL PICTURE

Read the JOVE Book · Copyright © 1980 by Universal City Studios, Inc.

PG PARENTAL GUIDANCE SUGGESTED
SOME MATERIAL MAY NOT BE SUITABLE FOR CHILDREN

OPENING JANUARY 30 AT A THEATRE NEAR YOU

Clackamas Community College

4x10 Cass

Page 1

