

New Willamette Falls power plant

By DAVID HAYDEN

Portland General Electric recently announced a proposal to add two turbines, requiring 17,000 cubic feet per second of water, to its existing Willamette Falls power plant.

A committee of 21 citizens of Oregon City, West Linn and Gladstone has been formed to study the environmental impact of the proposed plant. PGE President Robert Short has promised to abide by the committee's decision.

Major opposition to the new turbines has centered around the threat to steelhead trout and salmon. Although PGE currently shuts off its turbines for ten days in the fall and inter-

mittently in the spring, the turbines.

Larry Korn, Freshwater Fish Coordinator, stated, "the Willamette River and its tributaries above the falls are the second largest producer of steelhead and salmon in the state." "That's why we're so concerned with the impact of the proposed plant."

PGE is currently experimenting with a method to keep fish away from the present turbines which it hopes to test soon.

The proposed plant would also cause problems concerning the amount of water going over the falls since more would be diverted from it. When the flow over the falls is low the fish

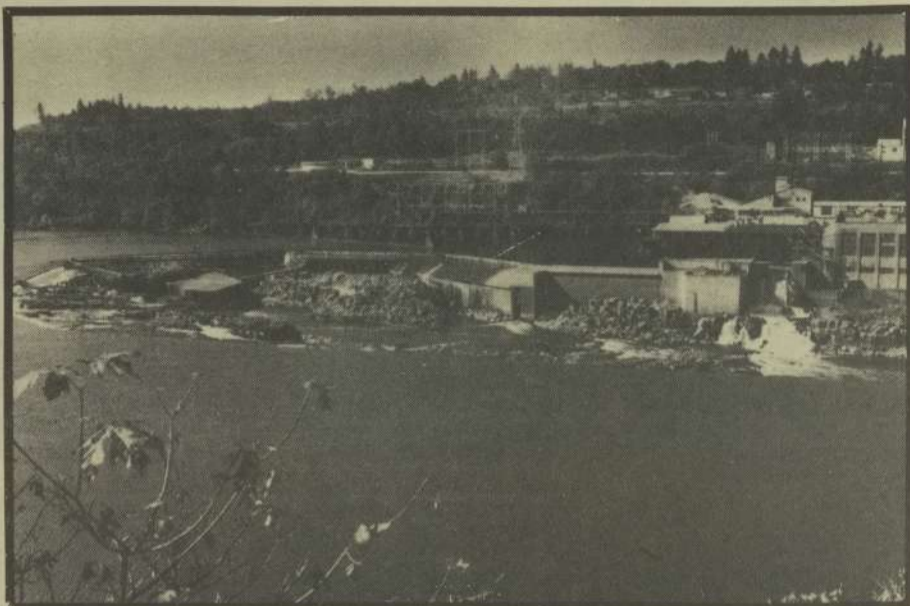
tend to be pulled directly into the turbines.

The proposed plant would provide Oregon City, West Linn, and Gladstone with 29

percent of their electrical needs.

Robert Yott, Project Manager for the proposed plant said, "We're trying to

become a better Corporate Citizen." "Our focus is to get out to the public to get them involved in the decision-making process."



LOW WATER, NO WATER--Willamette Falls is the proposed site for a PGE built and operated spillway and hydroelectric turbines. Staff photo by Duffy Coffman

Health insurance offered at College

In an effort to provide students with an alternative to the high cost of individual health insurance, the College has arranged to provide a group plan to students. Commenting on the plan, Bonnie Hartley-Linse, Student Health Nurse, said, "I encourage all students who are not otherwise fully insured to take advantage of it."

"This program provides the needed coverage to take the sting out of anything that might happen to a student," Hartley-Linse said. The group plan, provided through Great

Republic Life Insurance Company will cover both accident and illnesses. Its basic illness coverage will provide a lowered deductible of \$25 compared to last year's policy.

"I caution all students to read the brochure and make sure they understand what it doesn't cover as well as what it does," Hartley-Linse said.

The College also offers a basic policy for \$3 that it recommends for all students enrolled in high risk classes such as welding, machine shop and P.E.

ASG holds meeting

By DANA HAYNES

ASG President Eric Etzel promised support of citizens' efforts to defeat Ballot Measure Six and secure voter approval of the College's first tax base.

Bill Anton, representing the Citizens in Support of a Community Tax Base, outlined reasons for approving the tax base at last Thursday's meeting of the ASG.

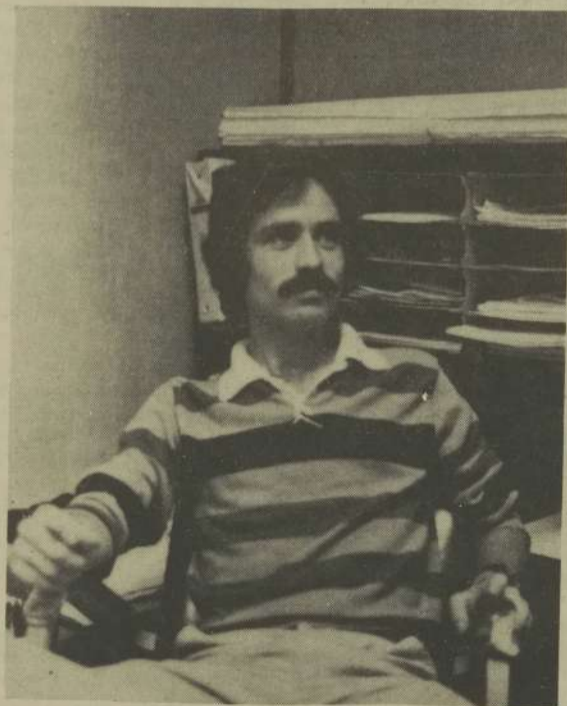
Measure Six would cut school funding from \$7.5

million annually to \$1.4 million. The College receives 54 percent of its funding from local property taxes.

"We need volunteers to sign postcards explaining this measure. We'll ask everyone to write ten postcards and send them out to friends," said Anton. Phone banks have been set up in six towns in the county, and pamphlets have been made.

To fund the projects, the CSCTB has scheduled a sausage and beer feed/Gong Show on Oct. 10, and a pub crawl/dance on Oct. 23.

Other business on the agenda for the meeting included the upcoming senate elections, Oct. 14-17. Deadline for the petitions was changed to Oct. 10. Petitions are in the Student Activities Office.



Staff photo by Sue Hanneman

Outdoor Program offers resources

By DAVID HAYDEN

The Outdoor Wilderness Program, sponsored by the Associated Student Government, is offering three major services as a resource to students, faculty and the community.

The Outdoor Program provides brochures, maps and magazines on a lending basis; films, guest speakers and exhibits occasionally, and a sign-up system for participant originated trips.

Loosely based on the na-

tionally recognized University of Oregon Wilderness Program, the Outdoor Program is new this year, and expecting growth, Kelly Sullivan, Outdoor Program Director, commented, "We had our first meeting and had a really great turn out."

One of the first trips to originate through the sign-up system is a Mt. Hood Cimb. The climb is expected to start Oct. 11 at 12 p.m. and take 10 hours to complete.

