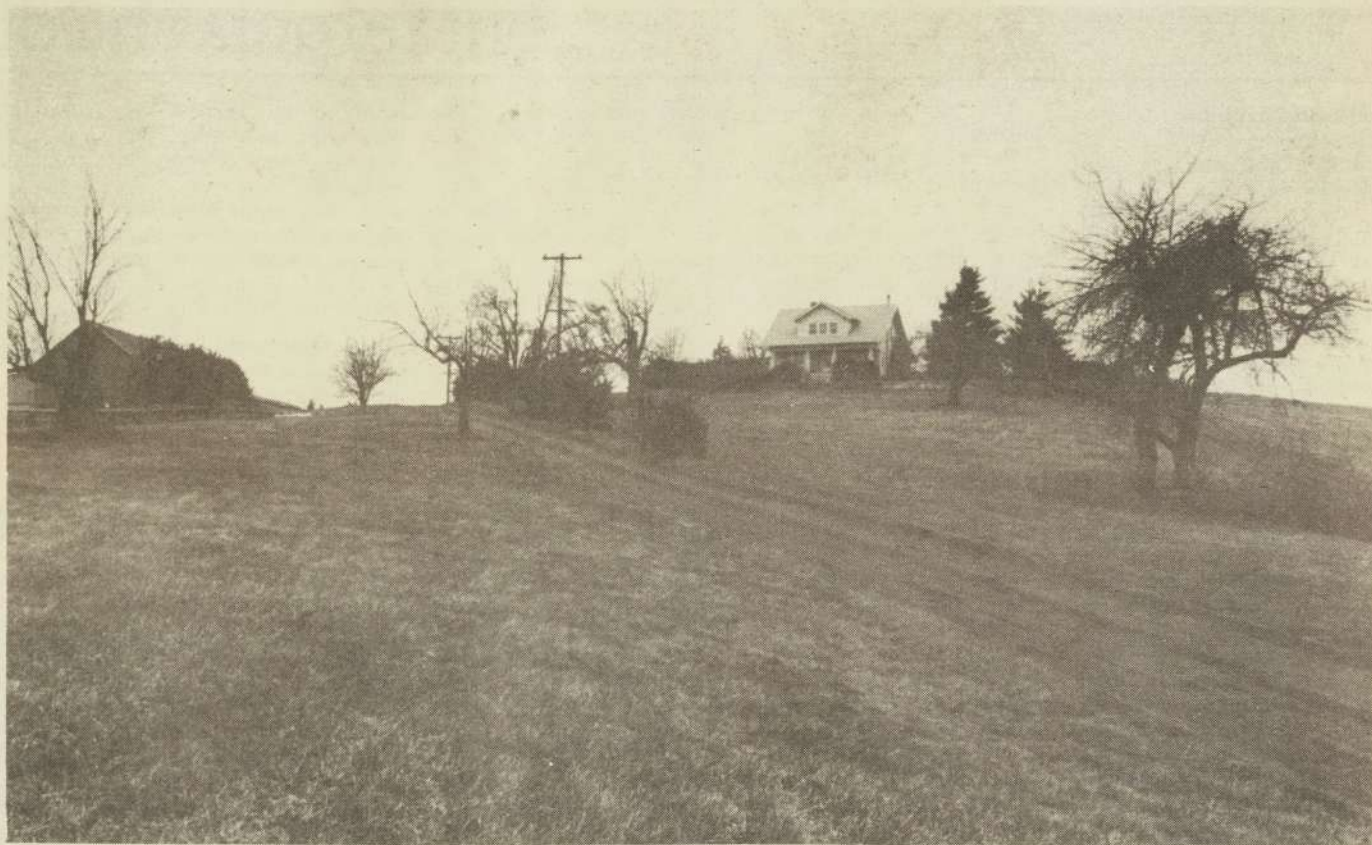




FAMILY PORTRAITS — (Clockwise, from top left) A rustic stone house was constructed in 1908, by Frank Polehn. That building sheltered the Frank Polehn family for one winter. It then became living quarters for hired help during the 1930s. A side view of the farm's nucleus reveals part of a pear orchard, a machine shed, and small rental cabin, as well as Polehn house. The white house stands proudly on the hill. This building has sheltered four generations of Polehns. Richard's Polehn's daughters, Clara and Lois, during the early part of their lives. This marker identifies Polehn Farm by Redland Road. Richard and Gladys during the later part of their lives.



Story by Elena Vancil

Photos by
Duffy Coffman

