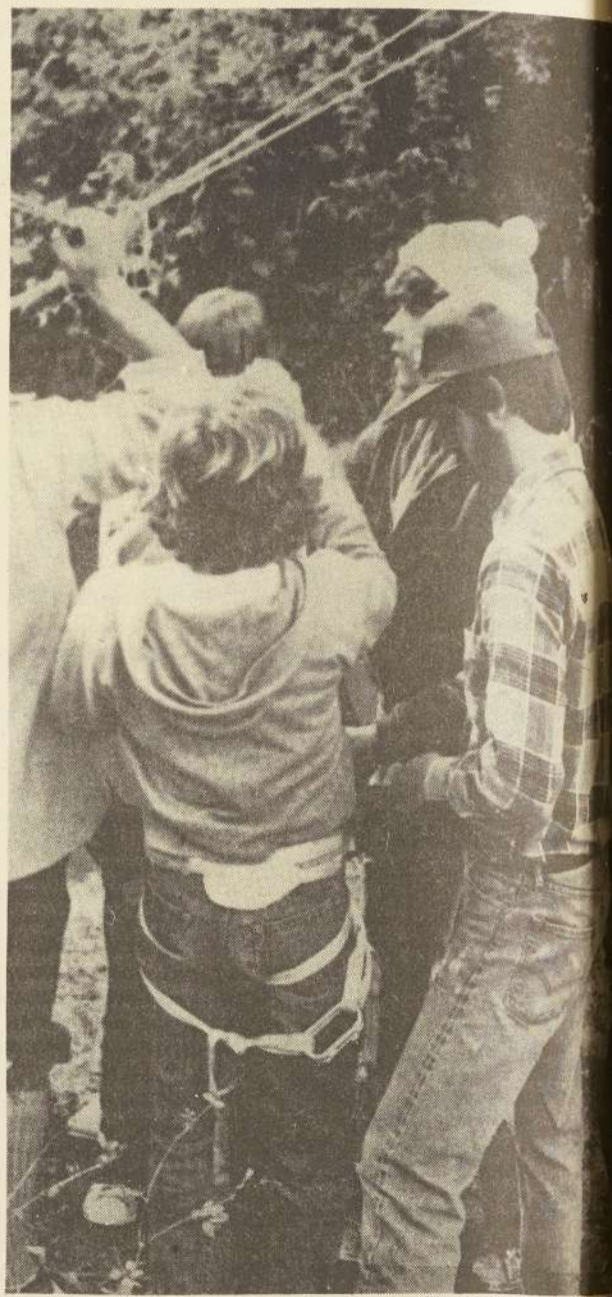
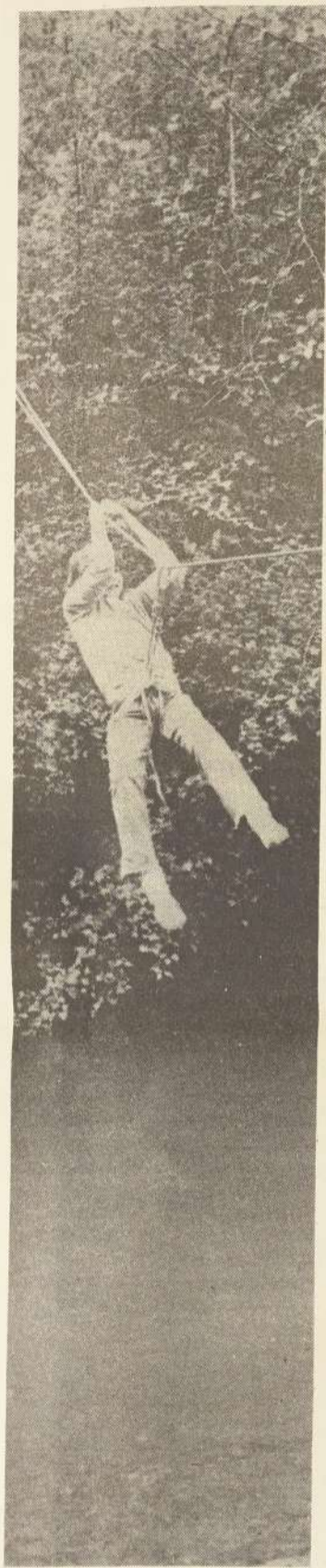


College students provide outdoor guidance to local school children



Photos by Lorraine Stretton

During the week of May 8 through 12, 20 College students from the Outdoor School Counseling course spent a week at Camp Nate Creek with nearly 100 students from Bilquist Elementary School in Milwaukie.

The College students helped the children explore and experiment with the outdoor environment. Despite rainy weather, campers and counselors participated in environmental learning experiences during the day and spent evenings around the campfire.

Above, one of the challenges of the counseling week was on Wednesday when each College student had four to five campers to keep busy for four hours. These campers are on their way to a "lost" area of the camp where they will discuss survival skills. Blindfolds were used to help create an illusion of being lost in the wilderness.

Upper left, campers cross Nate Creek during a mini-class in rock climbing and mountaineering taught by counselor Turtle (Keith Ertell).

Top, cabin group Venezuela performs a skit which left counselors Ace (Steve Shirley), Flash (Jim Schreiber), and teacher Goose (Ron Jones) with full glasses of water on their backs.

Far right, counselors Zuma (Jon Anderson) and Ace (Shirley) prepare students to cross creek.

Right, Pub (Carol Ramsey) discusses the day's activities with a camper before dinner.



D50 Illuminant, 2 degree observer

	1	2	3	4	5	6	7	8	9	10	11 (A)	12	13	14	15
L*	39.12	65.43	49.87	44.26	55.56	70.82	63.51	39.92	52.24	97.06	92.02	87.34	82.14	72.06	62.15
a*	13.24	18.11	-4.34	-13.80	9.82	-33.43	34.26	11.81	48.55	-0.40	-0.60	-0.75	-1.06	-1.19	-1.07
b*	15.07	18.72	-22.29	22.85	-24.49	-0.35	59.60	-48.07	18.51	1.13	0.23	0.21	0.43	0.28	0.19
Density										0.04	0.09	0.15	0.22	0.36	0.51

Golden Thread