

FTE down; Hakanson asks for spending cuts

drop of 100 full time equivalent or (FTE) from a projected term enrollment of 913 to an actual enrollment so far of 813. This will cost the College \$110,000 in state reimbursement funds. According to John Hakanson, College president, this will create a budget deficit that will have to be made up by tightening and lowering expenditures. FTE is a standard by which enrollment is measured for the purpose of receiving state funds. One FTE is defined as a student taking 15 hours for three consecutive terms or 45 hours per year equals one FTE for college transfer programs. In all other programs, 650 contact hours per year is equivalent to one FTE. This FTE figure can also be made up of two part-time students, four quarter time students or 15 one hour

By Happie Thacker
Of The Print

Expected income from projected FTE figures is used in making the College's budget each year. "There is no good way for institutions to project FTE," said Adams, registrar. "We look at the history, programs we offer, the employment outlook and the weather." When we make up a budget we have to make two guesses, one on income and one on expenditure," Hakanson said. The administration is working hard to increase enrollment in an attempt to minimize the dollar loss. Enrollment won't pick up all at once but it will pick up, predicted Hakanson. The enrollment management committee is working with high schools, old people, vets and women and they are picking up people five, ten and two at a time, he said. "We have a sound institution and good programs and our enrollment will go up," said Hakanson. There is also some concern over enrollment figures for next year.

The predicted FTE of 3,590 and an enrollment of 3,100 means they are looking for ways to increase enrollment by over 200.

The school is expected to stay pretty close to the original enrollment according to Adams.

"FTE is a magic number to get money from the state," he said. "And as long as you predict accurately you get the money. If you predict 3,000 and enroll 2,800 then you get \$2,800. If you predict 3,000 and enroll 3,300 you only get \$3,000.

"We go over the prediction then we educate those people and get the money back from the state."

Student activities will be among the first to suffer from a drop in FTE. The student activities budget, which includes student government, student publications and all events sponsored by the government, is funded directly by FTE funds.

According to Jim Roberts, director of student activities, and student publications receives \$10.48 from every FTE the school enrolls.

"I project the budget based on estimated FTE and other income such as that from the game room, money from vending machines and income from dances and other activities," said Roberts. "We just have to make sure we have the money in the bank to cover losses (when FTE is lower than projected)," he said.

"I am confident that we can increase enrollment spring term next year too," said Hakanson in a memo to the staff, ASG members and senators.

"I am showing confidence in the staff and feel that they won't run out and spend everything in the budget."

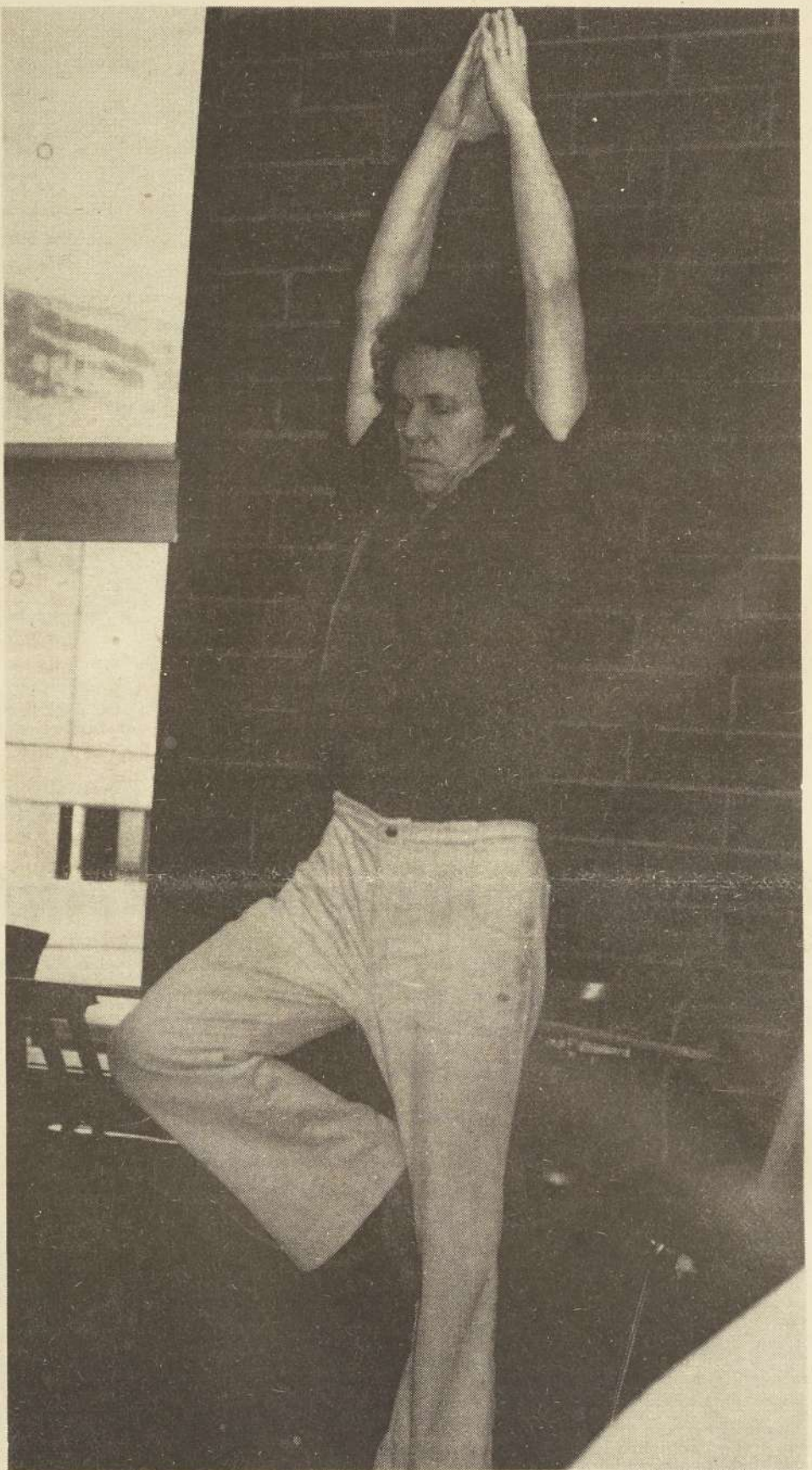


Photo by Brian Snook

Counselor Vince Fitzgerald practices his technique during the first "Yoga for Lunch" session held Tuesday, April 4 in Barlow 151. The Yoga for Lunch bunch will meet Tuesdays and Thursdays from noon to 1 p.m. and is designed to help students, faculty and staff relax and energize their minds and bodies.

Budget passes on first attempt

For the fifth time in the College's history it has passed its budget levy on the first attempt. The budget passed by 898 votes, with two precincts not reported as of press time.

"It passed because of the information campaign and media coverage," said Howard Fryett, assistant to the president. "Also because of citizen participation and people like Anna Payne who went door-to-door and Ben Hansen who did a lot of editorial work."

"It was a lot of hard work" that passed the budget, said Dr. John Hakanson, college president. "12,000 to 15,000 people were contacted by telephone and the Clackamas Community College Foundation sent out informative and exortive material."

Percentage-wise the polling place with the most positive response was Rosevilla View Manor, 124

yes to 13 no, as it has been many times in the past along with Willamette View Manor, 156 yes to 20 no. In all there were 7,891 yes votes and 6,997 no votes.

The most unfavorable response was from Eagle Creek School with 78 yes and 150 no.

This is the first time in the state's history that the rate-based serial levy proposal has been sent to the voters and it is encouraging to many that it passed on its maiden run.

"This demonstrates that it can be passed and there will be a great deal of interest in it in coming years," Hakanson said.

"At least in Clackamas County we expect other educational districts to try the same thing," Fryett said, "particularly since we were successful the first time out."

CLACKAMAS COMMUNITY
COLLEGE ARCHIVES

