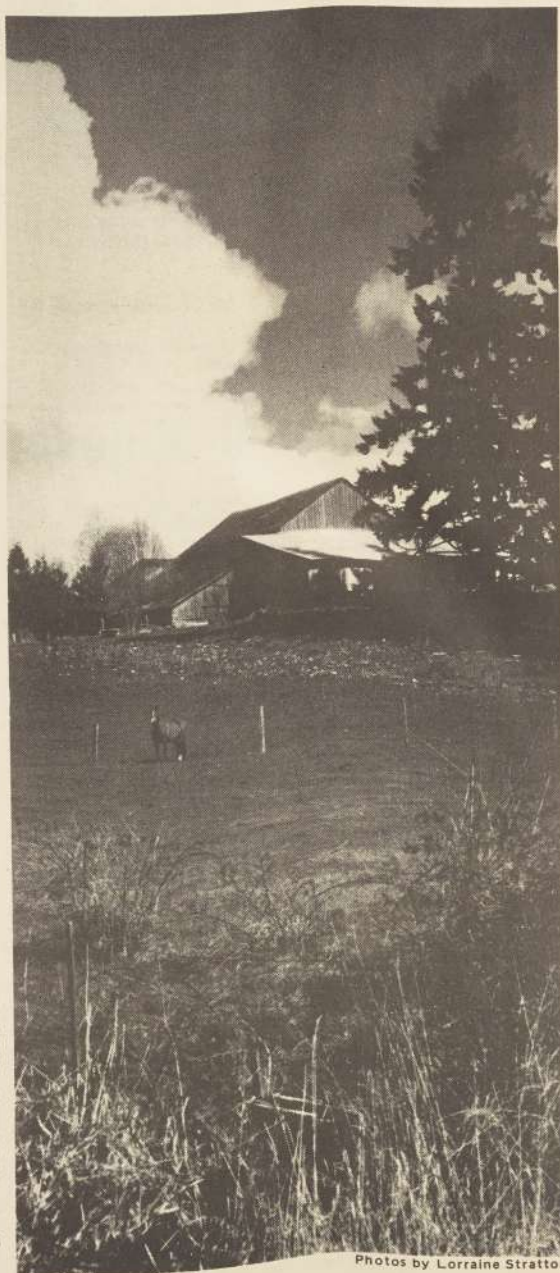
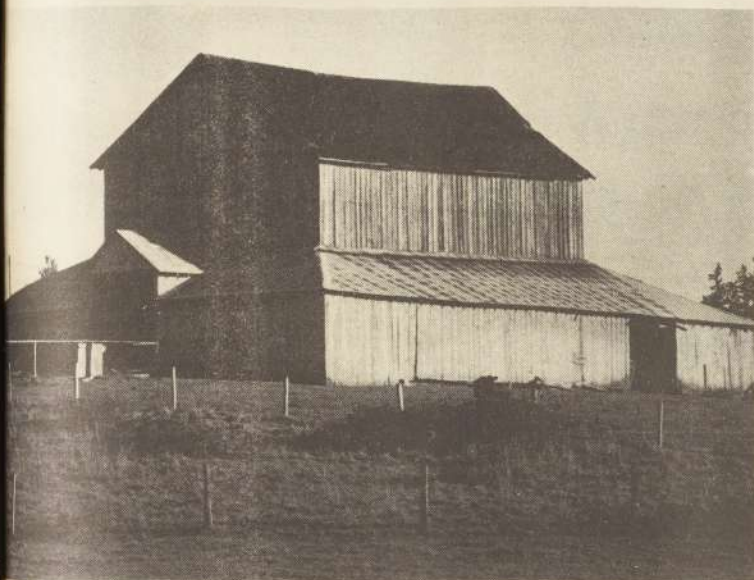


# Beautiful barns beside Beavercreek byways



These barns were all photographed within a seven-mile radius of Beavercreek, five miles east of College on Beavercreek road. To see them can be short enough to catch during a couple of break between classes or enough for a Sunday drive. Length depends on how many roads you care to explore. Roads are well marked with posts. On clear days Mt. Hood, Saint Helens and Mt. Adams are visible from many points in area.



Photos by Lorraine Stratton

