



THE life, the value, the beauty of your home, depend on the care you give it. Weather-beaten and warped siding, cracks and open joints are forerunners of decay.

Many property owners neglect to look for such signs, judging their houses and buildings by general appearances only.

It is good business to make regular inspection of your property, and to use paint of good quality, which is the surest preventive of decay.

Through the varying conditions of weather in all their extremes, FULLER Paint has proved both its preserving and beautifying qualities—a Pacific Coast Product for Pacific Coast requirements.

71 years of paint manufacturing experience are back of every brushful of FULLER Paint.

Some of the FULLER Products

HOUSE PAINT DECORET—combined stain and varnish in all shades for refinishing furniture, etc.
 FLOOR PAINT
 PORCH and STEP PAINT
 SHINGLE STAINS
 SILKENWHITE ENAMEL —For interior woodwork.
 VARNISHES
 DEKORATO—the Sanitary Kalsomine
 AUTO ENAMEL

W. P. Fuller & Co.

1849-1920



Northwest Branch Houses at Portland, Seattle, Tacoma, Spokane, Boise

Look Up a FULLER DEALER in Your Town

A CHEERFUL HOME-COMING

Home means comfort and good cheer when there is a CALORIC FURNACE in the basement.

Your slippers, pipe, favorite reading and the CALORIC are a combination that make you forget the howling wind and drifting snow. And how the wife and children appreciate such a home—warm and comfortable in every room.

More than 76,000 satisfied users testify to the splendid success they have had with the



This is the furnace which has revolutionized heating. Instead of using numerous pipes and registers, it heats the entire house through only one register. It is therefore easily installed in new or old houses, usually in one day, without interfering with your present heating arrangements.

The CALORIC heats all types of homes up to eighteen rooms, also churches, stores, factories, halls and other buildings. It burns coal, coke, wood, gas or lignite, and, because of special patented features, saves from 1/3 to 1/2 your fuel. The CALORIC is sold under the Monitor Iron-clad Guarantee, which insures the purchaser thorough and economical heat.

Call on us, or write for the new CALORIC catalog.

W. L. Darby & Co.

Manufactured by THE MONITOR IRON WORKS COMPANY, CHICAGO, ILL.



Kill That Cold With

HILL'S
CASCARA QUININE
 FOR Colds, Coughs AND La Grippe
 BROMIDE

Neglected Colds are Dangerous

Take no chances. Keep this standard remedy handy for the first sneeze.

Breaks up a cold in 24 hours—Relieves Grippe in 3 days—Excellent for Headache

Quinine in this form does not affect the head—Cascara is best Tonic Laxative—No Opium in Hill's.

ALL DRUGGISTS SELL IT

WEST AND SOUTH TO GAIN POLITICALLY

Census Figures Indicate Substantial Gain in Representation in Congress.

Washington.—Examination of the final census figures of the country, which place the total population of the continental United States at 15,683,108, indicates that the west and the south proportionately will gain more in a political way than the east or middle west through increased membership in the house of representatives, more votes in the electoral college and in larger delegations to the national political conventions.

As a result of the increase of 13,710,842 in population during the past ten years, 59 new seats could be added to the house. Should the present membership of 435 be left unchanged by increasing the basis of apportionment there will have to be a transfer of 13 seats, now held by 12 states, to nine other states.

For the last half century the precedent has been to increase the size of the house so as to prevent loss of existing representation by any state.

If this precedent is followed this year, five additional representative seats must be given to California, four each to New York, Ohio, Pennsylvania and Michigan; three to Illinois and Texas; two to Massachusetts, New Jersey and North Carolina, and one each to Alabama, Arizona, Connecticut, Georgia, Maryland, Montana, New Mexico, Oklahoma, Oregon, South Carolina, Tennessee, Washington, West Virginia, Wisconsin, Virginia, Arkansas and Minnesota.

Congressional leaders are strongly opposed to any larger increase in the house, as they regard the present membership of 435 as too unwieldy. The present apportionment basis is 211,877 inhabitants, or its major fraction, to the congressional district.

By holding the house membership to 435, gains would be distributed with three to California, two to Michigan and Ohio, and one each to Connecticut, New Jersey, North Carolina, Oklahoma, Texas and Washington. To offset these gains, Missouri would be forced to lose two representatives, while Indiana, Iowa, Kansas, Kentucky, Louisiana, Maine, Mississippi, Nebraska, Rhode Island, Vermont and Virginia would lose one each. All other states would retain their present numerical delegation in congress.

APPARENT ERROR IN RATE RAISE CHARGED

Topeka, Kan.—An assertion that the interstate commerce commission made an apparent error of \$192,853,696 in the calculation upon which it fixed the freight rate increase on western roads to give the roads a 6 per cent return was made in an opinion granting a modified 30 per cent increase in Kansas intrastate rates by the Kansas court of industrial relations, handed down here.

"The error is of such magnitude as to challenge attention," the opinion stated, "and brings up for consideration whether the basis used in the analysis is correct. It may be said here that the identical analysis applied to other groups show a result within a fraction of 1 per cent of the rate increase ordered by the interstate commerce commission."

WOOL MEN GET \$460,000

Excess Profits Available for Distribution to Producers.

Washington.—Through closing up the government's wartime operations in the wool market the department of agriculture reported \$460,000 has become available for distribution to some 100,000 producers who grew the 1918 clip.

The amount has been returned by dealers who bought the wool under government supervision and were required by regulations to return excess profits made in the process to the growers.

Campaign Funds Pay Income Tax.

Washington.—Contributions to political campaign funds are taxable, Commissioner of Internal Revenue Williams declared. In a statement he advised members of all parties that they will not be allowed to deduct amounts given to campaign funds from their income tax returns.

Will Not Reconsider Dry Decision.

Washington.—The supreme court refused to reconsider its decision of June 7 last sustaining the validity of the prohibition amendment and provisions of the enforcement act.

North Dakota Dry Agent Held.

Fargo, N. D.—R. B. Leady, recently appointed prohibition enforcement group chief for North Dakota, was arrested on a charge of violating the prohibition laws.

Reduced Prices on Tires and Tubes

We are overstocked on tires and tubes and we are going to reduce our immense stock at once, making prices that will interest every car owner. Beginning—

Saturday October 8

and continuing for ten days, the prices quoted here will be in effect on tires and tubes now in stock.

GOODYEAR TIRES Reduced Price List

30x3 plain	\$16.71
30x3 Diamond tread	18.54
30x3 1/2 Diamond tread	22.13
32x3 1/2 Diamond tread	26.37
32x4 Diamond tread	\$35.21
34x4 Diamond tread	37.76
34x4 1/2 Diamond tread	50.14
35x4 1/2 Diamond tread	52.41
36x4 1/2 Diamond tread	53.20

GOODRICH TIRES Reduced Price List

30x3 Goodrich Safety	\$18.00
30x3 1/2 Goodrich Safety	21.86
32x3 1/2 Goodrich Safety	26.42
32x4 Goodrich Safety	\$34.67
33x4 Goodrich Safety	36.37
34x4 Goodrich Safety	37.31
34x4 1/2 Goodrich Silvertown Cord, ribbed tread	59.98
34x4 Goodrich Silvertown Cord, safety tread	55.81

FIRESTONE TIRES (Fabric) Reduced Price List

30x3 Plain tread	\$16.62
30x3 Non Skid tread	18.42
30x3 1/2 Plain tread	19.86
30x3 1/2 Non Skid tread	22.09
32x3 1/2 Non Skid tread	26.32
32x4 Non Skid tread	35.19
34x4 Non Skid tread	37.75
30x3 1/2 Firestone Cord, ribbed	\$32.16
30x3 1/2 Firestone Cord, non skid	33.98
32x3 1/2 Firestone Cord, ribbed	39.75
32x3 1/2 Firestone Cord, non skid	41.94
34x4 Firestone cord, ribbed	53.24
34x4 Firestone Cord, non skid	56.12

Woodson Bros. Garage

Did you ever face a beating storm in a **FISH BRAND Reflex Slicker?** Oh Boy! that's protection for you. Look for the Reflex Edge. **A. J. TOWER CO.** ESTABLISHED 1910. BOSTON, MASS. **FISH BRAND**

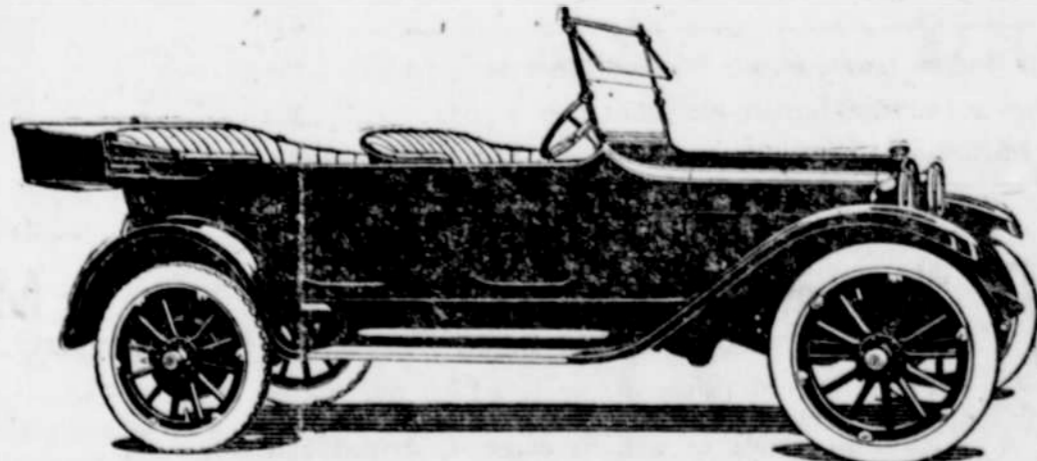
Knowles & Graber

COTTAGE GROVE, OREGON

Hardware and Furniture

DODGE BROTHERS MOTOR CAR

—adds more to the convenience, comfort and enjoyment of the entire family, at a less cost. The insistent demand—*quality*.



We are now taking orders for spring delivery

N. J. Nelson, Jr., Dealer

401 Main

Phone 64

Cottage Grove