

BROOMS should be buried.



Twentieth century progress demands that housewives be given a



September Thos month

The Thos Electric Cleaner will do anything and everything a good vacuum cleaner is supposed to do. It is the most inexpensive to own and economical to operate. Sold by cash or easy payments.

A. L. WYNNE
Plumbing and Supplies
Electric Work and Supplies
Opposite Postoffice

HOME PRODUCTS

By patronizing a Home Industry, you are helping to build up your own community. By building up your community, you are benefiting yourself. We are confident you are benefiting yourself in using

"STERLING" COMPOUNDED FEEDS

It is an undisputed fact that honestly and accurately compounded feeds give better results than any straight grain feed. When we started in this business we were thoroughly convinced that the public cares as much for quality as for price. Believing this, our motto has been "A Higher Feed Value for Less Money." And because we have constantly kept this in mind, "Sterling" Compound Feeds are recognized as being all the name implies.

Our specialties are horse feed, hog feed, and dairy feed, for which we make the claim "There are none better."

Call and see us, and by comparing our prices with those of other compounded feeds, you will find opportunities and bargains here that you can't find anywhere else.

STERLING FEED CO
WEST MAIN AVE.

Whatever kind of job printing you have, The Sentinel can handle it for you.



Two of the most homelike hotels in Portland, located in the heart of the shopping and theater district. All Oregon Electric trains stop at the SEWARD HOTEL, the House of Cheer. Excellent dining room in connection.

The HOTEL CORNELIUS, the House of Welcome, is only two short blocks from the Seward.

Our brown busses meet all trains. Rates \$1.50 and up.
W. C. CULBERTSON, Prop.

PEARL OIL
(KEROSENE)
for HEAT

STANDARD OIL COMPANY
CALIFORNIA

JUNK
WE WANT ANY KIND AND ALL YOU HAVE
Cottage Grove Junk Company
24 Pacific Highway Phone 5

OREGON NEWS NOTES OF GENERAL INTEREST

Principal Events of the Week Briefly Sketched for Information of Our Readers.

As a result of washouts the McKenzie pass highway is reported to be impassable.

It is estimated that the total registration of Clatsop county will be less than 7000.

The Lorane valley pear crop has been sold, the total being 76 tons, all Bartlett's.

More than 100,000 automobiles were registered with the secretary of state up to October 1.

The total attendance of the Albany public schools is 1208, a gain of 126 over last year's enrollment.

Portland bank clearings for the month of September exceeded those of Seattle by nearly \$5,000,000.

The Columbia Basin Alfalfa Growers' association has completed permanent organization at Hermiston.

Deputy State Treasurer Richardson has resigned. James Crawford of the inheritance tax department will succeed him.

According to the report of the county superintendent, every school district in Crook county is supplied with a teacher.

Experts have been trying to open the safe in the Bend postoffice the past week, using everything but a drill or nitro-glycerine.

During the recent good weather one troller fishing close to the mouth of the Columbia river caught 1500 pounds of fall chinooks.

Space for exhibits at the Wasco county fair is at a premium. Workmen have started the construction of the main pavilion.

Seven carpenters are at work hewing with timbers the twin tunnels between Hood River and Mosier on the Columbia river highway.

Three Eugene public school buildings are reported overcrowded and the others are filling up rapidly. The high school is also congested.

Because of the recent heavy rains the Linn county fair, which was to have been held this week, beginning Tuesday, was called off.

Residents of North Roseburg are complaining of the odor of prune juice which comes from three prune packing plants in the vicinity.

Fire has destroyed the prune evaporating plant of F. A. Kurtz, four miles from Salem. The loss is estimated at \$17,000 with \$5000 insurance.

Philomath college has opened with a 50 per cent increase over the first day's enrollment last year and nearly 100 per cent over two years ago.

The Umatilla agency will send a delegation of 40 children to the Chemawa school this year, the largest number ever sent from the agency.

Keskinne Wood, of Portland, was appointed legal head of the admiralty department of the shipping board, to succeed Charles F. Dutch, resigned.

Medford merchants have made Wednesday of each week a bargain day at which goods will be offered at a reduction to attract out of town buyers.

Klamath Falls ministers have determined on a moral clean up of the city and have announced an intention to put a municipal ticket in the field.

H. G. Hayes, justice of the peace at McKenzie bridge, has pleaded guilty to the charge of killing deer out of season and been fined \$100 and costs.

Providing the weather continues good for two weeks the Pacific highway north and south of Roseburg will be put in good condition for winter travel.

The public service commission has denied the request of the city of West Salem for authority to extend a street over the tracks of the Southern Pacific railroad.

The municipal employment bureau of Salem has issued a call for prune pickers. Although badly damaged, much of the crop can yet be saved if pickers are secured.

A petition circulated at Medford to remove the county seat of Jackson county from Jacksonville has received 3681 signatures. The question will be voted on in November.

William Marshall, chairman of the state industrial accident commission, will lead the discussion of accident prevention at the Pacific logging congress at Vancouver, B. C.

Seven thousand acres of timber were bought Friday by the Deer Island Logging company, adjoining the present holdings of that concern at Deer Island, the deal involving \$1,500,000.

A total of \$8,400,200 will have been spent for dock improvements in Portland under the jurisdiction of the commission of public docks by November 30, 1920, according to the annual report of the commission.

Total deposits in the banks of Oregon on September 8, 1920, aggregated \$284,464,090.68, an increase of \$4,188,547.76 since June 30, 1920, but a decrease of \$3,977,233.25 since September 12, 1919, according to a report filed by Will H. Bennett, superintendent of banks.

NOTICE OF SHERIFF'S SALE ON EXECUTION.

Notice is hereby given that by virtue of an execution and order of sale issued out of the Circuit Court of the State of Oregon, for the County of Lane, on the 27th day of September, 1920, in the above entitled Court, L. M. Travis, plaintiff, recovered judgment against the defendants, John T. Steears and Mrs. John Steears, his wife, for the sum of \$182.08 with interest thereon at the rate of 6 per cent per annum from the 27th day of September, 1920, and the further sum of \$12.00 costs, which judgment was entered and docketed in the Clerk's office of said Court in said county on the 27th day of September, 1920, and said execution and order of sale to me directed commanding me in the name of the State of Oregon, in order to satisfy said judgment, interest, costs and disbursements, and the costs and expenses of and upon this writ, to sell the following described real property, to-wit:

Lots 4, 5 and 6, NE 1/4 of SW 1/4 of Sec. 10, Tp. 18, South Range 10 W. of the Willamette Meridian, Lane County, Oregon, containing 95.82 acres. Also beginning at the S. E. corner of Lot 4, Sec. 10, Tp. 18, South Range 10, W. of the Willamette Meridian, thence South 2 chains, thence South 69 degrees, West 2.85 chains, thence North 68 degrees, West 3.98 chains thence North 79 1/2 degrees, East to place of beginning, containing 1.21 acres, except a 2-acre tract deced by Thomas A. Steear to Lyle F. Paxton on the date of October 3, 1912, of the west end of lot 4, also excepting 53 of an acre transferred by Thomas A. Steear to Lyle F. Paxton by W. D. on the 23d day of April, 1914, from the above described premises, in Lane County, Oregon.

Now therefore in the name of the State of Oregon, in compliance with said execution and order of sale, and

in order to satisfy said judgment, interest, costs and disbursements, and the costs and expenses of and upon this writ, I will on Saturday, the 6th day of November, 1920, at the hour of one o'clock in the afternoon of said day at the Southwest front door of the Court House in Eugene, Lane County, Oregon, offer for sale and sell for cash, at public auction, subject to redemption as provided by law, all of the right, title and interest of said defendants John T. Steears and Mrs. John Steears, his wife, or any other person or persons claiming by, through or under them, or either of them, in and to said attached property.

FRED G. STICKELS,
08n5 Sheriff of Lane County, Oregon

In wet weather you can hold fast to your job if you wear a Fish Brand Slicker

DEALERS EVERYWHERE
A. J. TOWER COMPANY
ESTABLISHED 1936
BOSTON

Auto Repairing Carefully Done

We do not make any boastful claims of being the only ones who know how to repair cars, but we do claim that we have many regular customers who are boosters for us and who say things which it is pleasant to have said about us but which we would not presume to say for ourselves.

We realize that to hold and increase our auto repairing business we must do our utmost to please our customers, which can only be done by having the work done by efficient mechanics who have a pride in turning a job out right.

We do not claim that we never make mistakes but we do claim that we never made a mistake we aren't ready to make right. We will inspect your car carefully and advise repairs only where needed. No charge made for professional advice.

The West Side Garage

W. C. Applewhite, Proprietor Phone 14

Agents for the Buick, a car which even our modesty does not keep us from boosting as the best that can be had for the money

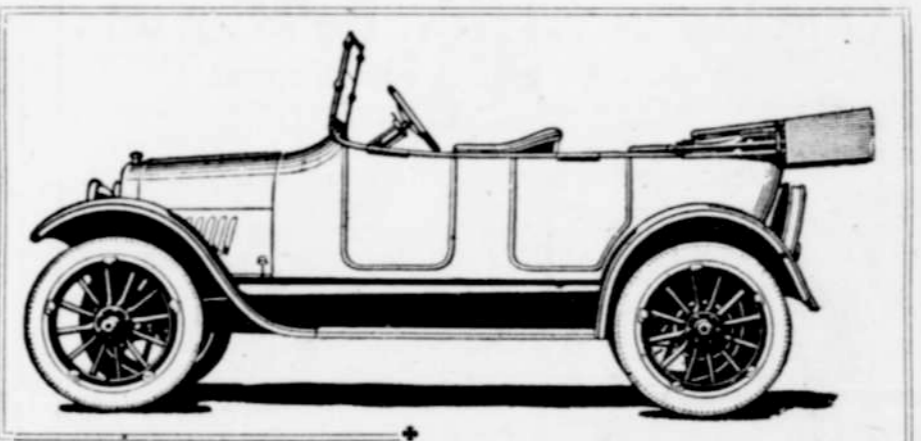
WATCH YOUR LABEL—IT WILL PAY YOU

CHEVROLET

Automobile Prices—Present and Future

Are All Automobile Prices on the Toboggan, or Has a Bear in the Market Attempted to Precipitate a Price War?

Q THERE ARE TWO CLASSES OF automobile manufacturers: First, those producing cars at an unwarranted margin of profit who can reduce retail prices at will. Second, those whose product is sold at a price based upon present manufacturing costs plus a normal profit to which any producer is entitled. A manufacturer who suddenly reduces the price of his car \$100 or more while manufacturing costs are increasing, confesses that either his prices in the past were excessive, or he is willing to chance an expected drop in the cost of materials to cover the loss due to a reduced retail price.



Prices of the Complete Chevrolet Line
f. o. b. Cottage Grove

490 Model Touring Car.....	\$ 993.60
490 Model Roadster.....	967.50
490 Model Coupe.....	1585.60
490 Model Sedan.....	1637.75
490 Model Light Delivery	973.95
FB Model (Baby Grand) Touring Car.....	1597.50
FB Model (Baby Grand) Roadster.....	1561.45
FB Model (Baby Grand) Coupe.....	2383.20
FB Model (Baby Grand) Sedan.....	2383.20
T Model One Ton Truck Chassis.....	1561.25
T Model One Ton Truck with express body.....	1707.10
T Model One Ton Truck express body and top.....	1796.75

Actual Increase in Automobile Costs During Two Years

One of the leading motor publications is authority for the statistics that the average price of all cars has increased but 37% during the two-year period from August, 1918, to August, 1920. In the same period costs of most commodities, including food and clothing, have increased as much as 100%. Thus it would seem unlikely that automobile prices in general will take a huge drop, but more likely a gradual decline along with standard commodities. The following list covering some of the leading makes of cars (compiled from the motor publication referred to) is an indication of the advances in list prices from August, 1918, to August, 1920:

CAR	LIST PRICE INCREASE	PERCENTAGE INCREASE	CAR	LIST PRICE INCREASE	PERCENTAGE INCREASE
Buick 6.....	\$530.00	32%	FORD 4.....	\$200.00	44%
Cadillac 8.....	970.00	33%	Franklin 6.....	745.00	33%
CHEVROLET 4, 135.00	19%		Haynes 6.....	805.00	43%
Cole 8.....	655.00	27%	Maxwell 4.....	330.00	40%
Dodge 4.....	300.00	30%	Oakland 6.....	345.00	33%

We are pleased at the efficient management of the Chevrolet Motor Company whereby it was enabled to hold down the increase in the list price of the Chevrolet car to an advance of only 19%. The Chevrolet Motor Company with its highly efficient factory, and huge output is producing cars at as reasonable a price as present material and labor costs will justify.

Protection of Purchasers Against Drop in Price

In accordance with the broad policy of the Chevrolet Motor Company all purchasers of Chevrolet cars will be fully protected against loss due to decreased prices until May 1, 1921. With this protection you will be safe in purchasing a car now instead of awaiting developments. This is a safe and sane business policy. Instead of cutting prices blindly with a hope that reduced material costs will follow to cover deficit, the Chevrolet Motor Company makes an advance guarantee of refund to present purchasers of whatever reduction may be made prior to May 1, 1921.

Chevrolet cars at present prices represent good honest values. The prices are low compared with other cars of the same class — are economical and reliable. Above all, Chevrolet vehicles are standard goods, readily salable at any time at good values. There are over half a million Chevrolet cars in operation now, which is a pronounced recommendation of the satisfactory service they have rendered in the past.

The SMITH MOTOR CAR COMPANY, or any of its sub-dealers in this territory, cordially invite you to call and see the latest model Chevrolet. We will be glad to talk over your car or truck needs with no obligations to buy. Are you considering the purchase of a car? If so, write, phone or call on us today. A demonstrator is at your service.

Yours for Service

Smith Motor Car Company