

**THE UNIVERSITY OF OREGON**

is maintained by the state in order that the young people of Oregon may receive, without cost, the benefits of a liberal education.

The University includes the College of Literature, Science and the Arts, the Graduate School, the School of Physical Education, and the professional Schools of Law, Medicine (at Portland), Architecture, Commerce, Journalism, Education and Music.

High standards of scholarship are made possible by an able faculty, well equipped laboratories and a library of nearly 100,000 volumes.

Supervised athletics are encouraged and every attention given the health and welfare of the students.

With a heightened confidence gained by the recent expression of public support, the University is now entering upon an era of large development and extended usefulness.

For a catalogue or for any information, address:

**THE REGISTRAR**  
University of Oregon  
Eugene, Oregon

## OREGON NEWS NOTES OF GENERAL INTEREST

Principal Events of the Week Briefly Sketched for Information of Our Readers.

The Oregon Normal school will open its doors for the year's work on September 20.

Three hundred members of the Knights of Pythias held their annual picnic at Woodburn.

The increase in freight rates will cost Hood River apple growers an approximate \$200,000 this year.

The Krieg & Higgons warehouse, located in the railroad yards of Lebanon, was completely destroyed by fire.

During the six months preceding August 1 deaths in Klamath Falls numbered 56. The number of births reported was 52.

Apple box shooks will cost Hood River growers 28 cents a box this season. The price of last year ranged from 15 to 23 cents.

Jabes H. Gwin, of Pendleton, was elected supreme master of arms for the grand lodge, Knights of Pythias, in session at Minneapolis.

Plans are being made at Pendleton to entertain 300 delegates to the annual convention of the State Federation of Labor, September 19.

Under the auspices of the Multnomah county farm bureau, a series of poultry meetings and culling demonstrations will be held this week.

After six weeks of drilling through lava rock, an abundant flow of water has been reached at the Grisez Lumber company's mill in Klamath county.

There are 1491 farms in Linn county and 105,449 acres devoted to agricultural and horticultural crops this year, according to a survey just completed.

Samuel Minchin, who lived on a farm between Dundee and Dayton, was struck by a Southern Pacific electric passenger train and was instantly killed.

A 20 per cent dividend is being received by stockholders in the Cottage Grove Canning company. Gross sales of the company in 1919 amounted to \$50,000.

With the mercury hovering around 94 degrees, Roseburg last week faced an ice famine. The two local plants stated that the ammonia shortage was responsible for the condition.

W. O. Shoup, of Marshfield, about 31 years of age, was killed by the Davis slough logging train when his foot caught in a railroad frog and he was thrown beneath one of the wheels.

H. L. Plumb has been appointed supervisor of the Deschutes National forest to succeed Norman L. Jacobson, who has resigned to accompany the Irvin S. Cobb expedition this fall.

The record for all the 46 years of Augusts which have been tabulated at the weather bureau in Portland was broken Thursday when the temperature climbed to 98 degrees at 3 o'clock.

Melvin Olinger, 13 years old, son of Jasper Olinger of Milton, was accidentally shot and killed by Mansford Brittain, a companion, at Sailing's camp in the Blue mountains, east of Milton.

M. H. Harlow, Lane county commissioner, who has one of the best cherry orchards in the county, said he gathered 54 tons of cherries off his eight acres this season, this being the record crop.

All work on the construction of pier 3 at the port terminals at Astoria was stopped temporarily when the laborers and carpenters, totaling about 125 men, struck, and the other employees were laid off.

Two hundred men employed in construction of the Willamina-Grand Ronde railroad, a ten-mile feeder being built from Willamina into the timber districts west of there, are out on strike for an eight-hour day and more pay.

The Inland Highway association will give a picnic at Manning, in Washington county, August 18. The association is advocating the building of a state highway through Forest Grove, Banks, Manning, Buxton, Vernonia, Mist and Jewel to Astoria.

Approximately 6,000,000 young Chinook salmon are to be released from the Klaskanine river hatchery during the coming few weeks. These young fish, which range in length from three to seven inches, will be turned loose in lots of about 100,000 each.

Following an order from the state examiner of banks closing the doors of the bank of Jacksonville, H. Johnson, the president, was put under arrest by Prosecuting Attorney Roberts and placed in jail charged with perjury in misstating the true condition of the bank to the state bank examiner.

Application to appropriate 25 second feet of water from Wilson creek for municipal power development has been filed with the state engineering department by the city of Bandon. The application is preliminary and does not indicate the proposed financial expenditure or the nature of construction work.



**Don't Neglect Your Eyes**

By correcting a slight error in your vision now you will save yourself from a lot of trouble in years to come.

The purpose behind our service is to be minutely accurate in all that we do for you—to make you a permanently satisfied client—to please you to the extent that you will tell others.

Permit us to explain the advantage of KRYPTOKS, which combine near and far visions in one pair of glasses

**Sherman W. Moody**  
Eyesight Specialist and Optician  
Factory on Premises—Phone 362  
881 Willamette St., Eugene, Oregon

**Don't Neglect Your Eyes**

By correcting a slight error in your vision now you will save yourself from a lot of trouble in years to come.

The purpose behind our service is to be minutely accurate in all that we do for you—to make you a permanently satisfied client—to please you to the extent that you will tell others.

Permit us to explain the advantage of KRYPTOKS, which combine near and far visions in one pair of glasses

**Sherman W. Moody**  
Eyesight Specialist and Optician  
Factory on Premises—Phone 362  
881 Willamette St., Eugene, Oregon



**INVESTIGATE THE WESTERN PIPELESS FURNACE**

I will have one on the floor soon and it is built to burn wood only.

**ALSO SEE THE DURO WATER SYSTEM**

**A. L. WYNNE**  
Plumbing and Supplies  
Electric Work and Supplies  
Opposite Postoffice

**INVESTIGATE THE WESTERN PIPELESS FURNACE**

I will have one on the floor soon and it is built to burn wood only.

**ALSO SEE THE DURO WATER SYSTEM**

**A. L. WYNNE**  
Plumbing and Supplies  
Electric Work and Supplies  
Opposite Postoffice

**GAS AND ACID STOMACH**  
And Other Stomach Troubles Relieved in Two Minutes, by taking a heaping teaspoonful of JOTO in a glass of hot water. Absolutely harmless. Sold by All Druggists.

**CARPENTER OMER MOORE**

STAIR BUILDING AND CABINET MAKING. WILL BUILD ANYTHING.

327 QUINCY AVENUE

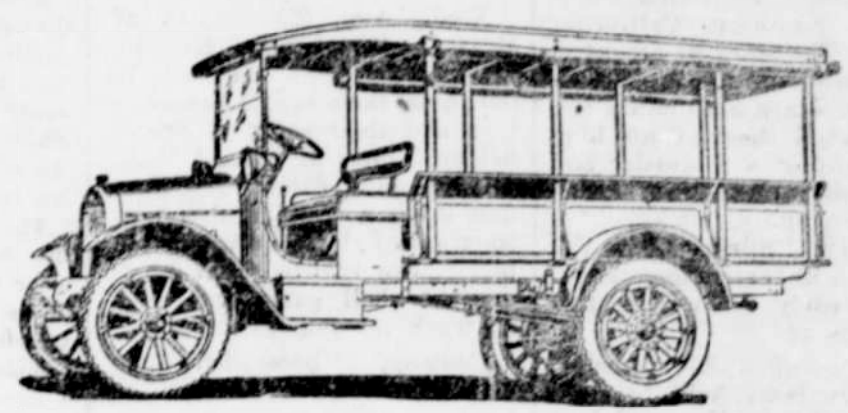
# Types of Chevrolets Soon to Arrive

We will soon receive another car of Chevrolet vehicles, which will include all of the following classes of pleasure and commercial cars.

## Chevrolet One-Ton Truck

Price complete with express body and top, \$1748.50  
Price of chassis only, \$1515.50

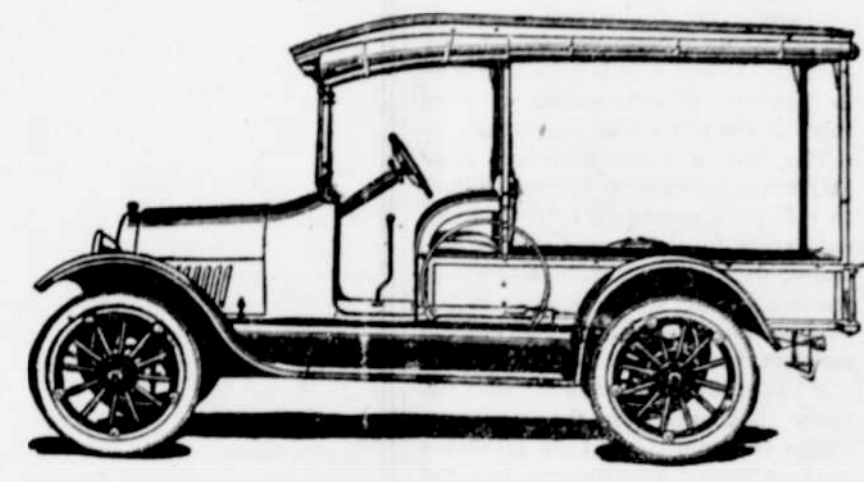
If you are considering a truck, either for general hauling or farm use, come and see this truck when it arrives and study its construction. We can highly recommend it for the hardest kind of service. We not only sell this truck for a one-ton job, but recommend this load for it. However, compare its construction part for part with other trucks of approximately the same size, and you will see how conservative is its rating.



### NOTE THESE HIGH GRADE FEATURES

- 1—Valve-in-the-head, long stroke motor developing 42 actual horse power.
- 2—Unit power plant with clutch totally enclosed.
- 3—Two-piece tubular drive shaft with three universal joints which prevents "whipping."
- 4—Hardened steel worm and large bronze worm gear with a 2 1/2-inch face.

- 5—Main drive axles of Chrome-Vanadium steel running in double rows of New Departure ball bearings.
- 6—Rear springs 2 1/2 inches wide by 54 inches long and 12 leaves.
- \* 7—Monarch governor adjusted for 25 miles per hour speed.



## No. 2 Light Delivery Truck

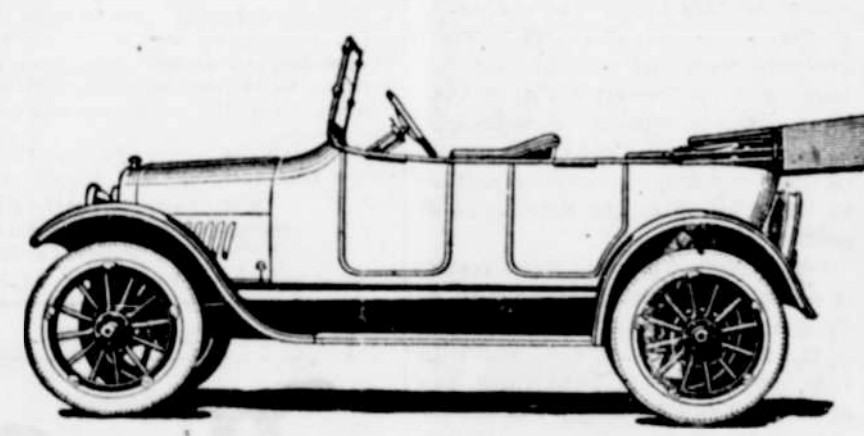
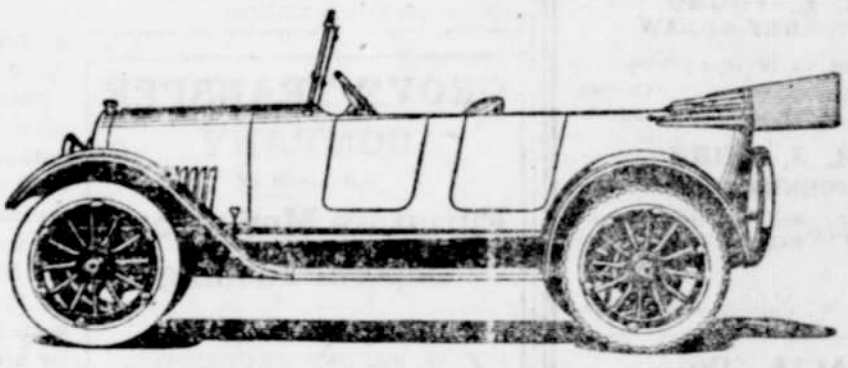
\$945.00

This little truck of one-half ton capacity has a great variety of applications. It is well adapted to the farmer's use supplying the double service of truck and pleasure car. It is fast and well sprung, which permits its use as a pleasure car, but at the same time affording room for the loads which you would now like to haul but can't in the ordinary touring car. For delivery purposes including general merchandise, laundry, milk, etc., this machine cannot be surpassed.

## Model FB Baby Grand Touring Car

\$1552.00

This attractive car of high grade construction has now been well introduced in this territory. We confidently refer you to the owners of these Baby Grand Chevrolets and feel sure that a sale to you will result. Compare its general construction, nobby body design, and equipment with other cars of from two to four hundred dollars higher cost, and you can easily see the car value of the Baby Grand model.



## Model 490 Touring Car

Price, \$963.00

This car needs no introduction. Ask any of the 600,000 owners and almost all will enthusiastically recommend this sturdy car for reliable and economical service. When you buy a car the most important tests of the car's worth are:

- 1—What is its second-hand value after a year or two of use?
- 2—Is the car readily salable, at any time?

Ask any second-hand auto dealer and he will tell you that there is always a good sale for Chevrolets and at a high standard of values. Think this over before you buy that car.

## Model 490 Roadster—Price, \$937.00

For those desiring a small economical car for two passengers the "490" roadster is ideal. It is well balanced, with plenty of leg room and its extremely low operating costs makes it highly desirable for the family of "two" or for the man who drives a great deal in connection with his business.

Watch for our announcement of the arrival of these cars and visit our salesroom to look over this large variety. You will be interested in them. All prices f. o. b. Cottage Grove and subject to change to cover increased freight rates.

—YOURS FOR SERVICE—

# Smith Motor Car Company

### SUMMONS.

In the Circuit Court of the State of Oregon for Lane County.

Ellett N. Hopper, plaintiff, vs. Grace Hopper, defendant.

To Grace Hopper, the Above Named Defendant:

In the name of the State of Oregon you are hereby required to appear and answer the complaint filed against you in the above entitled suit within six weeks from the date of the first publication of this summons, and if you fail to so answer, for want thereof the plaintiff will apply to the court for the relief prayed for in plaintiff's complaint, to-wit: for a decree of the court dissolving the marriage contract and bonds of matrimony existing between you and the plaintiff on the grounds of cruel and inhuman treatment and infidelity of and toward the plaintiff and for the care, custody and

control of all the minor children belonging to you and the plaintiff and for such other and further relief as

**PEARL OIL**  
(KEROSENE)  
**HEAT—COMFORT**



STANDARD OIL COMPANY (CALIFORNIA)  
T. G. SUDELL, SPECIAL AGENT  
STANDARD OIL CO., Cottage Grove

may seem proper in the premises and for costs and disbursements of this suit.

This summons is served by publication by order of the Hon. G. F. Skipworth, judge of the above named court, dated the 6th day of July, A. D. 1920, and the date of the first publication of this summons will be the 9th day of July, 1920, and the last publication thereof will be on the 20th day of August, A. D. 1920.

H. J. SHINN,  
Attorney for Plaintiff.  
Postoffice address, Cottage Grove, Ore.

To mend serim curtains dip a piece of serim in starch and water, being sure the starch is not too thick; then place on the under side of the torn place and iron on the right side. In ironing men's shirts a patch may be applied in the same way.

Do not wash mushrooms; clean them with a brush (and, by the way, use the peelings for a cream of mushroom soup). Always cook mushrooms five minutes before using.

PHONE YOUR NEWS.

**Dick Hickson**

**HARNESS AND SHOE REPAIRING**

**LOGGERS AND WORK GLOVES**

Seventh and Main