

An  
Extraordinary  
Offer  
A GENUINE



PHONOGRAPH  
AND 24 SELECTIONS  
12 85-cent Records

ON YOUR OWN TERMS  
(Within Reason)

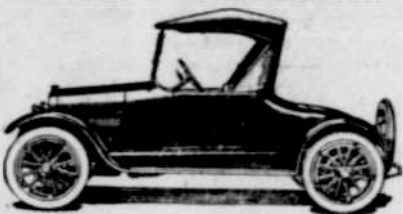
PATHE PHONOGRAPHS  
AND RECORDS  
ARE ACKNOWLEDGED TO  
BE SUPREME BY  
MUSIC LOVERS AND  
TONE EXPERTS

SIX  
EXCLUSIVE ADVANTAGES  
IN A JEWELLED  
PATHE

- 1—No needles to change on a jeweled Pathe. The sapphire ball never wears out.
- 2—Guaranteed longer life of Records
- 3—Plays all makes of records and plays them better.
- 4—Always ready to play as soon as you slip on a record.
- 5—Supreme in tone because of the famous Pathe sapphire ball.
- 6—The Pathe Controlla enables you to increase or decrease the tonal volume at will.

YET THE PATHE COSTS NO MORE THAN THE ORDINARY PHONOGRAPH

H. C. MADSEN  
Cottage Grove Agent



Economical Service  
A MAXWELL FEATURE

It's the kind of a car that meets equally well the demands of business or pleasure, and its moderate cost commands a value in the present market. Come in and let us convince you that the car is all we claim it to be.

Nelson Auto Sales & Service



AUTO ELECTRIC  
AND TIRE SHOP  
PHONE 110-901 MAIN

Dick Hickson

HARNESS AND  
SHOE REPAIRING  
LOGGERS AND WORK  
GLOVES  
Seventh and Main

Omer Moore  
CARPENTER  
& BUILDER

Cabinet and stair work my specialty. Consultation free evenings.  
327 Quincy Av., Cottage Grove

KRYPTOK  
GLASSES  
THE INVISIBLE BIFOCALS

Why Pay Two Fees?

You will find it advantageous to have us perform your entire optical service for you where it can be supervised under one system and for which you are charged one standard fee. Let us explain further.



Sherman W. Moody

Eyesight Specialist and Optician  
Factory on Premises—Phone 362  
881 Willamette St., Eugene, Oregon

Reduced Rates to Portland Imperial Council

The railroads have put into effect a rate of one and one-third of the regular fare for the round trip to Portland on account of the session of the Imperial Council, from points in Oregon, Washington and Idaho—tickets on sale from June 17 to 24. Final limit of return date, June 30.

These tickets will be sold only to members of Temples in the above states or members of their families.

The Recorder will have to furnish each Noble with identification certificates. Consequently, send in application early, if you contemplate going to Portland.

All visiting Ashland at the ceremonial June 5 can secure identification papers then.

Dick Hickson

STATIONERY  
MAGAZINES AND  
LATEST MUSIC  
Seventh and Main

Professional Cards

NURSE MILKS  
323 North Lane St.

Confinement cases a specialty. No contagious cases accepted.

DR. C. E. FROST

Office in Lawson Building.  
Cottage Grove Oregon  
Phone 47

R. McCARGAR, D. D. S.  
DENTIST

Neuralgia relieved instantly by local application. Residence 117 south Third street; office Arcade building, Fifth and Main. Phone: office, 35; res., 136-R

J. E. YOUNG  
ATTORNEY-AT-LAW

Office on Main avenue.  
Cottage Grove Oregon

A. W. KIME, M. D.  
PHYSICIAN AND SURGEON

Office in Phillips building over the White Pharmacy. Office phone 34; residence phone 126J.  
Cottage Grove Oregon

H. J. SHINN  
ATTORNEY-AT-LAW

and notary public. Practices in all courts. Twenty-five years experience.  
Bader Bldg., Cottage Grove, Ore.

ALTA KING  
ATTORNEY-AT-LAW

Collections, Probate, Notary Public  
774 Willamette St., Eugene, Ore.

H. W. TITUS, D. M. D.  
EXPERT DENTISTRY

Modern equipment. First National Bank Bldg. Office hours 9 a. m. to 12 m., 1 to 6 p. m. Evenings or Sundays by appointment.

J. S. MEDLEY  
ATTORNEY-AT-LAW

Eugene Loan and Savings Bank Building  
Eugene Oregon

CHICAGO INVADED BY  
REPUBLICAN HOST

Delegates to National Convention Arriving From All Sections of the Country.

Chicago.—Delegates to the republican national convention from all sections of the country are arriving in Chicago.

Campaign managers for the announced presidential aspirants are perfecting their plans for the actual work in the convention. Wood headquarters has announced that Governor H. J. Allen of Kansas had been elected to make the principal nominating speech for General Wood and it has been announced that George H. Walker of Seattle had been chosen to perform a similar office for Senator Miles Poindexter of Washington.

One of the problems which confront the national committee is the reducing of oversized delegations to a size which will permit of their being seated in the space reserved for delegates.

According to Secretary Miller, a majority of these cases resulted from attempts to harmonize factions in various states, and when the delegations were asked to cut down their membership to conform to the convention call, the same old problems bobbed up again. Undiminished confidence was reflected in the announcements from the Lowden, Wood and Johnson managers. The Hoover headquarters took on added activity with the arrival of a large force of workers from New York.

AMERICA'S WAR DEAD  
IN EUROPE EULOGIZED

Paris.—America's war dead in Europe were eulogized and their graves in all parts of France were decorated, the second Memorial day since the close of the great struggle. American flags floated in the breeze over the resting places of more than 70,000 soldiers and allied organizations joined the Americans in France in services in their memory, while throughout the republic detachments of horizon blue clad police acted as guards of honor at the cemeteries where lie those who fought beside them on the field of battle.

The American Legion, with the army and navy patriotic societies, co-operated with the newly-formed Memorial day committee headed by Ambassador Wallace to decorate the little mounds in 497 burying places scattered along the battle front from the channel to Switzerland and from the Rhine to the Atlantic.

POLES CAPTURE COSSACKS

Soviet Offensive Grows in Violence on 220-Mile Front.

Warsaw.—Russian Bolshevik reinforcements are being brought up everywhere in the offensive against the Poles, which is increasing in violence along the northern sectors of the front, says an official statement issued at headquarters here. Fierce combats are raging from the Dvina river on the north to the Pripiet river on the south, a distance of approximately 220 miles.

Prisoners captured by the Poles west of the Beresina river, the statement says, include 400 Cossacks.

Woman is Assistant Attorney General.

Washington.—President Wilson established a precedent when he nominated Mrs. Annette Abbott Adams of San Francisco to be assistant attorney general. This is the first appointment of a woman to this office and is the highest federal office yet to be given to a woman. Mrs. Adams is now United States attorney for the northern district of California.

X-RAY

AT COTTAGE GROVE HOSPITAL

AN UP-TO-THE-MINUTE MACHINE HAS BEEN INSTALLED FOR EXAMINATION AND TREATMENT OF ANY PART OF THE BODY.

Three-Quarter Length "Susette"  
The new "Susettes" are made with wide roll top and reach just below the knee. We have the new "Susette" socks in black, white, brown; silk hse or silk.  
The pair..... \$1.25 to \$2.50

Umphey & Mackin  
THE QUALITY STORE

HALF SOCKS FOR CHILDREN  
here in half and three-quarter lengths in all sizes from baby up to size 9 for older girls.  
Priced the pair..... 36c to 65c  
Get the Newest in Hosiery Style



Ten Day Sale of  
SKIRTS

FOR THIS WEEK AND NEXT WEEK

ONE-HALF AND ONE-THIRD OFF

Some of these skirts are priced just half of the former regular price. The balance of our separate skirts are priced at one-third off from the regular prices.

These skirts include silk skirts, white wash skirts and wool skirts in a good range of sizes. The styles are all good and most of them new this season.



NEW BLOUSES MORE FASCINATING Than EVER

Georgette and crepe de chene blouses—pretty new types with trimmings of beads, tucks and embroidery in the latest color and style effect. Excellent quality materials, pretty cuffs and collars that are the newest fashion dictates. All sizes..... \$5 to \$16

THE POPULARITY OF THE COTTON BLOUSE IS NOW AT ITS HEIGHT—IN THESE YOU WILL FIND THE REASON

Voiles, organdies, in white, colors, stripes and checks, frilled, embroidered, lace edged, at..... \$2.50  
Fine voile, organdies, batiste, in tailored or "flossy" models, colored sport stripes are nifty, at..... \$3.95  
Dainty tucks, embroidery and lace edgings enhance these organdies, voiles and batistes, at..... \$5.00



These are "hurry-up" sewing days—for the June bride, for the school graduate, for the summer vacation days. Sewing days must now be speeded up to be ready on time. This store is amply prepared for "quick needs" in sewing accessories and materials of every kind. Try us today.

Kimona Silks

in bright array are now being shown in our silk department. You will find the bright, attractive colors and patterns now so much in demand for the summer travel days. These silks are a yard wide and all in short individual patterns.

\$1.25 to \$3.25



The New and Correct Wash Fabrics

AT UMPHEY & MACKIN'S IN ABUNDANCE AND IN A VARIETY THE GREATEST IN COTTAGE GROVE



To Umphey & Mackin's for wash fabrics, for any really desirable wash fabric, and especially for patterns and qualities most agreeable in accord with good taste—also for patterns unusual and for patterns that are not obtainable anywhere else in this state. Wash fabrics are in style, and one notes the reason here—there is so much of beauty in the display that is here, so much to make pleasant the economy that wash fabrics make possible. Following is a partial list of the more notable wash fabrics this store now presents in an exhibition that is the more important because it comes so early, thus allowing for the making of summer garments intended to vie with the flowers and sunshine.

Long Beach Cloth  
Japanese Crepe  
Frenlin Cloth  
Marvel Tissue  
Imported Organdie  
Zephyr Gingham  
Voile Elegante  
Stratford Voile  
Triumph Voile  
Solid-colored Voile

Embroidered Voile  
Poplin  
Gabardine Skirting  
Batiste  
Madras Skirting  
Non-Krush Linen  
Mazol Cloth  
Peter Pan Gingham  
St. Gall Swiss  
Sunbeam Voile

Colored Handkerchief  
Linen  
Voile Avignon  
Toulon Voile  
Plisse Crepe  
Embroidered Organdie  
Pique  
Oxford Suiting  
Linweave  
Sun Ray Silk

Of First Importance  
Whether White or Pink

are the corsets with which we build the foundation on which will rest the sheer, dainty dresses of summer. Poor corsetry tells no more than ever the store of those little bumps, inequalities, angles or hollows which mar the figure lines. To guarantee the proper shaping is a problem you may be able to solve in more than one store. But why run the risk when you know that our corset department is built on the lines of reliability which cause your troubles to cease the moment you have passed over that problem to us?

New models shown in flesh, pink, white.....\$2.50 to \$8.50

