

The Cottage Grove Sentinel

COTTAGE GROVE, LANE COUNTY, OREGON

THURSDAY, JULY 21, 1955

Emerald Empire Roundup, Aug. 5-7 Sees Large Crowd

A heavy advance demand for tickets to the Emerald Empire Roundup, Aug. 5 to 7 in Eugene, has been felt since the announcement that Rusty and Rin-Tin-Tin will be present in person to take part in all major festivities of the weekend.

Eugene Jaycees and police, sponsoring agencies, have announced that other attractions will include a dance Aug. 6 featuring Bob Wills and his band; big parades in downtown Eugene Friday and Saturday afternoons, Aug. 5 and 6; and buckeroo breakfasts at the fairgrounds from 7 to 11 a.m. Saturday and Sunday, Aug. 6 and 7. Aunt Jemimah will be present in person at the breakfasts.

Rodeo performances at the fairgrounds are scheduled for 7:30 p.m. Friday and Saturday, Aug. 5 and 6, and 2 p.m. Sunday, Aug. 7. Slim Pickens, the nation's favorite rodeo clown, will be back this year with new act, Mel Lambert, nationally famous rodeo announcer, will also return.

A limited number of rodeo tickets have been placed on sale at the following places: Medo-land Creamery offices in Eugene and Corvallis; radio station KRNI in Roseburg; radio station KQMS in Coos Bay; and R and H Variety in Springfield.

Roundup headquarters in Eugene will be open at 30 11th Ave. E. July 20. Until that time tickets may be ordered by mail by sending checks to Emerald Empire Roundup, Eugene, Oregon.

Reserved seat tickets are \$2.50. Grandstand tickets entitling the holder to any seat of his choice in the grandstand, are \$2.00. Persons ordering tickets should specify date for which they were wanted, and whether the check is for reserved or grandstand section. General admission tickets, a dollar each, will not be sold in advance.

Carpenter to MC Mary's Peak Trek

CORVALLIS Johnny Carpenter, popular Portland radio announcer, will be master of ceremonies at the 10th annual Shriners' Trek to Mary's Peak on Sunday, August 7. It has been announced by Cecil Blakely of Corvallis, Trek manager.

The trek is staged at Mary's Peak, just 27 miles west of Corvallis on the Philomath-Waldport highway. Events begin at 12 noon. The Trek is a family outing sponsored by the Shrine clubs of Benton, Linn, Polk and Lincoln counties.

All profits go to the Shriners Hospital for Crippled Children in Portland. An average of \$13,800 annually has been turned over to the hospital the past nine years. A slogan of the Trek has been "No man stands so straight as one who stoops to help a crippled child."

A long face often shortens your list of friends.

10th Annual Peak Trek Features Family Picnic

CORVALLIS — A family picnic is one of the main features of the 10th annual Mary's Peak Trek scheduled for Sunday, August 7, in the Siuslaw national forest, according to Cecil Blakely, Trek manager.

Barbecued sandwiches with all the trimmings will be sold at the Trek for 50 cents a serving. Many families bring the remaining food to will in a picnic feed.

Al Oliver of Corvallis is chef for the more than a ton of boneless rounds of beef which are barbecued. About 15 to 20 helpers will join Oliver at Mary's Peak the day and night before the Trek to ready the meat.

The meat is held in place over an open 50-foot pit by wire wrapping and skewers. Two cords of oak wood and 12 to 14 hours of slow "cooking" are required to "bring out the best in the meat," Oliver said.

During the last six hours of firing, a special seasoning concoction "wamped up" by Oliver will be repeatedly mopped on the meat. Professional meat cutters, Shriners and non-Shriners, from the four sponsoring counties—Linn, Lincoln, Polk and Benton—will do the cutting at serving time.

Here's what it takes for the extras: 400 loaves of bread, 120 pounds of coffee, 10 gallons of cream, 50 gallons of pickles and 20 pounds of sugar.

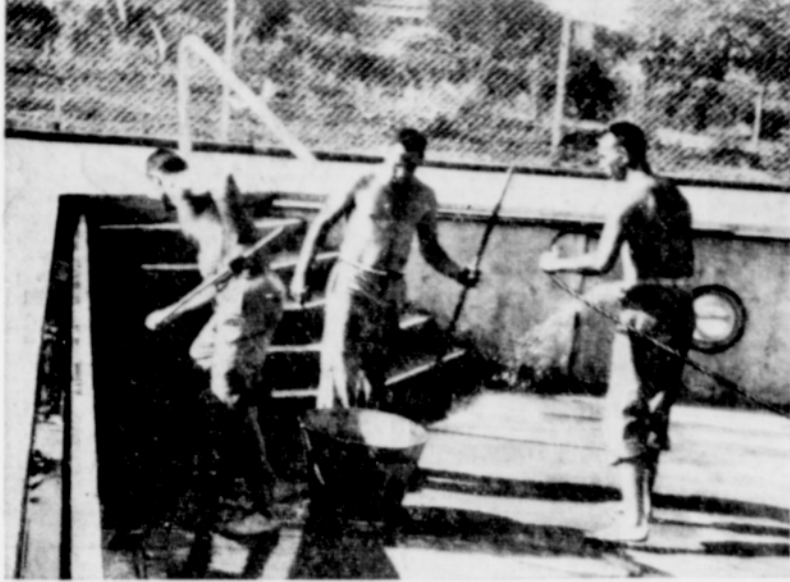
About 50 Rainbow girls from the four sponsoring counties will assist in serving the barbecued sandwiches and trimmings. A 1 1/2 hour free entertainment show follows the noon picnic.

This will be the 10th annual Trek. All Trek profits, an average of \$13,800 annually, go to the Shriners' Hospital for Crippled Children in Portland.

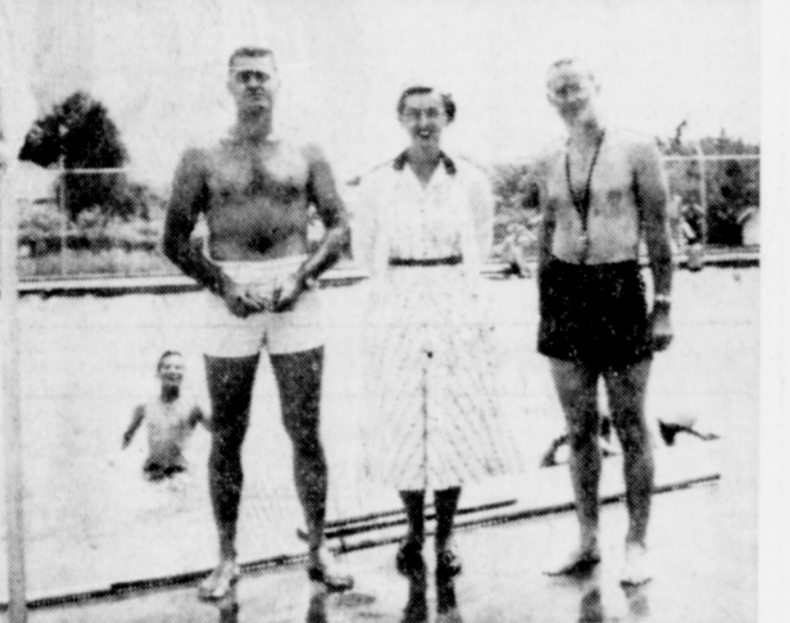
cut down to approximately three weeks, is expected to be further reduced.

Region XIII of SBA covers all of Washington, Oregon, Idaho, Montana and Alaska. The Regional Office is in the 905 Second Avenue Building, Seattle 4, Washington. The Portland Branch Office is located at 520 S. W. Morrison St., its territory includes the state of Oregon and the Columbia River Counties in Washington. Up to May 31st of this year SBA had approved 140 loans totaling \$7,135,000.00 in this region and 1,511 loans totaling \$77,671,000.00 in the United States as a whole. Banks have participated with SBA in making 69% of all loans approved in our region.

Get your copy of the Cottage Grove Leader at your newsstand or the Sentinel office.



A GOOD SCRUBBING IS GIVEN CG'S NEW SWIM POOL before the water is let in. From left to right: Wallace Clochetti, Mel Fox and Ron Pupke are shown proving the elbow grease to last Wednesday's cleanup. Clochetti is the pool manager, while Pupke and Fox will be lifeguards.



SOUTH LANE RECREATION INC. SWIM POOL VIP's are pictured in front of the pool on opening day. From left to right they are: Wallace Clochetti, pool manager; Mrs. Norman Richards, South Lane Recreation president; and Robert L. Dusenberry, recreation director.

HEARING AIDS and BATTERIES

FOR ALL MAKES OF HEARING AIDS Hearing Aid users will be pleased to learn that we now carry a complete line of hearing aid batteries. It is no longer necessary to obtain batteries from "hard to reach" sources. Visit our Hearing Aid department at your first opportunity. See our "AUDIOTONE" Hearing Aids too. WE ARE HAPPY TO OFFER THIS COMPLETE BATTERY SERVICE FOR THE CONVENIENCE OF HEARING AID USERS.

KELLY DRUG CO.
We Give S&H Green Stamps
49-51-53-55-57-59

S B A Field Offices Loans Increased

John G. Barnett, Branch Manager of Small Business Administration announced today that the Agency's Field Offices can now make direct business loans up to \$10,000.00 without obtaining the approval of the Washington, D. C. Office. Some time ago, the authority of Regional Directors was extended to allow them to approve business loans up to \$50,000.00 where a bank participated at least 25% in the total amount of the loan. Mr. Barnett said that both of these actions were taken in an effort to speed service to applicants. Loan processing time, now

If you need money...

a low-cost First National personal loan is as easy as this...

- 1 Go to your nearby First National Branch, and ask to see a loan officer. (You'll find him friendly, helpful.)
- 2 Explain your needs. (You might wish to consolidate debts, pay doctor bills or taxes, or have one of many other reasons to need ready cash.)
- 3 Arrange your own repayment plan. (Small monthly payments will be suited to your particular situation.)
- 4 You will receive cash, or have the loan credited to your account.

It's as simple as that. And remember... First National is open for a loan at any other bank service from 10 to 5, Monday through Saturday.

Cottage Grove Branch
FIRST NATIONAL BANK OF PORTLAND
"LET'S BUILD OREGON TOGETHER"

So They Say



in praise of hubby, when she saw how their TV set worked after he called Ed's.



Ariens Jr. tills 12" wide up to 6" deep — prepares garden without spading, cultivates all season without hoeing! With "Paring Knife" tines it does a better job of tilling than any other low-priced rotary tiller! 2 h.p. engine. All steel construction. Engineered for hard, trouble-free service. See it... try it... and you'll buy it!

S&S EQUIPMENT
1/2 Block N. of RR Depot
117 No. Lane Ph. 110

FLOUR SALE

NATIONAL BRANDS THIS WEEK AT WOLFARD'S -- STOCK UP AND SAVE AT THESE MONEY-SAVING PRICES

GOLD MEDAL
10 LBS. 89c
25 LBS. \$2¹⁵
50 LBS. \$4²⁹

DRIFTED SNOW
10 LBS. 89c
25 LBS. \$2¹⁵
50 LBS. \$4²⁹

BISQUICK CAKE MIX Large Pkg. 39c
Betty Crocker Except Angel Food 4 PKGS. \$1⁰⁰

Farm-Fresh Produce

CUCUMBERS 5c ea.
TOMATOES 19c lb.
ONIONS 3 lbs. 14c
CANTALOUPE 9c lb.
DANDY IN SALADS 5c ea.
DANDY FLAVOR. NOW 19c lb.
NEW CROP MILD-SWEET 3 lbs. 14c
YOU'LL LOVE THESE FINE FLAVORED MELONS 9c lb.

RITZ SNOWFLAKES Crackers, pkg. 29c
2 lbs. 49c

OXYDOL Giant Size 61c PKG.
New Snowdrift
3 lb. can 79c
6 lb. can \$1.57
1 lb. can 35c

NIBLETS With That Fresh Flavor 6 CANS \$1⁰⁰

MEXICORN You'll Like Its Tangy Flavor 6 CANS \$1⁰⁰

Wesson Oil
Quart 59c
1 Gallon \$2.19
Pint 33c

COFFEE Manning's The "Extra Good" Coffee LB. 93c

CAT FOOD Puss n' Boots No. 1 tins 2 FOR 25c

BEG MORE Dog Food No. 1 tins 6 FOR 85c

KELLY'S MARKET QUALITY MEATS

Veal STEAK Shoulder Cuts LB. 49c

Veal Rib CHOPS Or Sirloin Steaks LB. 69c

Ham & Veal LOAF For Loaf or Patties LB. 49c

Pork SAUSAGE Country Style LB. 39c

MEAT CUT FOR YOUR LOCKER

Free City Delivery
WOLFARD'S
YOUR FRIENDLY FOOD STORE
637 MAIN ST. - COTTAGE GROVE - PHONE 53

Use Your Phone. Our Number 53