

Oregon Congress of Parents, Teachers To Stage "Golden Yesterdays" Pageant

"Golden Yesterdays," a pageant depicting some of the Oregon Congress of Parents and Teachers, will be presented at the civic auditorium Tuesday night, April 26, as a highlight of the Golden Jubilee Convention to be held in Portland April 26, 27 and 28. The pageant is the result of much research into old papers and books and many interviews by the Historian Committee headed by Mrs. C. D. Cummins, Portland. Miss Dorothea Lensch, Portland, recreation chairman for the Congress and Director of the Portland Bureau of Parks, will stage the pageant.

The combined Mothersingers Chorus composed of members of individual groups throughout the state will furnish music for the pageant. A reception for Mrs. N. P. Leonard, Providence, R. I., president of the National Congress, Parents and Teachers will follow. Mrs. Leonard will take part in the Oregon convention as one of her last official acts as national president, as she will retire from that office at the National Convention to be held in Chicago in May.

The second day of the convention will be given over largely to consideration of a major problem facing the youth of America today. Speaking on "New Approaches to Juvenile Delinquency" Wednesday morning will be Bertram M. Beck, Director Special Delinquency Project, Children's Bureau, Washington, D. C. A panel discussion will follow with Dr. R. E. Lueallen, Monmouth, as moderator. Dr. Lueallen, Tuition Scholarship chairman for the Oregon Congress, has recently been named Administrator in charge at the Oregon College of Education. Interrogators will be: Herbert Bisno, Eugene, Assistant Professor of Sociology and Social Work at the University of Oregon; Mrs. Victor P. Morris, Eugene, a former faculty member of the Oregon College of Education for ten years; and A. Wayne Durrell, Portland, Dean of Admissions, University of Portland. He also serves as Juvenile Protection chairman for the Oregon Congress of Parents and Teachers. Wednesday afternoon these interrogators will head a section meeting on the community's, the school's, and the home's responsibility for juvenile protection.

Patterson Likes Conservation Days

SALEM, ORE., Governor's Office, (Special)—Governor Paul L. Patterson gave his endorsement to the wise use of the state's natural resources last Thursday, as he proclaimed the period May 1-7 as official "Conservation Week" in Oregon and urged everyone to participate in this important program.

In his proclamation, Governor Patterson said "the intelligent development of our natural resources is of primary importance to the people of the state and our way of life."

"Fortunately, most of our natural resources are renewable," the Governor pointed out, "and minerals may also be wisely used. Today, the tree farms support more wildlife than ever before. With more people coming into the state, we will require more water. More fishermen and hunters will use the state's streams and forests. The agricultural lands will have to meet greater demands."

Scientist's Talks Start UO Campus

UNIVERSITY OF OREGON, Eugene, (Special)—Dr. Robert's great scientists, will be the 1955 Condon Lecturer.

Under the Condon Lectureship of the Oregon State Board of Higher Education, Dr. Oppenheimer will give six lectures in the state. He opened the series on the University of Oregon campus Tuesday, April 19. His first address was "The Subnuclear Zoo; The Constitution of Matter." On Thursday, April 21, he will give his second address at the University on "Elements of Order."

These two talks will be repeated in Corvallis at Oregon State college on April 26 and 28, and in Portland at Portland State college on May 3 and 4.

The lectureship under which Dr. Oppenheimer comes is an annual event originated by the state board in order to bring to laymen the results of scientific research. Eminent scientists are brought to the state each year to talk to the laymen audiences concerning research in their fields of specialization. Among outstanding men who have appeared here under the lectureship include Howell Williams, vulcanologist; Robert J. Braiddwood, archaeologist; and George Gaylord Simpson of the American Museum of Natural History.

Dr. Oppenheimer is director of the Institute for Advanced Study at Princeton, N. J. He has been one of the great figures in the development of the atomic plans and weapons. He was the wartime head of the Los Alamos atomic laboratory.

Thursday morning the delegates will consider "Problems in Education and Their Significance to PTAs" as presented by Paul B. Jacobson, Eugene, Dean of the School of Education, University of Oregon. Dr. Jacobson is former superintendent of schools in Davenport, Iowa, and co-author of numerous educational publications. The final session Thursday afternoon will feature a symposium "The Future of Education as We See It."

From its modest beginning in 1905, the Oregon Congress of Parents and Teachers, then known as the Oregon Congress of Mothers, has made steady growth to its present membership of 118,143, a gain of 8,662 over last year. This includes 50 new units this year, making a total of 646 units in Oregon. In harmony with its objects of child welfare and adult education, the Congress from the beginning has concerned itself with promoting various programs and legislation which would accomplish these ends.

Many Projects Passed One of its earliest projects was the establishment of a Parents Education Bureau, later known as the Well-Baby Clinic, which in 1940 was absorbed by the Visiting Nurse Association. The Congress worked for the passage of the kindergarten bill; the hot lunch program which was the forerunner of the school cafeterias; free textbooks in the elementary schools; the anti-fireworks bill; minimum teachers' salaries; child labor amendment, and the Basic School Support Fund, to name but a few.

Since 1946 the Oregon Congress has received national recognition for its project of providing Tuition Scholarships to high school graduates who wish to major in elementary teacher training in an Oregon college. 46 such scholarships have just been awarded for next year, according to Dr. R. E. Lueallen, Monmouth, chairman, and 92 renewals granted. Contributions to the fund, made voluntarily by local PTAs and individual members, amounted to \$17,363.45 this year, an increase of over \$2,000 over last year.

Since 1946 the Oregon Congress has received national recognition for its project of providing Tuition Scholarships to high school graduates who wish to major in elementary teacher training in an Oregon college. 46 such scholarships have just been awarded for next year, according to Dr. R. E. Lueallen, Monmouth, chairman, and 92 renewals granted. Contributions to the fund, made voluntarily by local PTAs and individual members, amounted to \$17,363.45 this year, an increase of over \$2,000 over last year.

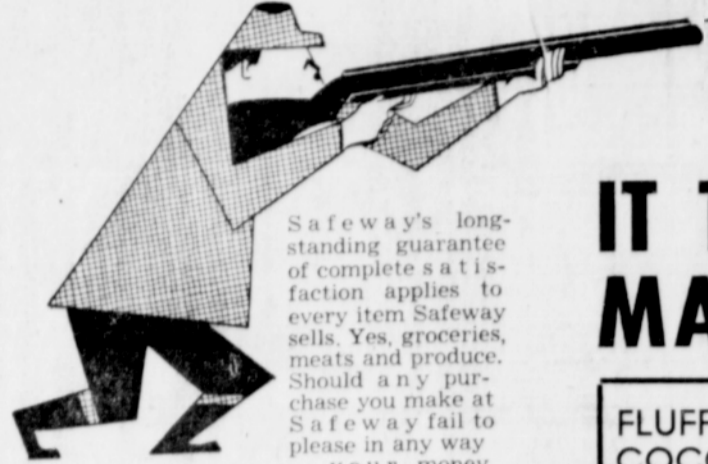
Since 1946 the Oregon Congress has received national recognition for its project of providing Tuition Scholarships to high school graduates who wish to major in elementary teacher training in an Oregon college. 46 such scholarships have just been awarded for next year, according to Dr. R. E. Lueallen, Monmouth, chairman, and 92 renewals granted. Contributions to the fund, made voluntarily by local PTAs and individual members, amounted to \$17,363.45 this year, an increase of over \$2,000 over last year.

Since 1946 the Oregon Congress has received national recognition for its project of providing Tuition Scholarships to high school graduates who wish to major in elementary teacher training in an Oregon college. 46 such scholarships have just been awarded for next year, according to Dr. R. E. Lueallen, Monmouth, chairman, and 92 renewals granted. Contributions to the fund, made voluntarily by local PTAs and individual members, amounted to \$17,363.45 this year, an increase of over \$2,000 over last year.

Since 1946 the Oregon Congress has received national recognition for its project of providing Tuition Scholarships to high school graduates who wish to major in elementary teacher training in an Oregon college. 46 such scholarships have just been awarded for next year, according to Dr. R. E. Lueallen, Monmouth, chairman, and 92 renewals granted. Contributions to the fund, made voluntarily by local PTAs and individual members, amounted to \$17,363.45 this year, an increase of over \$2,000 over last year.

Since 1946 the Oregon Congress has received national recognition for its project of providing Tuition Scholarships to high school graduates who wish to major in elementary teacher training in an Oregon college. 46 such scholarships have just been awarded for next year, according to Dr. R. E. Lueallen, Monmouth, chairman, and 92 renewals granted. Contributions to the fund, made voluntarily by local PTAs and individual members, amounted to \$17,363.45 this year, an increase of over \$2,000 over last year.

SAFEMAY BLASTS HIGH FOOD PRICES with BOTH BARRELS



Safeway's long-standing guarantee of complete satisfaction applies to every item Safeway sells. Yes, groceries, meats and produce. Should any purchase you make at Safeway fail to please in any way... your money back!

IT TAKES BOTH TO BRING YOU MAXIMUM FOOD SAVINGS!

FLUFF-I-EST — TOASTED COCOANUT MARSHMALLOWS

Flavor and Freshness Sealed in 1-Lb. Bag **29¢**

DRASTICALLY REDUCED **BONUS VALUES** OUTSTANDING VALUES YOU'LL FIND IN THIS ADVERTISEMENT

And WHAT'S EVEN MORE IMPORTANT **Low Prices on All Other Items** Day After Day—Week in and Week Out

CANE SUGAR

Victorias Brand, Pure Cane

10 lb. Bag **93¢**

- Fancy Grapefruit No. 303 Can **2 FOR 29¢**
- Apple Juice Westfair Brand, Tasty Delicious and Refreshing 32-oz. Bot. **19¢**
- Bisquick biscuit mix 40-oz. pkg. **29¢**
- Fleet Mix biscuit mix 40-oz. pkg. **25¢**
- Pears Highway No. 2 1/2 can **25¢**

- Table Syrup Sleepy Hollow Brand 12 oz. Real Maple Flavor **25¢**
- Salad Dressing Finest Quality Duchess Brand Qt. Jar **45¢**
- Nip'n Tuck Cat Food 6 15 1/2 -oz. Cans **69¢**
- Pineapple Juice LaLani 46-oz. can **23¢**
- Margarine Coldbrook 1-lb. carton **6 FOR 98¢**

STORE HOURS 9 A.M. TO 9 P.M. DAILY

Safeway Salutes Oregon Products

- Paper Napkins Zee, white pkg. of 80 **10¢**
- Facial Tissue Zee family pack 400 pkg. **20¢**
- Silk Tissue for bathroom roll **6¢**
- Waxed Paper Zee brand 125-ft. roll **23¢**
- Brooms Brown Beauty each **\$1.89**
- Borene Soap for laundry 24-oz. pkg. **30¢**
- Nu Bora gran. soap 46-oz. pkg. **63¢**
- Fril-lets Porter's wide noodle 1-lb. pkg. **33¢**
- Popped Wheat Nu Vita 6-oz. pk **14¢**
- Hood River Pears No. 2 1/2 can **39¢**
- White Satin Sugar 5 lbs. **52¢**
- White Satin Sugar 10-lbs. **95¢**
- Dog Food Playfair can **3/25¢**
- Canned Milk Borden's tall can **4/49¢**
- Newton Apples Hood River, for pies No. 2's **27¢**
- Strawberries Oregon 11-oz. can **22¢**

- Liquid Starch Fauntleroy qt **11¢**
- Ivory Soap large bar **2/25¢**
- Kraft Dinner Macaroni 8-oz. pkg. **2/29¢**
- Sugar Pops Kellogg's 8-oz. pkg. **2/45¢**
- Frosted Flakes Kellogg's 10-oz. pkg. **2/45¢**
- Friskies Cubes dog food 5-lb. sk. **69¢**
- Friskies Meal dog food 5-lb. sk. **69¢**
- Apricot Halves Highway No. 2 1/2 can **25¢**
- Cling Peaches Dole No. 2 1/2 can **29¢**
- Pineapple Juice 46-oz. can **2/49¢**
- Tomato Juice Taste Tells 46-oz. can **4/98¢**
- Lunch Meat Oscar Mayer 12-oz. can **29¢**
- Tuna Fish Torpedo, grated No. 1/2 can **19¢**
- Tuna Fish White Star No. 1/2 can **33¢**
- Crackers Tea Timer 1-lb. pkg. **29¢**

- Strawberries Bel-air frozen 10-o. pk. **5/98¢**
- Royal Satin Shortening 3-lb. can **77¢**
- Royal Satin Shortening 6-lb. can **\$1.54**
- Crisco Shortening 3-lb. can **85¢**
- Spry Shortening 3-lb. can **85¢**
- Mayday Oil neutral flavor qt. bottle **59¢**
- Mayonnaise Nu Made qt. jar **59¢**
- Best Foods Mayonnaise qt. jar **59¢**
- Catsup Taste Tells 14-oz. bot. **2/25¢**
- Heinz Ketchup flavor 14-oz. bot. **19¢**
- Karo Syrup Red Label 1 1/2-lb. bot. **25¢**
- Karo Syrup Blue Label 1 1/2-lb. bot. **24¢**
- Fresh Butter Shady Lane per pound **67¢**
- "AA" Large Eggs fresh dozen **61¢**

- Crackerjacks prize in every pkg. 2/15¢
- Canned Milk Carnation Pet tall can **4/49¢**
- Canned Milk Special Morning, Borden tall can **4/49¢**
- Cherub Milk Evaporated tall can **4/45¢**
- Tomato Soup Campbell can **3/29¢**
- Nob Hill Coffee lb. bag 88¢ 2-lb. bag **\$1.75**
- Airway Coffee lb. cn 93¢ 2-lb. can **\$1.71**
- Edwards Coffee 2-lb. can **\$1.85**
- Instant Coffee Edwards 4-oz. jar **99¢**
- Camay Soap for lovely complexion reg. bar **3/27¢**
- Cheer detergent 21-oz. pkg. **30¢**
- Cheer detergent 51-oz. pkg. **69¢**
- Vel Detergent for fine fabrics 37 1/2 oz. **69¢**
- Fab Detergent easy on hands 47-oz. **69¢**

FLICKETTES

Ghirardelli Choc. Candy pkg. **19¢**

LUCERNE MILK

3.8% Regular or Homogenized Qt. ctn. **2/43¢**

FRESH BREAD

Mrs. Wright's White or Wheat Large Loaf **26¢**

FRESH SPRING ASPARAGUS

Crisp, fresh No. 1 asparagus. Carefully selected by Safeway's expert produce buyers. Add it to your menu tonight for extra flavor and color.

2 lbs. 33¢

| | |
|--|--|
| Fresh Radishes or Green Onions 3 bu. 10¢ | Juicy Florida Oranges Your Best Citrus Buy 1b. 9¢ |
| Calavos Ripe Avocados Blends with Any Salad 2/25¢ | Sweet Crisp Carrots 20-oz. Cello Bag 2/29¢ |
| Crisp Fresh Lettuce Compact Heads 1b. 19¢ | Vine-Ripened, Highly Flavored Cantaloupe 1b. 19¢ |
| Field Fresh Rhubarb Invigorating Flavor 1b. 15¢ | Snowy White Cauliflower Compact Heads 1b. 17¢ |

CHUCK ROAST

Fine eating U.S. Choice Pot Roast. Scientifically aged to bring out its peak tenderness and flavor. Carefully trimmed of excess waste and fat to give you full meat value for your money. We guarantee you will be completely satisfied or your purchase price will be refunded.

lbs. 39¢

GRADE BEEF USDA CHOICE

| | | |
|---|--|--|
| Smoked Picnics 4 to 6 lb. Ave. Cello Wrapped 37¢ | Ground Beef 100% Pure Lean Beef 39¢ | Frozen Fryers 2-2 1/2-lb. Ave. Country Squire Pan-ready 59¢ |
|---|--|--|

Beef Pot Roast USDA choice a-c **49¢**
 Round Steak USDA Choice Gde. **79¢**
 T-Bone Steak USDA Choice **95¢**
 Top Sirloin, choice boneless stk. **99¢**
 Corned Beef, Boneless Brisket **49¢**
 Boiling Beef, Choice Plate cut **15¢**
 Beef Stew, Choice Boneless cube **69¢**
 Sliced Bacon, Gold Coin brand **45¢**

Slab Bacon, 8-10-lb. average **45¢**
 Pork Roast, Loin Rib End **45¢**
 Pork Roast, Loin End Cut **49¢**
 Pork Chops, Center Cut **79¢**
 Pork Loin, 8 to 10 lb. average **75¢**
 Sirloin Steak, choice boneless tip **99¢**
 Chinook Salmon, by the slice **15¢**
 Chinook Salmon, by the piece **49¢**

Grocery prices in this ad are in effect now. Meat and produce prices effective through

Sunday, April 24, at Safeway in Cottage Grove. We reserve the right to limit quantities. We will not sell to dealers or their representatives.

LOW PRICES ON EVERYTHING, EVERY DAY AT SAFEMAY

INSURANCE

How Safe Are You?

Against Fire

With prices rising rapidly are you sure your policy is sufficient to cover the cost of replacement of your property? See us for facts and figures.

IT CAN HAPPEN TO YOU

BONDS & HALL-LISTON INSURANCE