

The Cottage Grove Sentinel

COTTAGE GROVE, LANE COUNTY, OREGON

THURSDAY, JANUARY 13, 1955

NUMBER 22

Oregon's Manufacturers Will Report Early January in Industry Census

High Bank Deposit; Loan Record Told By 1st National

A new all-time bank deposit and loan record was reported today by the statewide First National Bank of Portland, underscoring other year-end business indexes that have pointed to a generally favorable economic outlook for Oregon.

Year-end statement of condition figures for the Cottage Grove branch of First National show that on December 31, 1954, deposits at the branch were \$10,106,619 and loans were \$2,012,031, according to branch manager and vice president H. E. Eakin.

According to bank president C. B. Stephenson, deposits for the 69 statewide banking offices were \$784,731,426, loans were \$368,245,083 and resources were \$860,374,437, as of December 31.

Total deposits have increased \$195,683,993 over the same date one year ago, loans are up \$67,222,728, and resources have increased \$214,214,410.

Since the December 31, 1953 statement of condition, the First National organization has increased by 20 banking offices. This includes 18 former affiliated banking offices which became branches on February 8, the First State Bank of Waldport which was acquired on July 26, and the Halsey Street branch which was established in September.

ELECTION OF OFFICERS

Election of officers will be on the agenda at the annual meeting of the Saginaw-Walker Community Club to be held January 25 at the Walker school house. The meeting will be at 7:30 p.m.

Early in January, report forms of the 1954 Census of Manufactures are being mailed to all Oregon manufacturers by the Bureau of the Census, Department of Commerce. The information requested of manufacturing firms in this canvass will enable the Census Bureau to modernize the detailed manufactures statistics, of the vintage of 1947, for States and smaller areas.

An estimated 275,000 manufacturing establishments throughout the United States will receive the forms of the 1954 census. At the time of the 1947 census, a total of 240,881 factories in the Nation reported value added by manufacture of \$74.4 billion, an average of 14,294,304 employees in 1947, and salaries and wages of these employees totaling \$39.7 billion.

The 1947 census showed 3,075 manufacturing establishments in Oregon with value added by manufacture of \$675 million, an average of 105,591 employees for the year, and salaries and wages of \$317.8 million.

The top ranking manufacturing industries in Oregon according to value added by manufacture, at the time of the 1947 census, were:

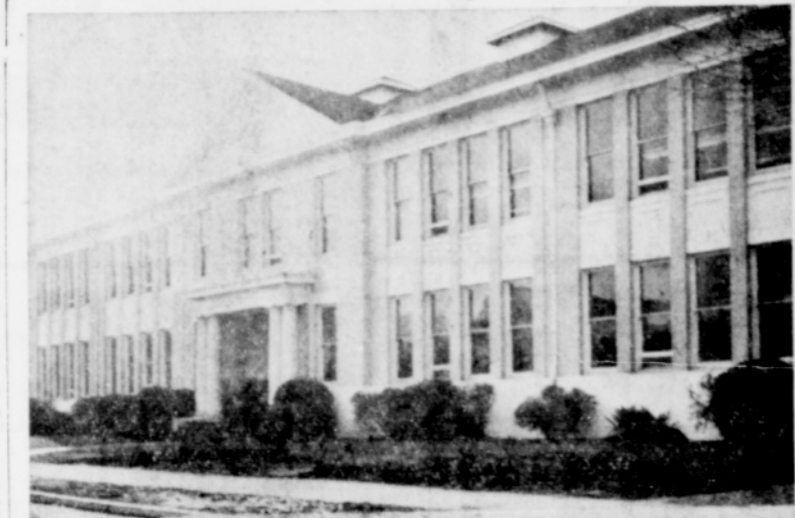
Sawmills and planing mills, general	\$300,513,000
Plywood plants	31,091,000
Canning and preserving except fish	20,592,000
Pulp mills	16,585,000
Newspapers	15,685,000
Milkwork plants	
Bread and other bakery products	
Flour and meal	11,674,000
Paper and board mills	11,216,000
Shipbuilding and repairing	

The Census Bureau is prohibited by law from publishing figures which might disclose information about individual companies.

Sentinel Big Pound Pads, 15c Over 100 Sheets 8 1/2 x 11 Inches



THIS STRAIGHT ON VIEW is Jefferson School one year BC (Before Chopping) trees. The three trees in front of the school were not only blotting out the light from the classrooms, but made it impossible to grow a lawn underneath, their rotten limbs were a hazard and had to be constantly topped. The trees were taken out, leaving the picture below.



HERE IS JEFFERSON SCHOOL one week AD (After Digging) trees. Superintendent Fasold stated that their absence improved the looks of the school 1,000 percent.

D. V. Neighbors Club to Hold 1st Meeting Jan. 20

By Mrs. Roy L. Stone Phone 1114R5

DELIGHT VALLEY—The Delight Valley Neighbors club will hold its first meeting for this year at the Walker hall on Thursday, January 20, with Mrs. William Norris as hostess. The meeting will start promptly at 10:30. Roll call response will be "What I hope to see our club accomplish this year" and annual dues are payable at the time you answer roll call. The project for the day is tying a quilt and members are asked to bring scissors, thimbles and large needles.

Mrs. E. G. Sherrill was confined to the hospital for several days. Mrs. Viola Stone of Indio, California, who has been visiting at the Roy Stone home, has gone to Finn Rock to visit the Glenn Lund family. Mrs. Ida Jackson returned on Saturday from southern California.

Nothing Sacred

WHITE SANDS PROVING GROUND, N. M.—Dior has company.

He gave out with the first bit of agonizing news. Now there's more, girls—this time from the Army's missile test site at White Sands.

New security badges at this installation will carry more than the normal photograph, name and clearance. Right out in plain sight will be:

Your age.
Your weight.
And before toying with the idea of employing the "age stops at 30" technique, they were warned to "check with your lawyers; they'll tell you all about false statements on federal documents," where she had spent the holidays with relatives.

Bucky Stone, who has been a guest at the Roy Stone home, left for Redding, Calif., on Sunday.

Eddie Stone has been transferred to Portland for several weeks. Mr. and Mrs. Robert Long are the proud parents of a daughter, Susan Marie, who arrived on January 3.

BUCK-A-ROO BARGAINS

DOLLAR DAYS ROUND-UP

Fruits & Vegetables

U. S. No. 2
POTATOES
10 lbs. **39c**

Oregon
CABBAGE
Solid Crisp
5c lb.

30 Size
CALAVOS
2 for **25c**

Fresh New
RHUBARB
22-oz. cello pkg.
29c

Yipee and Wahoo! Just look at the herd of buck-a-roo bargains we've corralled for **DOLLAR DAYS!** These are fine quality foods—foods that are home on the range in your kitchen every day of the year. Yes indeed—your dollars buy more . . . much more . . . at **WOLFARD'S** when you lasso the super-savings in every department of our market. So give yourself a free rein at our **DOLLAR DAYS ROUND-UP** and fill the old chuck wagon with buck-a-roo bargains.

NESTLE'S TALL CANS
MILK
9 cans **\$1.00**

SUNPAKT FANCY WHOLE
OYSTERS
3 8-oz. tins **\$1.00**

CLOVERLEAF CHUNK STYLE
TUNA
4 No. 1/2 tins **\$1.00**

H-D BRAND TOMATO
JUICE
5 46-oz. tins **\$1.00**

PLEASE OR SKIPPY
DOG FOOD 12 cans **\$1.00**

CHILI
Swift's With Beans
4 cans **\$1.00**

OLEO
Holiday Brand
5 **\$1.00**

DO YOU KNOW? by Art Cooper

-THAT NOAH'S ARK WAS ONLY HALF THE LENGTH OF THE STEAMSHIP LEVIATHAN?

HALF RIGHT won't do when it comes to anything sold (or done) by ARC ELECTRIC! We have a reputation to maintain and will go to any "LENGTH" to do so, for this reason, we are known as a worthy concern with which to do business.

ALL WORK GUARANTEED BY LICENSED ELECTRICIANS

ARC ELECTRIC & REFRIGERATION
Contracting Sales-Maintenance-Service
113 N. 7th Phone 878

LONGER WEAR - INCREASED SAFETY with the NEW ATLAS

20%

Trade-in allowance on your old tires when you buy NEW GUARANTEED ATLAS TIRES.

Light Truck and Passenger Car Tires Only

Green's Hardware & Supply
Easy Parking Ph. 222
Serving Creswell and South Lane County for over 15 years.

Nolt's Chevron Station
610 Madison Phone 25

TOO MANY DOLLS

We don't want to hold them over.

Values to \$16.95

Take your pick at only **\$5.00**

Need Space?

Add a Room Now

Nothing Down — 3 Years to Pay

Personal Service — Easy Parking

Green's Hardware & Supply
Easy Parking Ph. 222
Serving Creswell and South Lane County for over 15 years.

-Kelly's Market-
Phone 53
Free Delivery Tues. and Fri. Open Fri. Nite till 9:00

—OUR PLEDGE TO YOU—
Top Quality Meats — The Best of Service
Guaranteed Satisfaction

STEWING BEEF
Boneless Very Lean **49c lb.**

SMOKED PICNICS
—Nebergalls— 4 to 6 lb. average **39c lb.**
—AN EXCELLENT BUY—
Sliced at no Extra Charge

DRESSED HOGS
50 to 60 lbs. average per half
Top Quality — Not Wasty
32 1/2c lb.
—HALF OR WHOLE—
We'll have the hams and bacon cured for you.

SLICED BACON
Armour's Banner **49c lb.**

PORK SAUSAGE
The Good Kind **39c lb.**

You'll Like Our Way

CRAB MEAT Bumble Bee can 49c
SALMON Bon Fire Tall Can 39c
SHRIMP Nola Brand 3 cans \$1.00
JEWEL Shortening 3 pound tin 79c
JEWEL Salad Oil Quart jar 59c
CATSUP Stockton 2 bottles 25c
PANCAKE Aunt Jemima 3 1/2 lbs. 39c
FLOUR Fisher's Blend 10 pounds 89c
BISKIT MIX Fisher's 3 pkgs. \$1.00

Rancher's Pride No. 2 1/2 tin for frying **79c**

Chicken

New controlled suds detergent prescribed for automatic washers
With \$1.00 Coupon in Each Box 10 lbs. **\$2.49**

LOOK, LADIES!
this lovely **PLASTIC APRON**

★ Regular 29¢ Retail Value
★ Choice of Patterns
★ Heavy Gauge
★ Lovely Ruffle Border
★ Ideal Gifts for Parties

only **15¢**

WOLFARD'S
YOUR FRIENDLY FOOD STORE
637 MAIN ST. - COTTAGE GROVE - PHONE 53

Buy At Your Home Owned Store