

H. S. Carnival Set for 14th

Cottage Grove Sentinel

COTTAGE GROVE, LANE COUNTY, OREGON THURSDAY, NOVEMBER 13, 1952 NUMBER 13

Alfred Stockdale Enlists in Army November 4th



Alfred Stockdale, son of Mr. and Mrs. Earl H. Stockdale of Martin Creek road, Cottage Grove, enlisted in the army November 4 for three years. He is a graduate of Unioq high school.

J. Lemert Attends National FFA Confab

Jerry Lemert, senior, recently attended the national FFA convention held in Kansas City. He was one of two band delegates from Oregon. While attending a state FFA convention in Corvallis a year ago, Jerry became interested in making an application for the recent trip and playing in the band made up of two delegates from every state in the U. S. In addition to practice sessions, marching and performing on the convention program, Jerry had time to attend business sessions of the convention. Highlights of the week's program included a pageant sponsored by the Firestone Company, a Coronation Ball, a Saddle and Siroin Bar-B-Q, and three-mile-long parade in which the band performed.

Norman Chezem Graduated 23rd US Naval School



Naval Aviation Cadet Norman B. Chezem, 21, son of Mr. and Mrs. L. A. Chezem of 849 North Lane street, Cottage Grove, graduated October 23 from the U. S. Naval school, Pre-Flight, Pensacola, Fla. In addition to a thorough physical training program, the 15 week pre-flight course which Chezem completed includes aeronautical and naval subjects aimed at preparing officer candidates for flight training and eventual commissioning as naval officers. Naval Cadet Chezem graduated from Marshfield high school in May, 1948. He entered the naval service in June 1948 prior to being selected for pre-flight training thru the naval air station, Norfolk, Virginia in June 1952. He is now assigned to the U. S. Naval Auxiliary Air station, Whiting Field, Milton, Fla., where he is engaged in primary flight training. Upon completion of his training at Pensacola and Corpus Christi, Texas, he will be awarded the gold wings of a naval aviator and assigned to duty with the fleet.

Carnival royalty will march down the auditorium aisle at 7:30 p.m., Friday, November 14, to open the annual high school affair. Elected candidates for king and queen are Billie Culvey and Jim Childers, freshmen; Gail Forrester and Rodger Gamble, sophomores; Jerrie Culvey and Manuel Moore, juniors; and Mary Lou Wiese and Jerry Lemert, seniors.

Special bonuses will be given on certain days to the class candidates having the highest number of votes sold since the previous count. The bonus schedule is as follows:

- Friday, November 7 — 500 votes.
- Monday, November 10—1000 (over the week-end).
- Wednesday, November 12 — 1000 (over the holiday).
- Thursday, November 13 — 500.
- Friday, November 14 — 1500 (last day).

All ticket stubs must be in the ballot boxes by 8:45 a.m., Friday or they will not be counted. Home-rooms will be the last 30 minutes of first period when all remaining money and unsold tickets must be turned in and the books balanced. Each class will be penalized as many votes as unsold tickets not turned in at that time or the money that is not turned in for sold tickets.

Booths were assembled by Mr. Wenner's classes Wednesday, November 12. All decorating will be done only by the P. E. classes. They will be undecorated Monday November 17, by the girls' gym class and taken down and put away by Mr. Wenner's classes. Teachers were to decorate the auditorium stage Monday, Wednesday and Thursday evenings under Mr. Sellers' supervision. Teachers will go over the game rules so students will be familiar with work in their booth. Teachers will also go over the work schedules so the students will know their responsibilities. No one will be allowed to leave any class or study hall to assist with the Carnival.

School buses running for the Carnival in the evening will leave the school at 10:30 p.m. The Carnival closes at 11:00 p.m.

Ushers for the Friday night program are: Dixie Wicks, Connie Chase, Bonnie Long, Lucile Kavitz, Sherry Fowler, Alice Lamb, Carol Ann Rieden, Dorla Holgate, Lavona Overholser, Nancy Aubrey, Alice Knaedler and Patty Omyer.—Lions Roar

NINE OREGON LUMBERMEN ATTEND NATIONAL MEETING

WASHINGTON, D. C.—Nine of Oregon's leading lumbermen are attending the 1952 annual meeting of the National Lumber Manufacturers Association in Washington, D. C., November 11-15. They are Hillman Luettmann, E. B. Tanner and Truman Collins of Portland; R. R. Macratney of Klamath Falls; A. J. Glassow of Bend; J. F. Coleman of Kinzua; A. J. Stange of La Grande; George Flanagan of Medford; and Judd Greenman of Verponia.

Tip to motorist: A minute for safety is much better than month for repairs.

UNITS TO RECEIVE AIR FORCE BOOKLET

A 32-page booklet, "You and the Air Force Reserve," will be distributed shortly in quantity to units of the Fourth Air Force as well as by direct mail to inactive reservists in the Northwest. This booklet contains information on the reserve and the status of the reservist, including: Locations of reserve units, districts, and numbered Air Force headquarters; the ready and standby reserve; assignment and retention in the reserve; unit and individual training; the inventory of reserve personnel resources; privileges available to reservists; qualifications for retirement; retirement benefits and pay tables, and answers to questions most frequently asked by reservists.

SIMPLIFIED BOOKKEEPING TAX RECORD BOOKS
For All Types of Business
EASY TO KEEP—LOOSE-LEAF BOOKS
Prices \$2.50 • \$3.25 • \$5.25 • \$8.50
Household & Personal Budget Books 75c, \$1.25

Cottage Grove Sentinel Ph. 555

Lowest Price in 5 years!

FAMOUS COLE STEEL FILES
No. 1204
\$47.95
FOB Factory



A full-depth, solidly-built, heavy steel file. Four smooth-gliding, letter-size drawers on ball-bearing rollers. Equipped with spring-compressors and guide rods, for record protection. Size 52 1/2" high, 14 1/4" wide, 26 1/2" deep. Olive green or Cole arav baked enamel finish.

[Same as above but with legal size instead of letter drawers, No. 1524 \$57.95]

Cottage Grove Sentinel Phone 555-556

Plain-dealing is a jewel. —William Wycherly

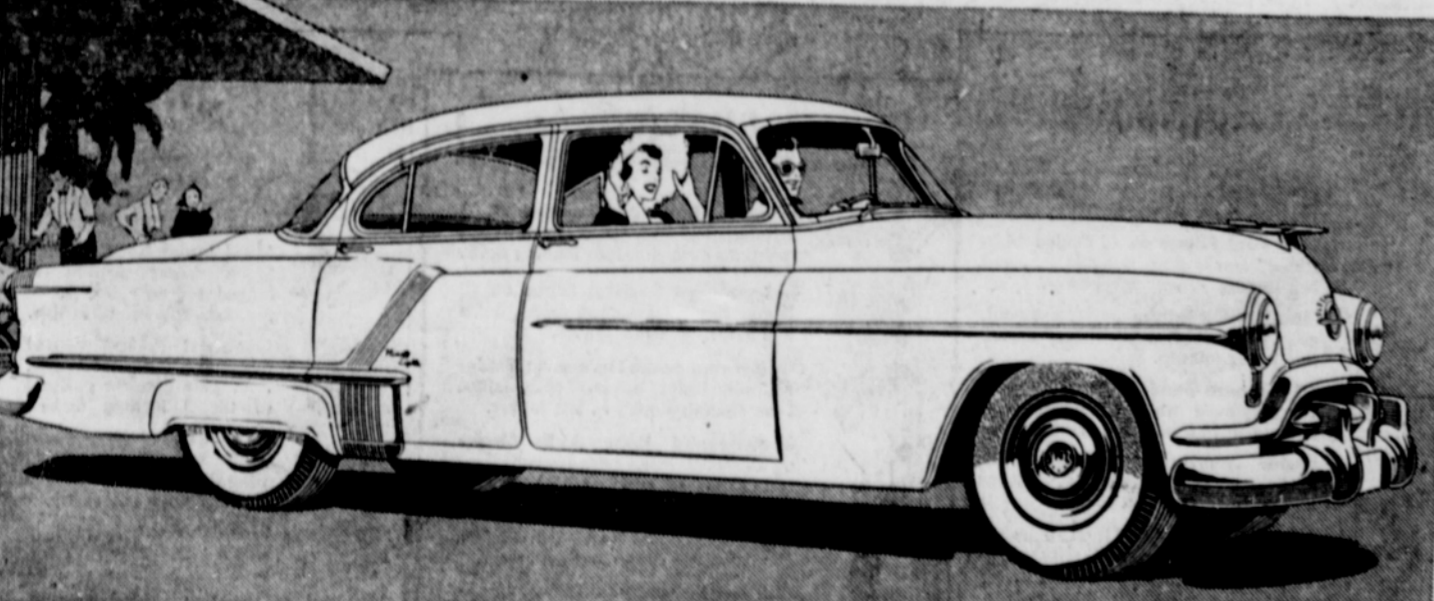
AUTOMOBILE BUYER SAVES \$164 THROUGH STATE FARM PLAN

"I compared finance and insurance costs BEFORE I bought my new car. Through the State Farm Bank Plan my agent saved me \$164.00 over the first rates I'd been quoted." (One of many actual cases.)

The Bank Plan offers you two proven money-saving methods for car buying: Low-cost financing through a nearby bank and low-cost preferred-risk insurance rates. Get your own figures on the car you want and COMPARE them with Bank Plan costs FIRST! Call or see your State Farm agent BEFORE you buy.

BOB BAUDER
709 Main Phone 100
THE STATE FARM MUTUAL AUTOMOBILE INSURANCE CO. • Bloomington, Illinois

THE CLIMAX OF THE "CLASSIC IDEA!"



Ninety-Eight
OLDSMOBILE
WITH FAMOUS "ROCKET" ENGINE

Once in a great while a motor car is produced that stands far above the others of its time. Such a car, we believe, is Oldsmobile's Classic Ninety-Eight. That graceful sweep of line, that balance of chrome and contour—true classic styling. Inside—cushions, color and fabric achieve classic luxury. For classic performance, try the mighty 160-horsepower "Rocket" Engine, teamed with Hydra-Matic Super Drive.* Try Power Steering* for incredibly easy parking, maneuvering. Try all the wonderful Oldsmobile features in the Ninety-Eight, and you'll know why we call it "Classic."

SEE YOUR NEAREST OLDSMOBILE DEALER
COTTAGE GROVE MOTOR CO. — Phone 771 — 112 N. Ninth Street

Why Choose Between QUALITY and ECONOMY?



GET BOTH HERE!

| | | |
|-----------------------|---------------------------|--------|
| KARO TABLE SYRUP | 12 oz. bottle | 15c |
| PILLSBURY PANCAKE | 2 1/2-lb. pkg. | 35c |
| WHITE STAR TUNA | Chunk Style No. 1/2 | 29c |
| DRIFTED SNOW FLOUR | Two Bowls with 25 lb. bag | \$2.19 |
| ELASTIC LIQUID STARCH | Quart | 19c |

Serve your family the tastiest foods—and save yourself a pretty penny in the bargain—by doing all your food buying at WOLFARD'S where quality and economy go hand in hand. Our shelves and tables are filled with the famous brands you prefer for good-tasting goodness—the brands that are America's "buy-words" for quality. And because we make every penny a low price every day, you save money all along your food order. Quality-wise and economy-wise—these are your best food buys.

Farm-Fresh Produce

SWEET POTATOES or YAMS
2 lbs. 25c

Spitzenberg APPLES
3 lbs. 25c

GRAPEFRUIT
100 Size 10 for 49c

SAVE 10¢
on your next package of NUCOA
See coupon on back of carton.

NUCOA because it's ALL NUTRITION
One lb. package 22¢ lb. with coupon

BEST FOODS MAYONNAISE

Pints 39¢ Quarts 65¢

SNOWDRIFT The Big 3 lb. can 79¢

Kelly's Market

BARGAINS IN PORK

| | | | |
|-----------------------|----------------|-----|-----|
| Center Cut Pork Chops | Very Lean | lb. | 69c |
| End Cut Pork Chops | Young Pork | lb. | 57c |
| Shoulder Pork Roasts | Not Wasty | lb. | 49c |
| Shoulder Pork Steak | Very Lean | lb. | 59c |
| Sliced Bacon | Swift's Oriole | lb. | 59c |
| Bacon Ends and Pieces | Swift's | lb. | 19c |
| Home-Made Corned Beef | Mild Cure | lb. | 69c |

WHITE KING Granulated — Giant Size 59c

WATER SOFTENER Giant package 49c

NALLEY'S TANG

Pints 29¢ Quarts 45¢

NALLEY'S CHILI CON CARNE
15 oz. tins 29¢

NALLEY'S BEEF STEW
Big 30-oz. tin 69¢

Order Your **THANKSGIVING TURKEY** NOW

You'll Like Our Way

WOLFARD'S

YOUR FRIENDLY FOOD STORE

637 MAIN ST. COTTAGE GROVE PHONE 53

Low Prices Every Day