

**Weisfield's**  
ANNUAL  
MONEY-SAVING

**NOVEMBER**

**VALUE FEATURES**

**USE WEISFIELD'S LOW EASY CREDIT TERMS**

**Values to 2.95**

**Star Billing!**

**PINS AND EARRINGS**

Perfectly cast for the leading wardrobe role!

Brilliant and the lustrous polish of simulated pearls blaze like a first night marquee. Versatile gold and silver finished settings.

**\$100**

**No Money Down JUST CHARGE IT**



**NOW! at Weisfield's**  
**STAINLESS STEELWARE**

with **LIFETIME GUARANTEE**

**WILL NOT TARNISH**

**WILL NOT WEAR OFF**

**WILL NOT CORRODE**

**WILL NOT STAIN**

**WILL NOT PEEL**

**WILL NOT RUST**

**WILL NOT CHIP**

**COMPLETE SERVICE**

**FOR 6**

**Reg. 11.95**

**5.95**

**NO MONEY DOWN ONLY 25c A WEEK**

**24-PC. SET**

**INCLUDES:**

- 6 KNIVES
- 6 FORKS
- 6 TEASPOONS
- 6 SOUP SPOONS

Imagine... a lifetime of table beauty at a low cost! The "Fashion" pattern has been painstakingly created and polished to shining beauty. International Silver recognized the housewives' needs, manufactured it of solid, practically indestructible stainless steel with gleaming mirror finish. Wonderful extra set for the kitchen, cabin, camping.

Regular 69.95

**ROYAL VACUUM CLEANER**

ONLY

**49.95**

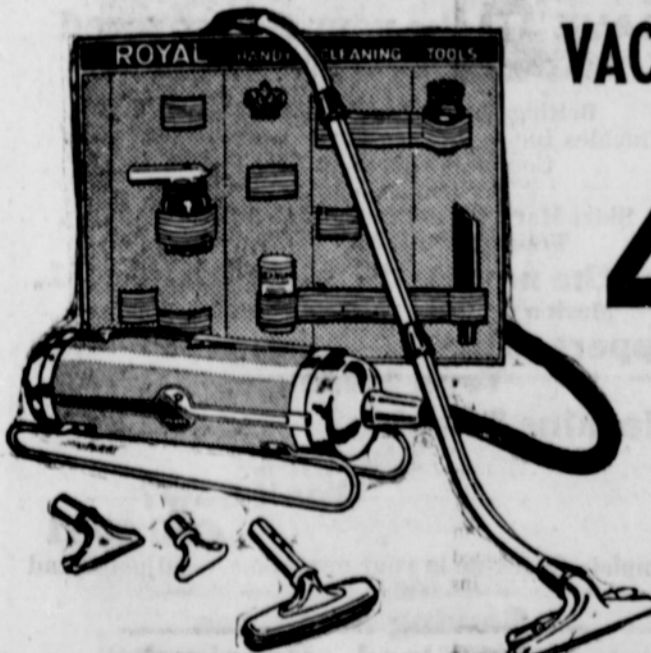
**NO MONEY DOWN \$1.00 Weekly**

With all the handy attachments

**A HANDY PAL In Any HOME**

Here is a new vacuum cleaner for streamlined service throughout the house. Each accessory performs with equally high suction and quiet, smooth-running parts to clean every nook and cranny. Air-tight connections; toe switch.

**ADD TO YOUR ACCOUNT**



**Open Friday Till 9 P. M.**



**WEISFIELD'S**  
THE NORTHWEST'S LARGEST  
**CREDIT Jewelers**

**881 Willamette, Eugene**

**Prices Are Steady For Sawlogs**

Demand for Douglas fir sawlogs was good at steady prices in the Willamette Valley last week.

Other forest products were generally unchanged in a dull market.

**SAWLOGS:** Valley mills paid \$38 to \$47 a thousand, mostly \$40 to \$42, for second-growth Douglas fir sawlogs. No. 3's were \$31 and \$38. Camprun logs ranged from \$35 to \$42, mostly around \$40. Mixed second and old-growth logs sold up to \$45 a thousand. Eight-foot logs down to 6 inch diameter were in good demand at \$16 to \$18 a cord or \$36 to \$38 a thousand. Mills in the foothills paid down to \$14 a cord, or \$30 a thousand.

**Old-growth sawlogs** ranged from \$35 to \$65 a thousand. Peeler logs in the northern valley sold in a \$15 price range under ceilings of \$80, \$100, and \$110. Lane county prices were \$75, \$85, and \$100. A few mills paid \$25 to \$37.50 for hemlock, white fir, cedar, and pine.

**POLES AND PILING:** Demand was fair for poles 55 feet and over. Shorter poles were taken at some yards. 55-foot poles ranged from 28 to 34 cents a lineal foot, depending on diameter. A few pole yards bought car stakes at 40 to 50 cents each.

**PULPWOOD:** Pulpwood demand was limited. Unpeeled hemlock, spruce, and true firs were \$17 a cord. Unpeeled Douglas fir was \$15.

**HARDWOODS:** Alder, ash and maple brought \$32.50 to \$34 a thousand in the Portland area. Alder was in good demand at Lebanon at \$35.

**OTHER FOREST PRODUCTS:** Demand for maple burls and cluster logs exceeded the supply in Portland at 5 1/2 to 6 1/2 cents a pound for burls and \$80 a ton for clusters. Black walnut logs were in good demand at \$60 to \$70 a ton.

This report, based on information supplied by the State Board of Forestry, was prepared by F. H. Dahl, extension agricultural economist.

**Too Late to Classify**

**ONE ROOM** cabin for rent, partly furnished. 1 1/2 miles East of city. One person only. Inquire Sadie Alleman. Rte. 1, Box 30. 13-1tc

**FOR RENT:** 3-room cabin. 1050 E. Main. 13-1tp

**LOST:** TWO hounds in Delight Valley and Bear Creek vicinity. One medium size white with lots of blue specks, one smaller white with big black spots, red head and ears. Phone 445Y. 13-1tc

**FOR SALE:** 3-bedroom home, fairly new, built-in kitchen, electric water heater, utility room, attached garage and woodshed. Lot 90x97 feet. A very comfortable home, close to high school. This nice home selling for \$5500 with \$800 down and Bal. by month. \$5250 cash takes this place. Find out about this at Andrews-Hill Real Estate. Of course, the home of bargains. 709 Main St. or phone 100. 13-1tp

**FOR RENT:** 3-room furnished apt., automatic water heater, refrigerator, private bath, garage. 1133 Adams. 13-2tp-14

**FOR SALE:** 1952 Mercury, 4-dr. sedan, light gray, less than 700 miles, radio, heater, seat covers, W.S.W. tires. Perfect condition. Can be seen at 323 No. G. St. days. 13-2tp-14

**WE WISH** to express our most heartfelt thanks to all those who helped so much in the time of our recent sorrow with their wonderful cards, floral offerings and other expressions of sympathy. We are especially grateful to Ida, Leonard and Lester, Mother and Dad Graham and Bill and Lillian Norris, Jackie and Roy Graham, Gene and Paul Burns and Eddie and Don Graham. 13-1tp

**WE WISH** to thank the Loyal Order of Moose, Women of the Moose, Local Union 2627, E. V. McCoy Lumber Co. and our many friends and neighbors who extended comforting sympathy and help in our recent sorrow. For the beautiful service and floral offerings we are deeply grateful. Mrs. Arthur J. Polette, Chester A. Polette, Shirley Casavoy, Mrs. Ralph Spain, Wilfred, Lindsay and Elmer Polette. 13-1tp

**ANYONE** interested in viewing Fashion Frocks call 344J2. No obligation. 13-1tc

**FOR SALE:** Live hens. 11 for \$10.00. Hemenway Poultry Farm. Ph. 323J2. 13-3tc-15

**FOR SALE:** 8 months old locker beef. Phone 33F2, Cottage Grove. 13-1tp

Our heartfelt thanks to all who extended comforting sympathy and help in our recent sorrow. For the beautiful service, floral offerings, and other kindnesses we are deeply grateful. Jackie Tyrrell and girls, Mr. and Mrs. J. E. Tyrrell and family. 13-1tp

Voluntary contributions from Americans through the Crusade for Freedom support Radio Free Europe and Radio Free Asia.

**Coast Guard Academy Exams Set for Feb.**

Admiral N. H. Leslie, Commander 13th Coast Guard district, has announced that entrance examinations for the Coast Guard Academy will be held February 24 and 25, 1953.

In the state of Washington the exams will be held in Spokane, Yakima, and Seattle; in Oregon at Eugene, La Grande and Portland; in Montana at Billings and Great Falls; in Idaho at Boise and Pocatello, and in Alaska at Ketchikan.

There are no Congressional appointments or geographical quotas. The examinations are strictly competitive. Qualified military personnel as well as civilians may take the exam.

To be eligible, a man must be between the ages of 17 and 22, a high school senior or graduate, and must have completed 15 units by June 30, 1953. Among the 15 units must be three of English, two of algebra, and one each of plane geometry and physics.

**BIRTHS**

**Cottage Grove Hospital**  
**CLARK** — To Mr. and Mrs. Edmund Elbert Clark, Drain, a son, David Bruce, November 6, 1952.

**FAULKNER** — To Mr. and Mrs. William Lewis Faulkner, Cottage Grove, a daughter, Linda Sue, November 7, 1952.

**GATES** — To Mr. and Mrs. Lester Earl Gates, Cottage Grove, a son, Franklin Dale, November 8, 1952.

**GUGGISBERG** — To Mr. and Mrs. John W. Guggisberg, Cottage Grove, a daughter, Kathy Louise, November 9, 1952.

**REDDING** — To Mr. and Mrs. Frank Arlando Redding, Creswell, a son, Michael Arlando, November 10, 1952.

**KEYS** — To Mr. and Mrs. Charles Frank Keys, Cottage Grove, a daughter, Crystal Roseanne, November 10, 1952.

**BIGELOW** — To Mr. and Mrs. Francis Marion Bigelow, Drain, a daughter, Roberta Lynn, November 10, 1952.

**RASOR** — To Mr. and Mrs. Jean Francis Rasor, Cottage Grove, a daughter, November 10, 1952.

**WRIGHT** — To Mr. and Mrs. Franklin Delano Wright, Creswell, a daughter, November 11, 1952.

**BRAATEN** — To Mr. and Mrs. Fred Norman Braaten, Drain, a daughter, Margaret Ann, November 11, 1952.

**Sacred Heart Hospital**  
**AMSTUTZ** — To Mr. and Mrs. Jake Amstutz, Cottage Grove, a son, October 31, 1952.

**Rhoads Clinic and Hospital**  
**MARTIN** — To Mr. and Mrs. Melvin A. Martin, Creswell, a daughter, November 4, 1952.

Remember — Knowledge plus caution equals safety.

Americans who contribute to the Crusade for Freedom may sign their names and addresses to messages of greeting and encouragement in the language of the satellite nations of Central Europe, and in Mandarin and Cantonese Chinese for Asia.

**Hospital Patients**

Visiting hours at the Cottage Grove Hospital are as follows:  
\*Maternity patients: 2:30 to 3:30 p.m.  
Evening hours for both departments are from 7 to 9:30 p.m.  
Medical and surgery patients: 2 to 3 p.m.

Patients other than maternity entering Cottage Grove hospital between November 6 and 12 were: Rufus Martin, Frank Plueard, Glen Smith, Ora Ann Summers, Mary Jo Albin, Clarence B. Sears, Mollie Bishop, Agnes Miller, Marvin Faulkner, Jimmy Brown and Ida Metzler, all of Cottage Grove; Juanita Simmons and Lulu Bell McDonald, Drain; Reta L. Chapman, Dorena; Pauline Moore, Elkton; Bennie Cook, Disston; Edwin Oibekson, Creswell and Ethel McAlfee, Yoncalla.

**WEST EUROPE FARM CROPS INCREASE WITH U. S. AID**

Agricultural production in Western Europe has increased more than 30 percent since the beginning of the Marshall Plan, according to a Mutual Security Agency report last month. The present level is 12 percent higher than before the war. The report pointed out, however, owing to an increase in population and the influx of refugees from the East, consumption per person of farm products has not yet reached pre-war levels.

Stressing that rearmament means expanding armed forces and greater numbers employed in industry, the report noted that this implies higher than average food consumption, adding to the already difficult problem of maintaining the normal needs of the still expanding population. And the report warned:

Unless food supplies are increased, the resulting shortages and inflated prices will seriously hamper the fulfillment of security goals.

**Nelson Electric Delays Expansion Program Until Results of General Election are Known**

**LUMBER, CAR MISHAPS INJURE SEVERAL MEN**

Two local men were injured this week in lumber accidents, and a Creswell man was hurt in an auto wreck.

Robert Raymond of Culp Creek, an employee of Lillegrén Logging, received injuries to his left foot and ankle November 10 when they were caught between two logs. He was treated at Cottage Grove hospital.

Also given treatment on the 10th was Howard C. Cox of Cottage Grove, an employee of Rickini Lumber Co. He received a puncture wound in his left hand from a piece of cable.

George Poken of Creswell received head lacerations November 8 after being involved in an accident near Anlauf and was treated at the hospital.

More Freedom stations in Europe and Asia to fight the Big Lie with the Big Truth are planned by Radio Free Europe and Radio Free Asia.

The Nelson Electric opened a branch office in Riddle, Douglas county Monday, according to Ray Nelson. The expansion move was delayed pending the outcome of the general election, Nelson said. The Riddle office will employ two men. Decision to establish a branch office in the Douglas county town was probably influenced by the purchase of Nickel Mountain, near Riddle by the Hanna Development Corporation. Extensive plans are being made by this concern to develop nickel, which has been in short supply over the United States for sometime.

The open pit method will be used by the Hanna Development Corporation to extract nickel in this area.

Some good can come from an election aside from electing a new president as evidenced by both Nelson and Hanna Corp., holding off until results of the election were determined. Riddle may profit from an extensive development which will soon be underway there.

Learn to labour and to wait. —Longfellow

Office Safes—The Sentinel

**BRING YOUR BATHROOM UP-TO-DATE.**

Let us help you plan your rebuilding or remodeling.

**Cottage Grove Construction Co.**  
Carl J. Rich, Jr.

Contracting, Building and Designing  
Ph. 232L 24 So. Tenth



**Now Is the TIME!**

for **YOUR PHOTOGRAPH**

**Don't wait til the night before Christmas!**

We'll have your Photograph ready for Christmas delivery! Your photograph will make a lovely gift for someone you love and can't get to see for Christmas... a gift sure to be welcome—call for an appointment now!



**MAKE AN APPOINTMENT TODAY!**



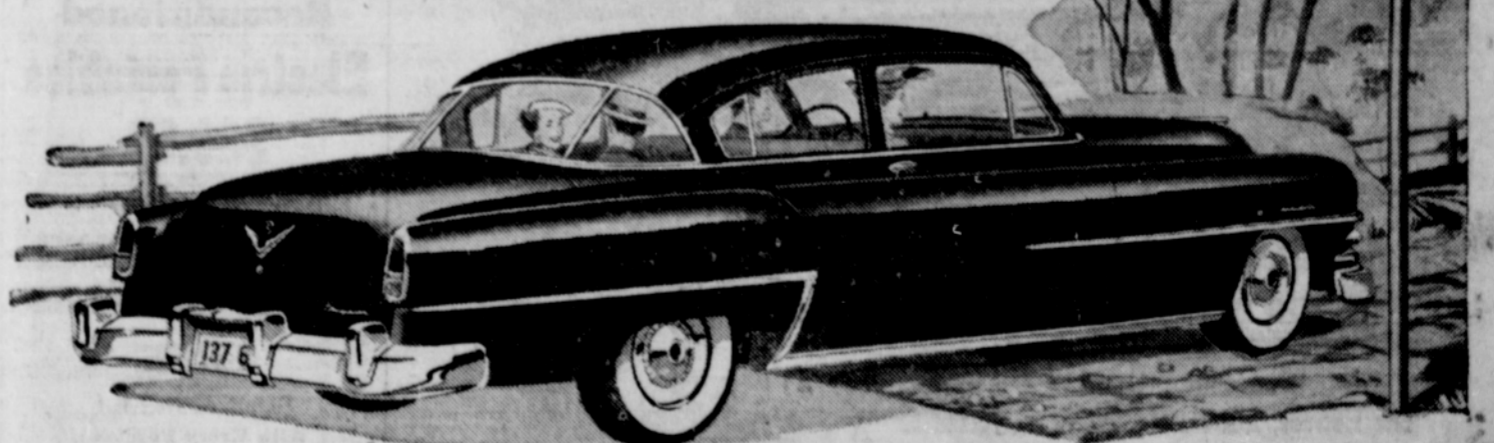
Christmas specials on now — Use our lay away plan. Double Green Stamps during November only.

**CLARK'S STUDIO**

6th Street Building

Phone 319

**YOU GET THE ONLY FULL-TIME POWER STEERING**



**IT WORKS FULL-TIME!**... unlike some other types of power steering which aren't effective till you exert up to 7 lbs. pressure on the steering wheel!

You enjoy complete control of your car at all times... with far less fatigue!

**IT'S EASIER!**... 85% of the steering effort is taken off your hands—substantially more than with any other type of power steering. Even with car at a standstill, you can turn wheel with one finger... a real boon in traffic, on hard-to-negotiate driveways or when parking!

**IT'S SAFER!**... on rough roads, soft shoulders, or in case of a blow-out! Hydraulic power helps you turn... and keep a true, steady course with a constant, predictable "feel" to the wheel.

**In the most beautiful CHRYSLERS ever designed!**

AMERICA'S FIRST FAMILY OF FINE CARS • WINDSOR • NEW YORKER • IMPERIAL

**McCOY MOTORS - 6th and WASHINGTON**

See them... drive them... judge them... at your Chrysler-Plymouth dealer's!