

# Plans for 1950 South Lane Fair Are in Progress

A meeting of the South Lane Fair Board was held on Tuesday to further plans for the 1950 fair and work on the revised premium listings.

It was planned to include an addition in the agricultural exhibits by having a class for General Farm Displays. Displays will be made in somewhat the manner of a miniature Grange booth, with three placings for cash awards. These will be judged on arrangement and display, variety, quality and utility.

Final premium listings were approved and handbills with all entries listed will be printed and ready for distribution at an early date. In this way it is hoped that exhibitors will become familiar with possible entries and plan accordingly in advance.

Outside and inside space will be available for commercial booths. This will be rented by front footage with a minimum of ten feet for outside space at the sidewalk and eight feet inside Armory space. Particulars and arrangements for space may be made by contacting the Chamber of Commerce office. Dorena Grange will have the food concession in the Armory this year.

The board wishes to particularly bring to the attention of exhibitors that there will be no livestock entries this year. This is due to the fact that there is no suitable exhibition space available near the armory. All livestock entries may be made at the County Fair, which will be held the week following the South Lane Fair.

# Cottage Grove Sentinel

COTTAGE GROVE, LANE COUNTY, OREGON THURSDAY, JULY 13, 1950 NUMBER 49

## Directors of C. G. Riding Club



Courtesy Clark's Studio

**BOARD OF DIRECTORS**—Standing (Left to Right): J. B. Leonard, Paul Miller, Larry Levens, Mike VanderKley, Chet Purdy. Kneeling: Stub Mosby, Louis Caldwell, president, Jim Abbott, Garret Lyon.

## Roads to Bohemia Mine District Open; Mining Resumed at Champion

The road to the Bohemia mining district is opened according to word brought in by Tom Parker, mayor of Lundpark yesterday. In fact the loop roads are open, which will enable truckers and others to go up the Brice creek road and return down the Sharp's creek road or vice versa. The roads are rough but passable according to Mr. Parker. Before the roads could be traveled, the forest service did quite a bit of work removing trees that had fallen across the roadway during the storms this winter and making repairs on the west end of the Brice creek road.

It was also understood that the Champion mine had been leased to Kenneth Watkins by the Bartels interests and that Mr. Watkins had 21 men at the mine preparatory to starting operations. Mr. Watkins is also doing assessment work on some claims nearby.

## S. P. Streamliner Begins Run Aug. 13

Southern Pacific's completely streamlined Cascade, operating over the company's Shasta Route between Portland and San Francisco Bay cities, will be inaugurated August 13, on a new fast schedule, J. H. Pruett, Jr., general passenger agent, announced yesterday.

The new diesel-powered, 13-car, all-Pullman streamliner will make its 718-mile run in 16½ hours, cutting two hours off the schedule of the present Cascade train, Pruett said.

Southbound the new Cascade will leave Portland at 4:45 p.m. (PST), five minutes earlier than now, and arrive Oakland Pier at 8:37 a.m. and San Francisco at 9:15 a.m. instead of 11:20 a.m. Northbound it will depart from San Francisco at 5 p.m., as at present, arriving Portland at 9:30 a.m. instead of 11:30 a.m. as at present.

Wisdom is the right use of knowledge. To know is not to be wise. . . . But to know how to use knowledge is to have wisdom. —Spurgeon.

Salesbooks — The Sentinel.

## State's Population Set at 1,511,188

Oregon apparently qualified to gain another congressman Monday as preliminary census reports placed the state's population at 1,511,188.

That was a gain of 421,504—nearly 39 per cent more than the 1940 total of 1,089,684.

At present, representatives are allotted states for each approximate 300,000 population. Oregon now has four representatives.

Douglas County, boomed by lumber, led the increase, more than doubling its population in the last ten years. It grew from 25,728 to 54,064.

Here is how Oregon counties with ten years ago:

1940	1950
Multnomah . . . . .	355,099 468,571
Lane . . . . .	69,096 124,948
Marion . . . . .	75,246 100,379
Clackamas . . . . .	57,130 86,574
Washington . . . . .	39,194 61,221
Jackson . . . . .	36,213 57,831
Douglas . . . . .	25,728 54,064
Linn . . . . .	30,485 53,623
Klamath . . . . .	40,497 42,014
Coos . . . . .	32,466 41,588
Umatilla . . . . .	26,030 41,176
Yamhill . . . . .	26,336 33,410
Benton . . . . .	18,629 31,524
Clatsop . . . . .	24,697 30,571
Josephine . . . . .	16,301 26,313
Polk . . . . .	19,989 26,184
Malheur . . . . .	19,767 23,136
Columbia . . . . .	20,971 22,725
Deschutes . . . . .	18,631 21,692
Lincoln . . . . .	14,549 21,180
Tillamook . . . . .	12,263 18,536
Union . . . . .	17,399 17,898
Baker . . . . .	18,297 16,067
Wasco . . . . .	14,069 15,511
Hood River . . . . .	11,580 12,761
Crook . . . . .	5,533 8,923
Grant . . . . .	6,380 8,275
Wallowa . . . . .	7,623 7,212
Lake . . . . .	6,293 6,637
Harney . . . . .	5,374 6,078
Curry . . . . .	4,301 5,997
Jefferson . . . . .	2,042 5,505
Morrow . . . . .	4,337 4,739
Wheeler . . . . .	2,974 3,288
Gilliam . . . . .	2,844 2,807
Sherman . . . . .	2,321 2,260
Totals . . . . .	1,089,684 1,511,188

## SPEAKER SAYS GAIN IN POPULATION TOO FAST

OREGON STATE COLLEGE — People in this state should not fret when census figures fail to come up to inflated ideas, believes E. B. MacNaughton, president of the First National bank of Portland. He says that for most of the time since the early 1900s, people have come to Oregon faster than they could be properly absorbed.

MacNaughton expressed his opinions in an address before the second annual Institute of Northwest Resources held in connection with the summer school. About 80 per cent of Oregon's resources come from the farms and the forests, and these industries can absorb just so many people, he pointed out.

He advocated more industries to turn Oregon's raw products into finished form. The state produces great wealth but too much of it is being shipped in box cars in the raw state, he declared.

## U. of O. Gets Fund For Polio Research

Oregon's first research project to be financed by a grant from the National Foundation for Infantile Paralysis will get underway Saturday.

The grant, amounting to \$5,275.00, was part of \$1,441,721.00 in awards which National Foundation president Basil O'Connor designated last week for scientific research and professional education in the unceasing battle against polio.

Officials of the University of Oregon medical school where Oregon's grant will be used, were enthusiastic over O'Connor's announcement. They pointed out that it represented national recognition of the school's virus research project and that continued progress would entitle the school to a renewal of the grant each year.

Research made possible by the Oregon grant will be under the direction of Dr. Arthur W. Frisch, associate professor of bacteriology who has been engaged in virus research at Portland for three years. Dr. Frisch and his immediate superior, Dr. H. J. Sears, said that \$3200 of the sum would be expended for the salary of a technician and the balance for equipment, white mice and monkeys.

He who is taught to live upon little owes more to his father's wisdom than he who has a great deal left him does to his father's care. —William Penn.

Men give counsel; but they give not the wisdom to profit by it. To ask wisdom of God, is the beginning of wisdom. Mary Baker Eddy

**PLEASES WITH PERFECT RESULTS EVERY TIME**

**M.C.P. Jam & Jelly PECTIN**

MORE FOR YOUR MONEY

## Planning on Canning?

**Buy These MONEY SAVING Supplies Now!**

Kerr or Ball

**Mason Jars**

Pints — Reg. Doz. **89c**

Quarts — Reg. Doz. **\$1.05**

Quarts — W. Mouth Doz. **\$1.25**

Save all you can on canning supplies by coming to SWARTZ & WOLFARD'S for everything you need for "putting up" those delicious home preserves that are a source of great pride to you . . . and of mealtime pleasure for your family. We've everything from jars and rings to the finest of the freshest fruits, berries and vegetables — and everything is priced real low.

## SALE of CANNING NEEDS

**Bernardin Lids** Doz. **11c**

**Bernardin Caps** Doz. **25c**

**M. C. P. Pectin** 2 for **25c**

**Sure-Jell Pectin** 2 for **25c**

**Certo** 2 for **45c**

**Freezer Cartons**

**Pint Pails** Doz. **39c**

**Rubber Jar Rings** Reg. Size 3 doz. **15c**

**Amazo White Syrup** 5 lb. glass **49c**

**Vinegar** Patty Dae Qt. **19c**

**Parawax** lb. **23c**

**Shaker Salt** 2 for **19c**

**Self-Service Produce**

**Fresh Tomatoes** lb. **29c**

**Cucumbers** 2 lbs. **19c**

**Lettuce** lb. **8c**

**U. S. No. 1 Potatoes** 25 lbs. **\$1.19**

**Ripe Canteloupes** 2 for **29c**



**See You at the Rodeo**

**Kellogg's CORN POPS** 2 pkgs. **17c**

WE'RE BRAGGING ABOUT GREAT NEW CEREAL WITH THE SWEETENIN' ALREADY ON IT!

**Quality Meats**

**Rib Steaks** Grade A **79c lb.**

**Short Ribs** Lean and Meaty **39c lb.**

**Quality Franks** **35c lb.**

**Fresh Fryers and Rabbits**

**"KELLY'S MARKET"**

The Best in Meats

**Nucoa . . . lb. 31c**

**Best Foods Mayonnaise** Pint **45c**

**DELICIOUS AS A SOUP AS A SAUCE AS AN INGREDIENT**

**Campbell's Tomato Soup** 3 for **33c**

**Otterbrook Green Beans** 2 for **29c**

**Summertime Whole Kernel Corn** 3 for **29c**

**Smith's "Picnic Tins" Garden Peas** 3 for **25c**

**KEN-L-RATION** 2 for **29c**

FIRST IN CANNED DOG FOOD

**Hunts 24 oz. Sweet Pickles . . 49c**

**Hunts 24 oz. Dill Pickles 35c**

**Nalleys Pint Cut Sweets 29c**

**Happyvale Catsup . . 15c**

**Van Camps 290 Pork & Beans 2 for 29c**

**2 DISHCLOTHS GENUINE MORGAN**

Send part of label or paper disc from metal cap, and your name and address to: Stanley, Box 1081, Dept. D.W., Decatur, Ill.

**Sta-Flo LIQUID STARCH** 25c



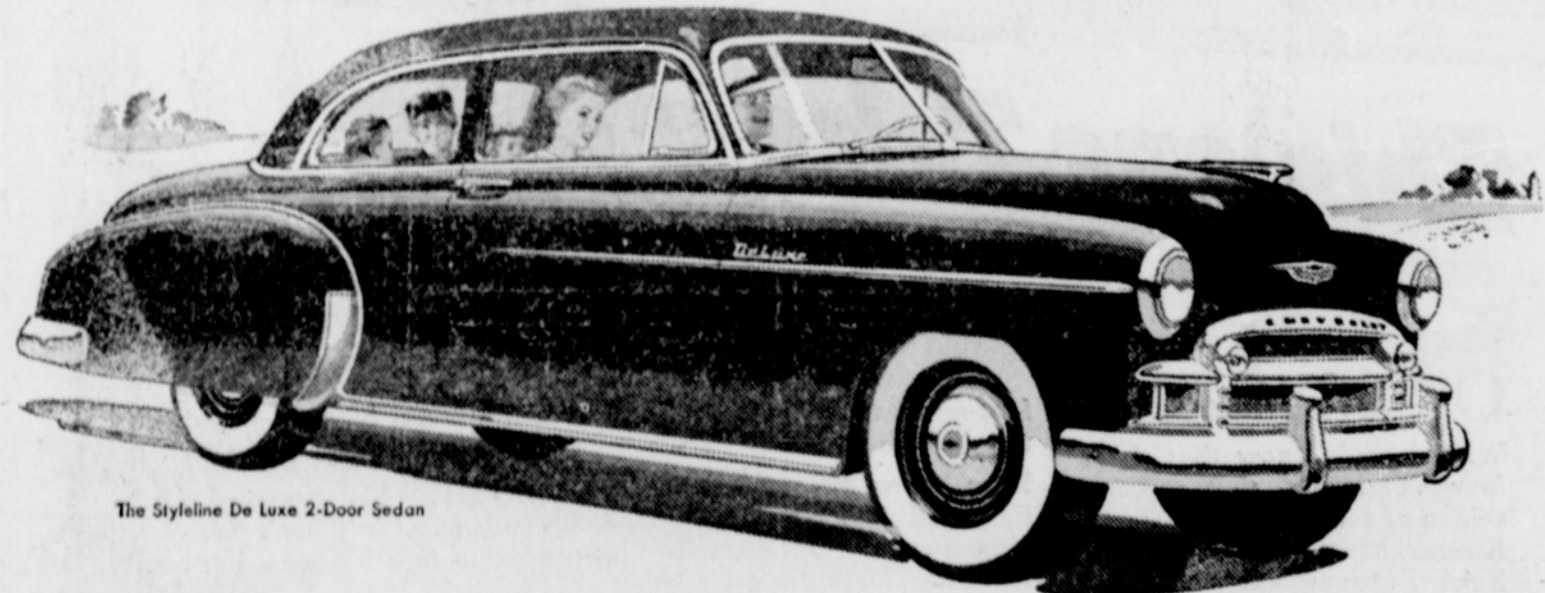
**This Ad Effective Thurs., Fri., and Sat., July 13, 14, 15**

**FREE Delivery on orders phoned in by noon Tuesdays and Fridays.**

**SWARTZ AND WOLFARD FRIENDLY FOOD SERVICE**

637 MAIN ST. COTTAGE GROVE PHONE 53

**Be sure! CAN WITH CANE** be sure with **CH cane sugar**



The Styleline De Luxe 2-Door Sedan

# Drive home the facts!

**First and Finest for thrills and thrif**

Chevrolet brings you the finest combination of thrills and thrif . . . with its new 105-h.p. Valve-in-Head Engine\*—most powerful in the entire low-price field—or its highly improved, more powerful standard Valve-in-Head Engine.

**First and Finest for all-around safety at lowest cost**

Only Chevrolet offers this five-fold protection: (1) Curved Windshield with Panoramic Visibility (2) Fisher Unisteel Body (3) Safety Plate Glass all around (4) Unified Knee-Action Ride (5) Certi-Safe Hydraulic Brakes.

**First and Finest for styling and comfort at lowest cost**

Chevrolet's Style-Star Bodies by Fisher provide extra-wide form-fitting seats—extra-generous head, leg and elbow room—extra value in every detail of styling and comfort in this longest and heaviest low-priced car!

**First and Finest for driving and riding ease at lowest cost**

Only Chevrolet offers finest no-shift driving, with Powerglide Automatic Transmission and 105-h.p. Engine\* . . . or finest standard driving, with highly improved standard Engine and Synchro-Mesh Transmission . . . at lowest cost.

**Come in—drive a Chevrolet and you'll know why it's AMERICA'S BEST SELLER . . . AMERICA'S BEST BUY!**

**CHEVROLET**

\*Combination of Powerglide Automatic Transmission and 105-h.p. Engine optional on De Luxe models at extra cost.

**COTTAGE GROVE MOTOR CO.**

112 N. 9th Phone 771